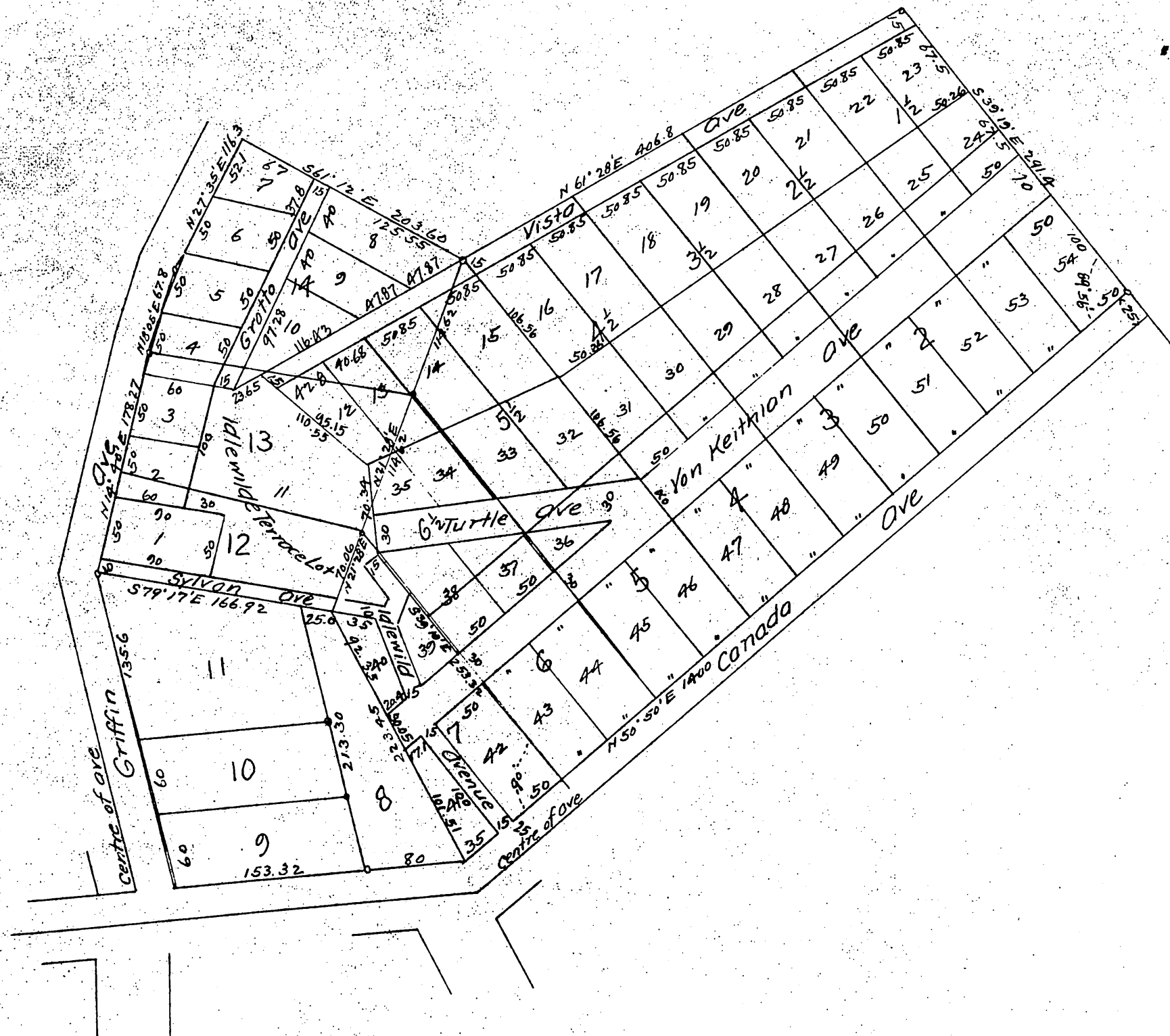


Resubdivision

of Lots 1, 2, 3, 4, 5, 6, 7, 1 1/2, 2 1/2, 3 1/2, 4 1/2, 5 1/2, 6 1/2, 12, 13, and 14, Block 7
Foot Hill Tract East Los Angeles Cal.
(of record at p 432 Book 5 miscellaneous)

Old courses and distances in red lines and figures
Surveyed May 14th 1888 C.A. Ensign Surveyor.



A full, true and correct copy of the original
(reduced to the scale of 100 feet to one inch)
recorded May 17, 1888 at 5 min past 10 A.M.
at request of J. H. Van Keith
Frank A. Gibson County Recorder.
By George Bugbee Deputy.