

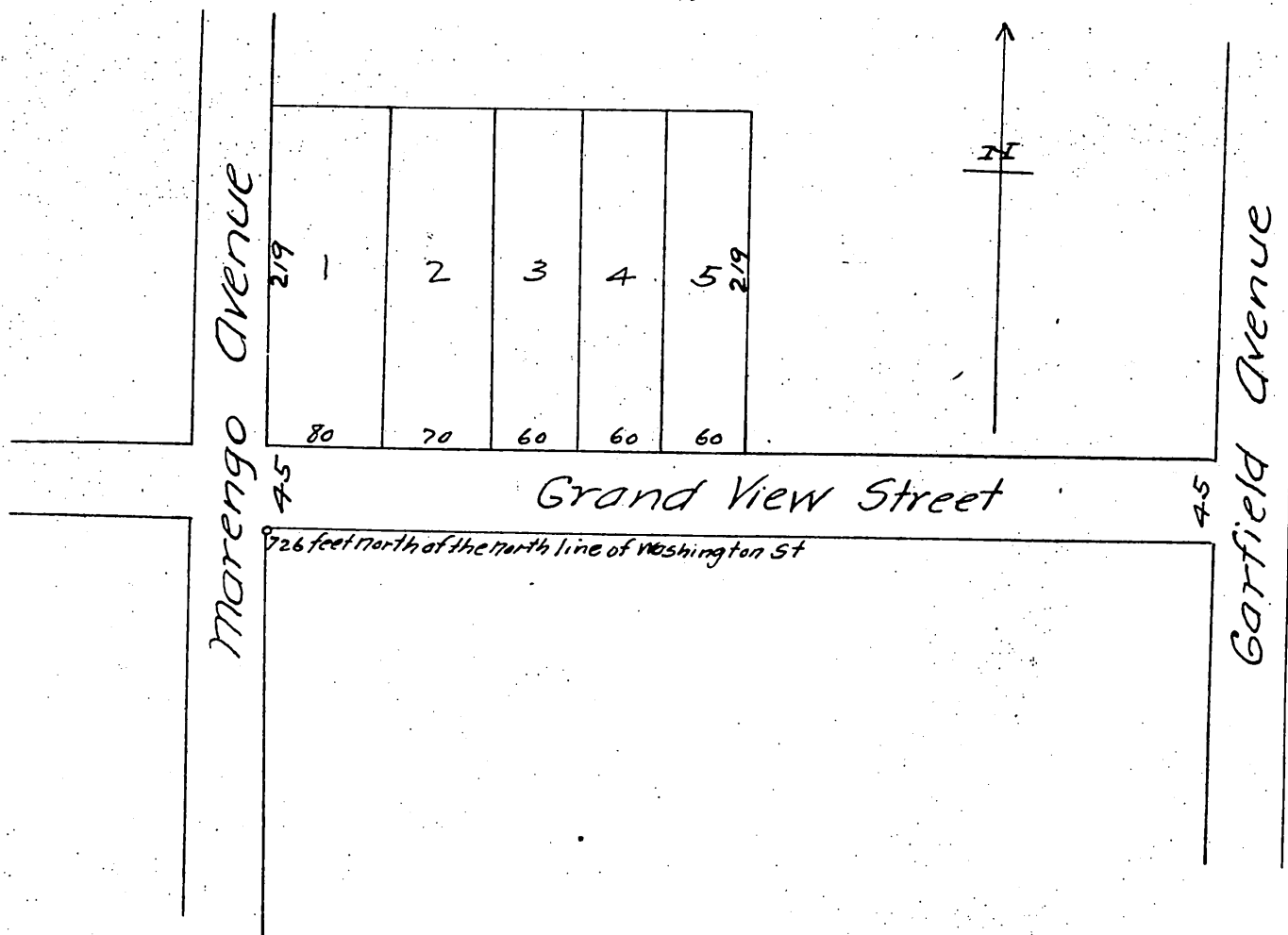
# Replot Map OF A. W. Bunker's Subdivision

of Lots Three (3) and Four (4) Block "O" Pasadena City  
Painter and Ball Tract, according to a map recorded in  
Book 4, page 557, of the Miscellaneous Records of Los  
Angeles County, State of California.

This replot map is made solely to change the line  
between lots number one (1) and two (2) of said subdivi-  
sion as shown by first map recorded in Book 22 page  
40 Miscellaneous Records of said County and State.

Surveyed March 1887 by J. M. Willard C.E.  
Resurveyed May 1888.

Scale  $\frac{1}{20}$  of an inch to the foot.



A full, true and correct copy of the original  
recorded May 18, 1888 at 20 min past 11 a.m.  
at request of A. W. Bunker.

Frank Q. Gibson County Recorder  
By George Bugbe Deputy