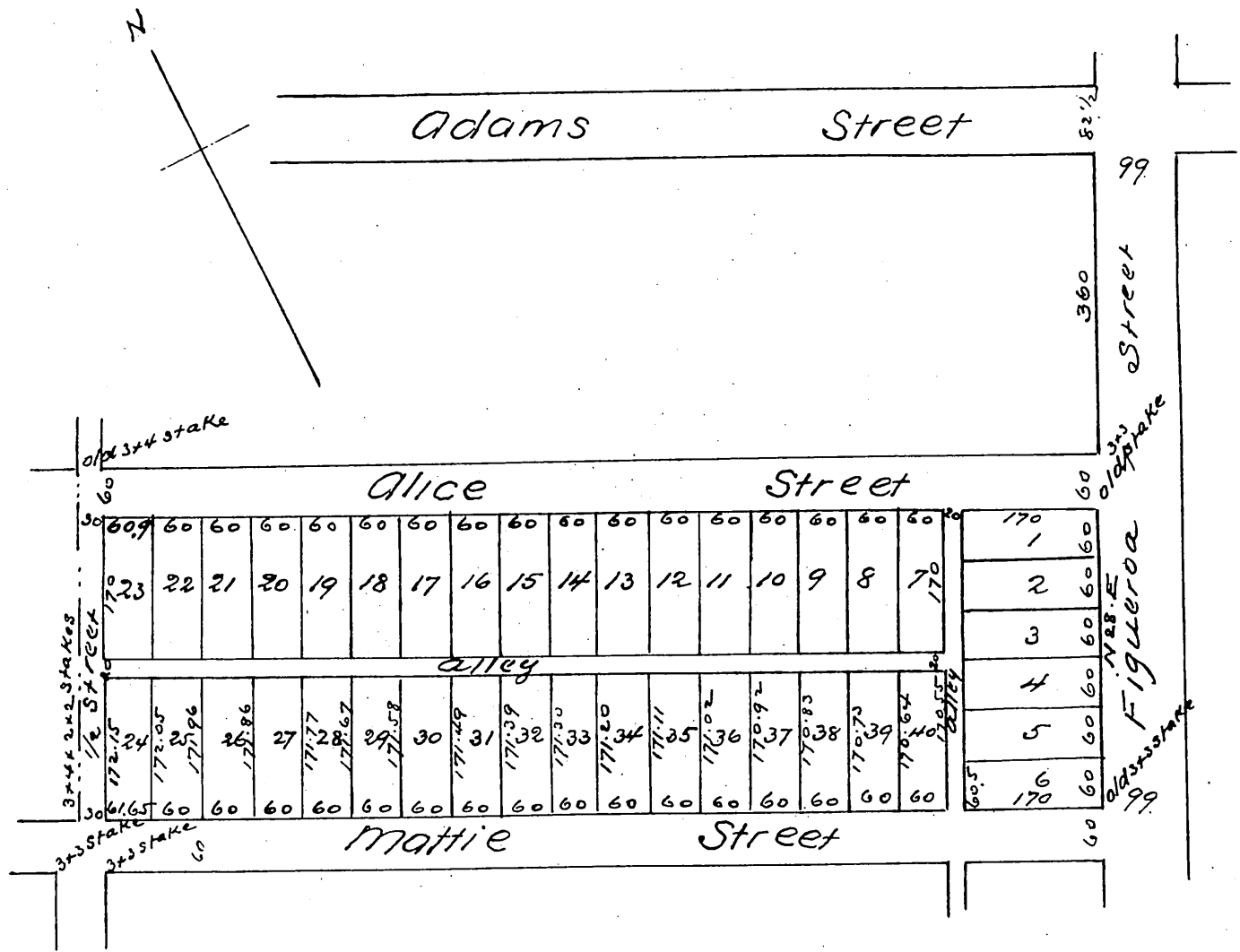


Map of Del Valle's Subdivision of part of the Wheeler Tract

Being part of Lot 1 Block 22 of Hancock's Survey of the
City of Los Angeles Cal.

Subdivided by J. A. Bernal Sur. & C.E. Sept 1887

Scale 50 ft to the inch



a full true and correct copy of the original
(reduced to the scale of 200 feet to one inch)
recorded Jan 7. 1888 at 10.26 A.M. at request
of Land T. Co.

Frank A. Gibson Co. Recorder
by Wm. E. Johnston Deputy