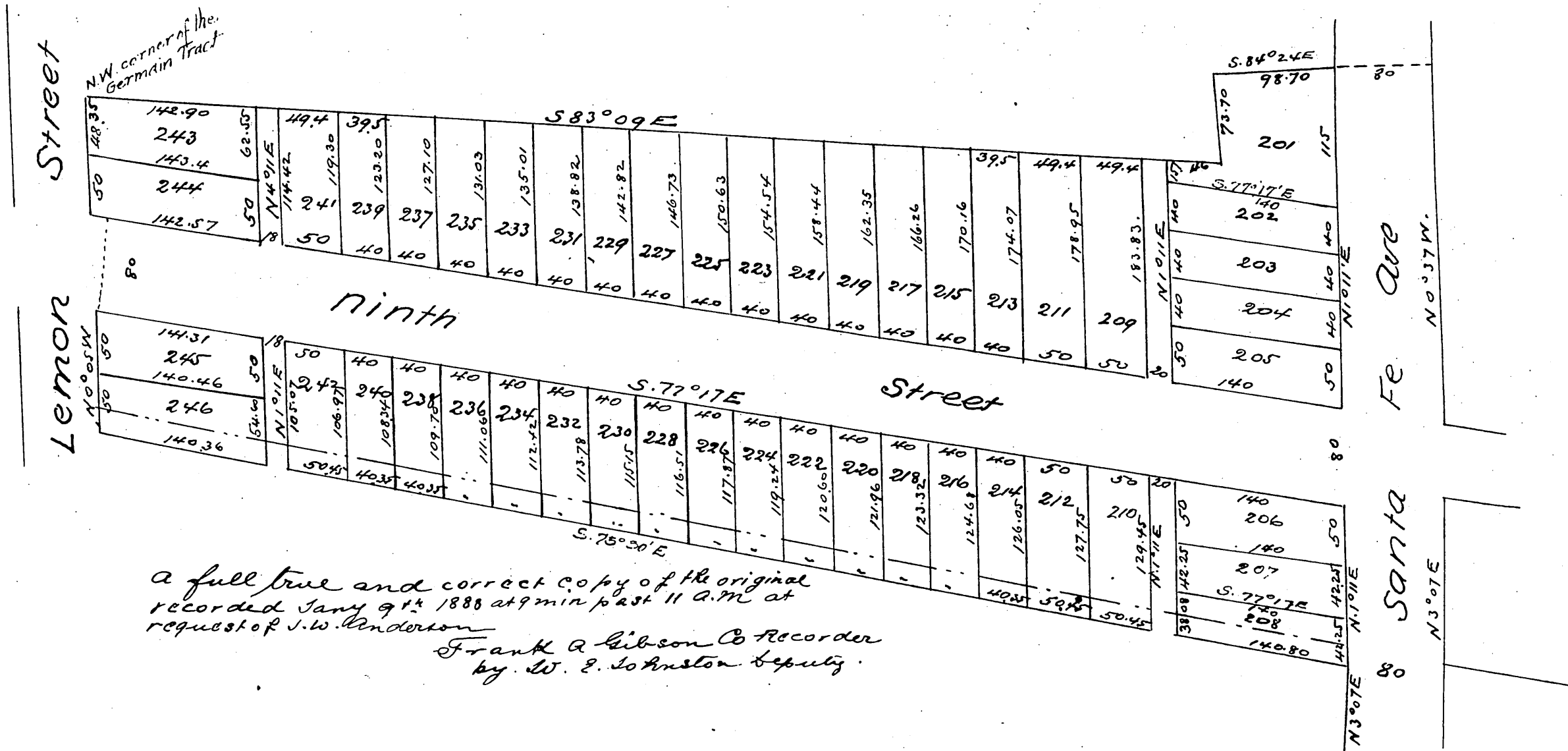


Plat
of M.L. Wick's Subdivision
of the Western portion of the Germain Tract
Also a strip of land 20 ft in width off of North side of Archibald Tract
Los Angeles City Cal
Surveyed May 1887 by L. Friel C.E.

Scale 100 to 1 inch



a full true and correct copy of the original
recorded Jan'y 9th 1888 at 9 min past 11 A.M. at
request of J.W. Henderson
Frank A. Gibson Co Recorder
by W. E. Johnston Deputy.