

43014

147

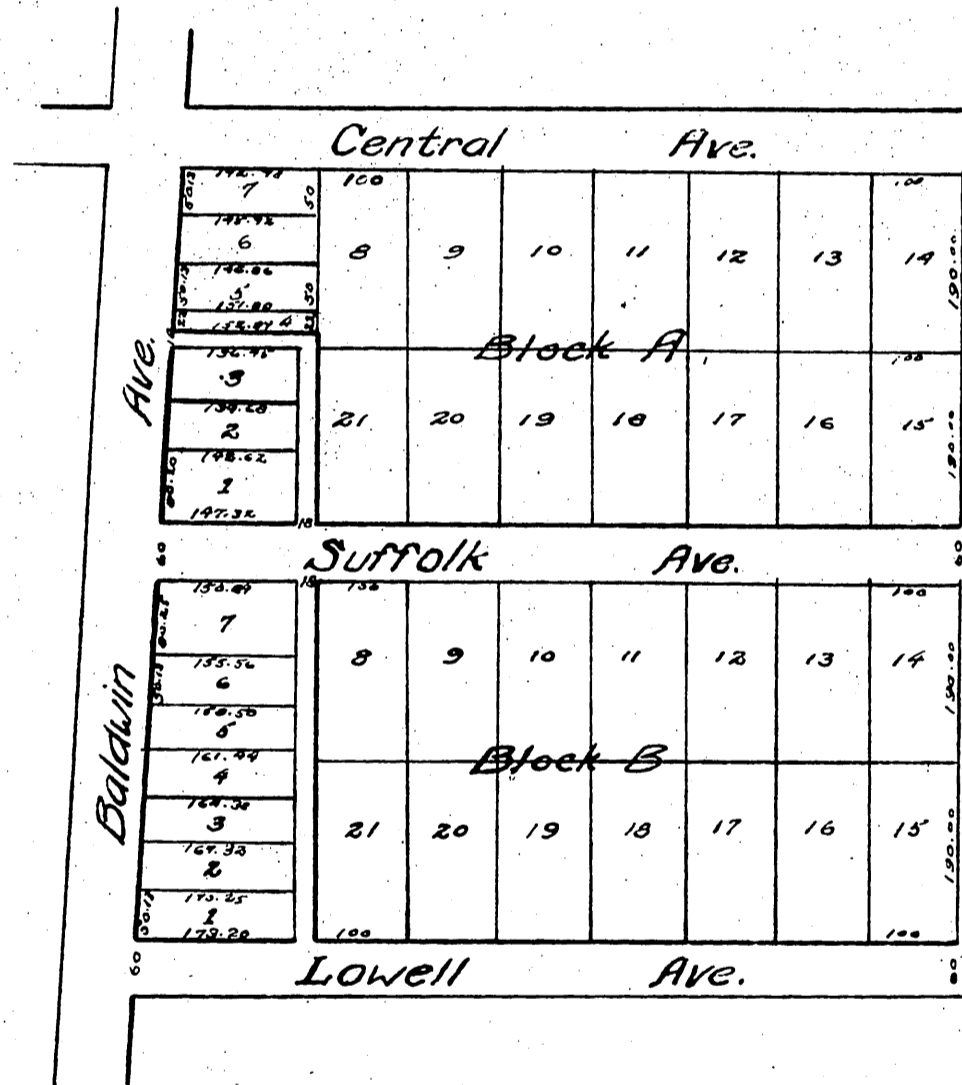
MAP of the CENTRAL TRACT

Being a Subdivision of the North West part of Lot 6.

SIERRA MADRE CAL.

J.A. Osgood Surveyor. August, 1887.

SCALE - 200' = 1"



A full true and correct copy of the original.
Recorded Jan. 11, 1888, at 11:27 A.M. at request
of N.H. Hasmer.

Frank A. Gibson, County Recorder
W. E. Johnston, Deputy.