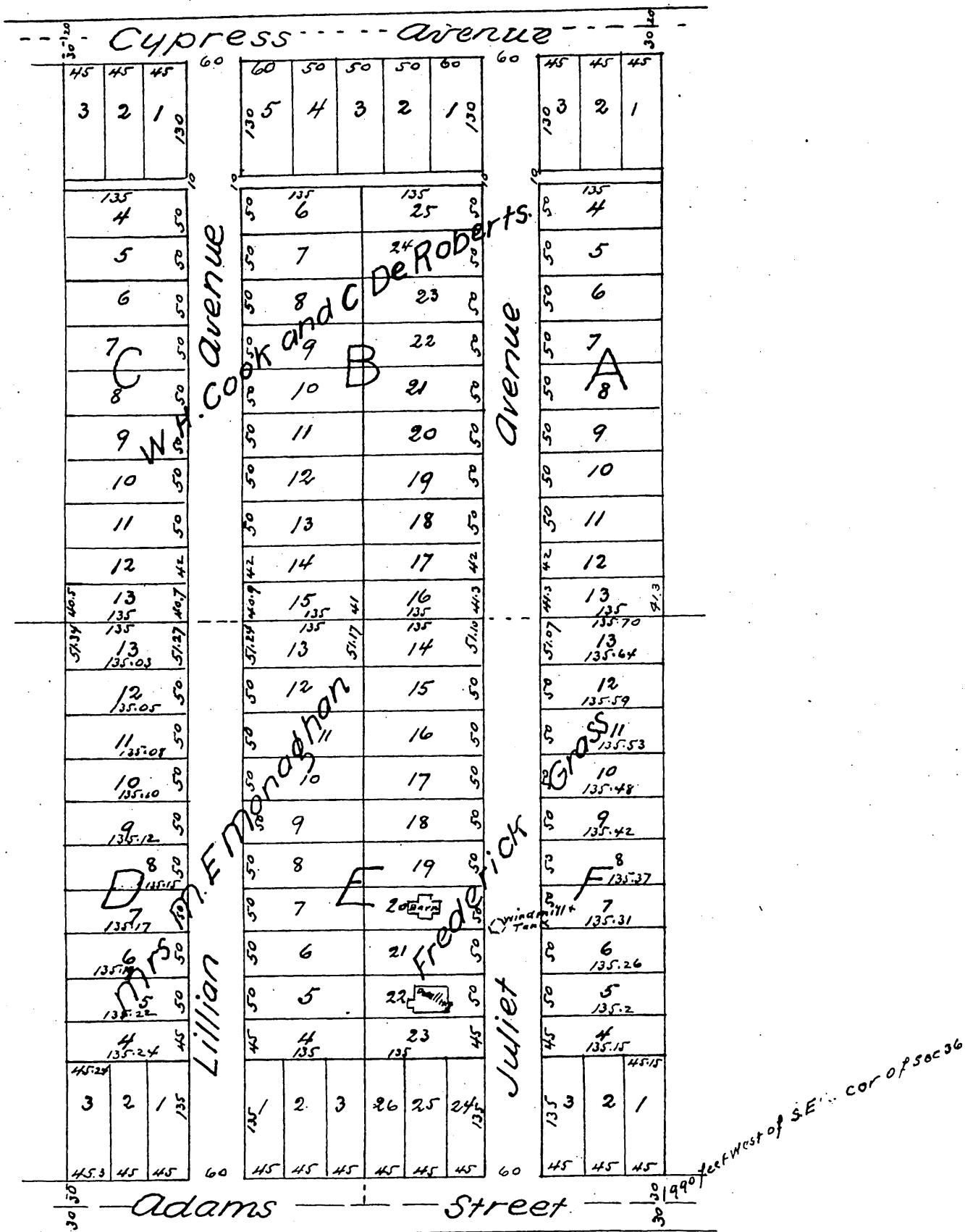


Map of the Adams Street Tract Los Angeles Cal.

Being the property of
Frederick Grass Mrs M. E. Monaghan W. H. Cook and G. Lye Roberts

Scale 100 feet to one inch

Note The Adams St Tract is a Subdivision of the W 1/2 of W 1/2 of S 2 1/4 S. E 1/4
and E 1/2 of E 1/2 of SW 1/4 of S 2 1/4 of Sec 36, T. 1 S. R. 14 W. S. B. 17



a full true and correct copy of the Original.
recorded Jan'y 17th 1888 at 9 15 a.m at request
of W. H. Cook (Reduced to two thirds size)

Frank A. Gibson Co Recorder
by Wm. E. Johnston Deputy