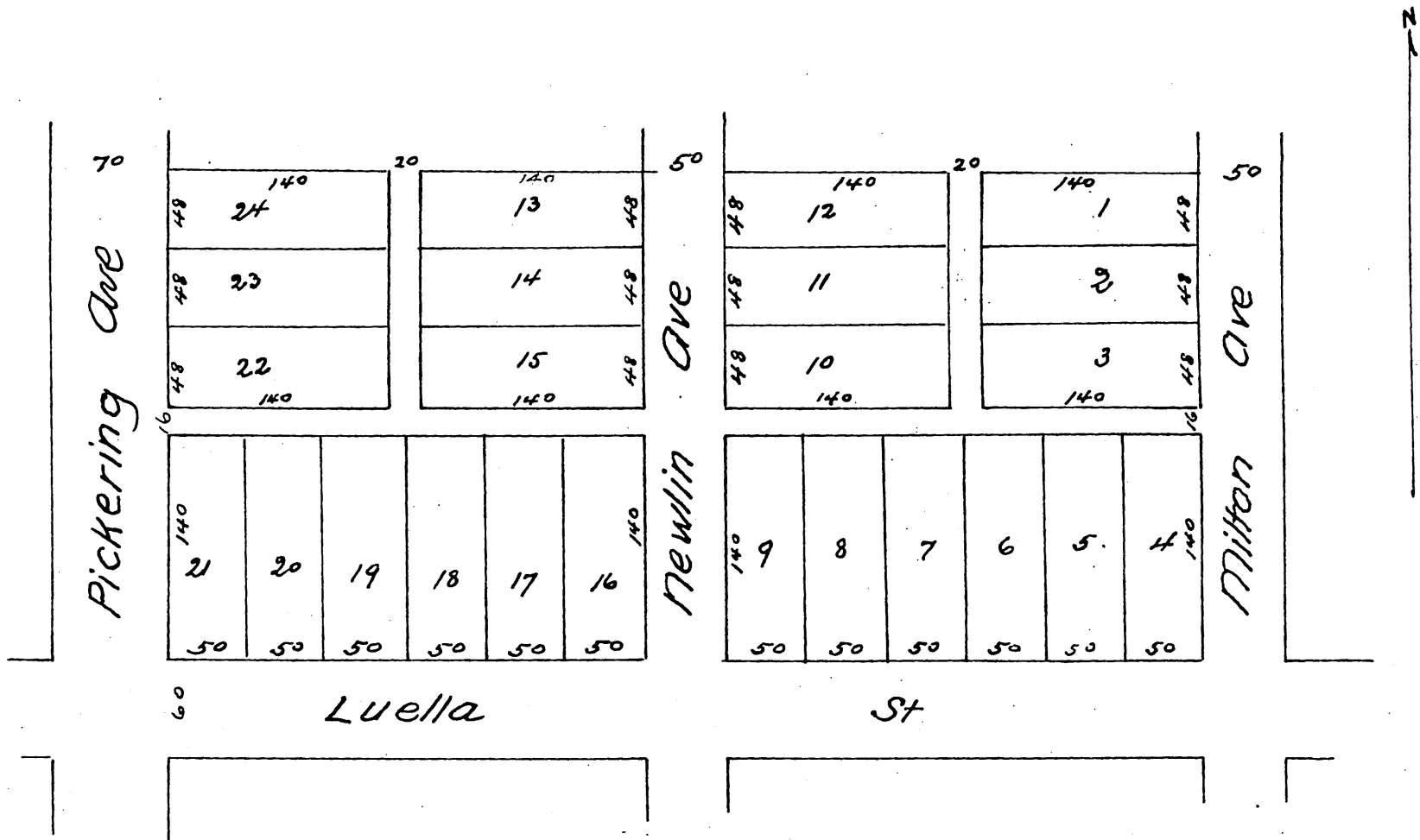


# Jackson's Addition TO Whittier

Being a subdivision of Lot 15 Block C  
of the Pickering Land and Water Company's Subdivision  
of the  
John M Thomas Ranch  
Los Angeles County Cal

Surveyed Dec 1887 by Jessup Reed & Clappitt Surveyors.

Scale 70 feet to 1 inch



A full true and correct copy of the original (reduced to the scale of 100 feet to 1 inch) recorded January 26 1888 at 11:16 AM at request of J. F. Jackson

Frank A. Gibson Co Recorder  
by Wm. E. Johnston Deputy.