

AS - CE - 211

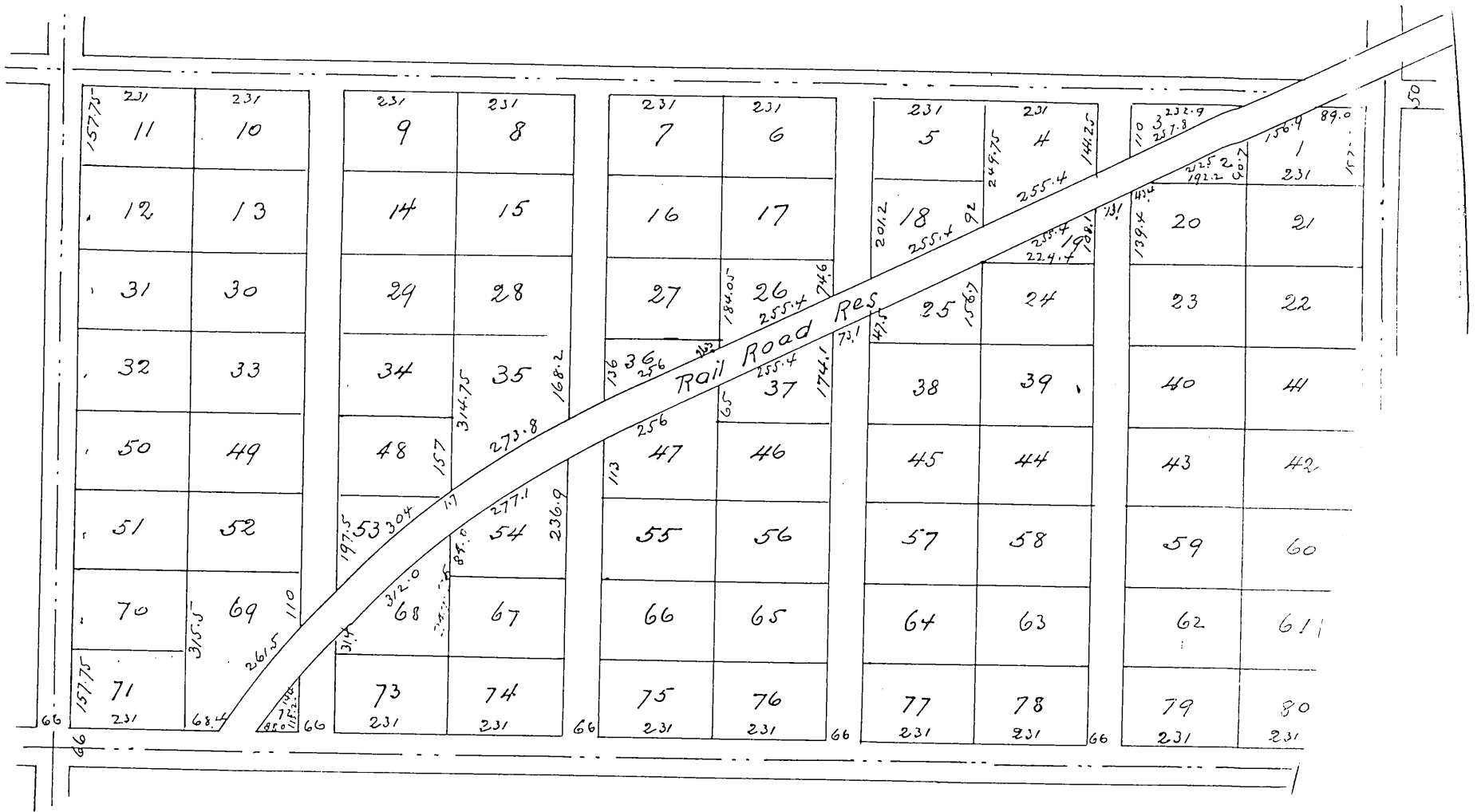
Ross Subdivision

of S 1/2 of S. W 1/4 Sec 29 T 2 S. R 14 W S. B. M

as surveyed by Paul Riecker CE

January 14 to 17 1888

Scale 1 inch = 100 ft.



A full true and correct copy of the original (reduced to one third size)
recorded January 26 1888 at 2 P.M. at request of Bowen Rogers Co.

Frank A Gibson Co. Recorder
by Wm E Johnston Deputy

116-30-57