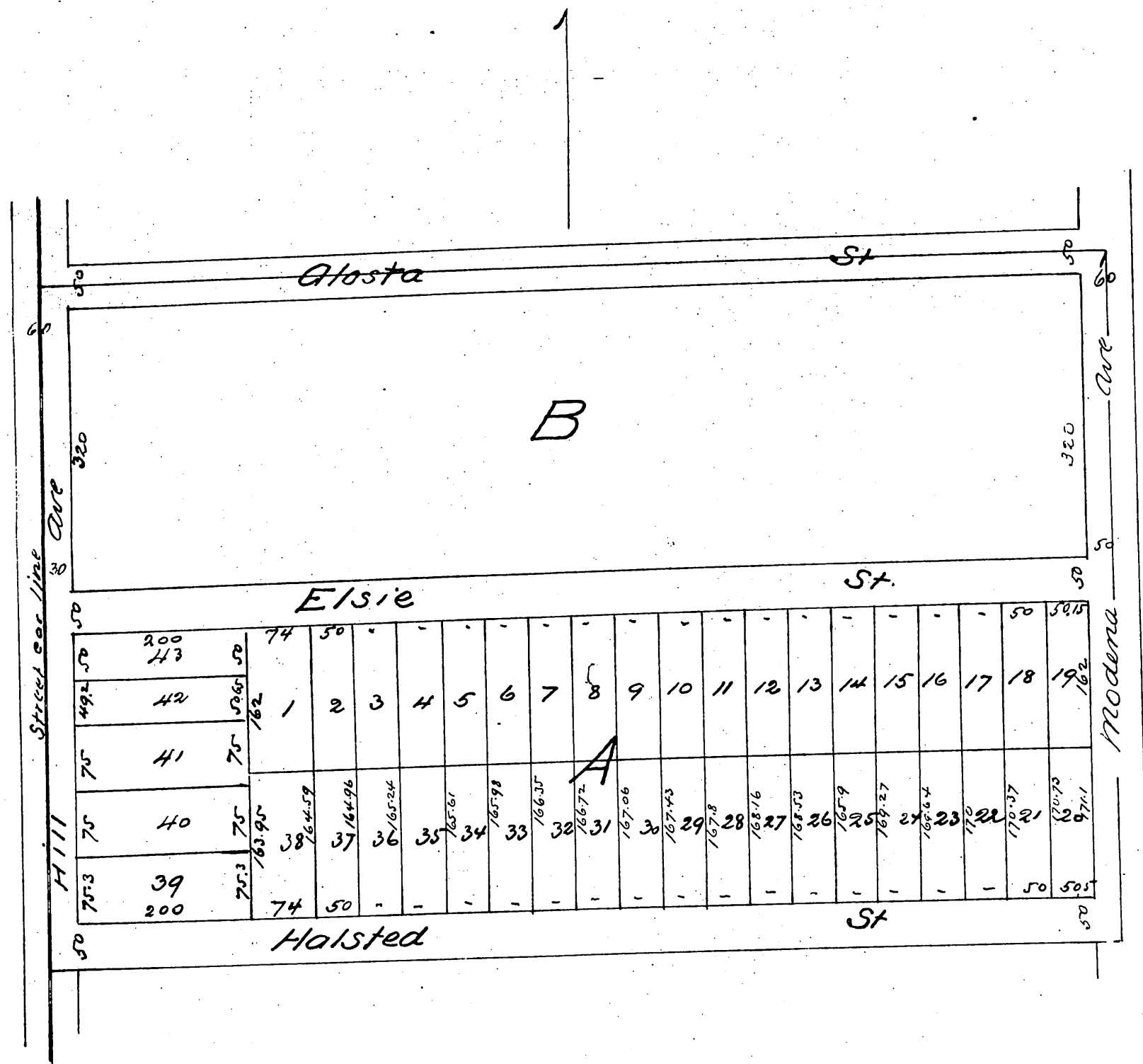


E. H. Royce Subdivision

Being the 21.84 acre tract described in Book of Deeds
No 82 page 103 Los Angeles Records and decreed
Aug 28 1881 by A B Grogan to E. H. Royce

Pasadena Cal.

Surveyed Dec 1887 by Mount & Drummond
Scale 100 ft to 1 inch



A full true and correct copy of the original (reduced to
150 feet to one inch recorded February 6th 1888 at
10³⁰ A.M. at request of E. H. Royce
Frank A. Gibson Co. Recorder
by Wm. E. Johnston Deputy