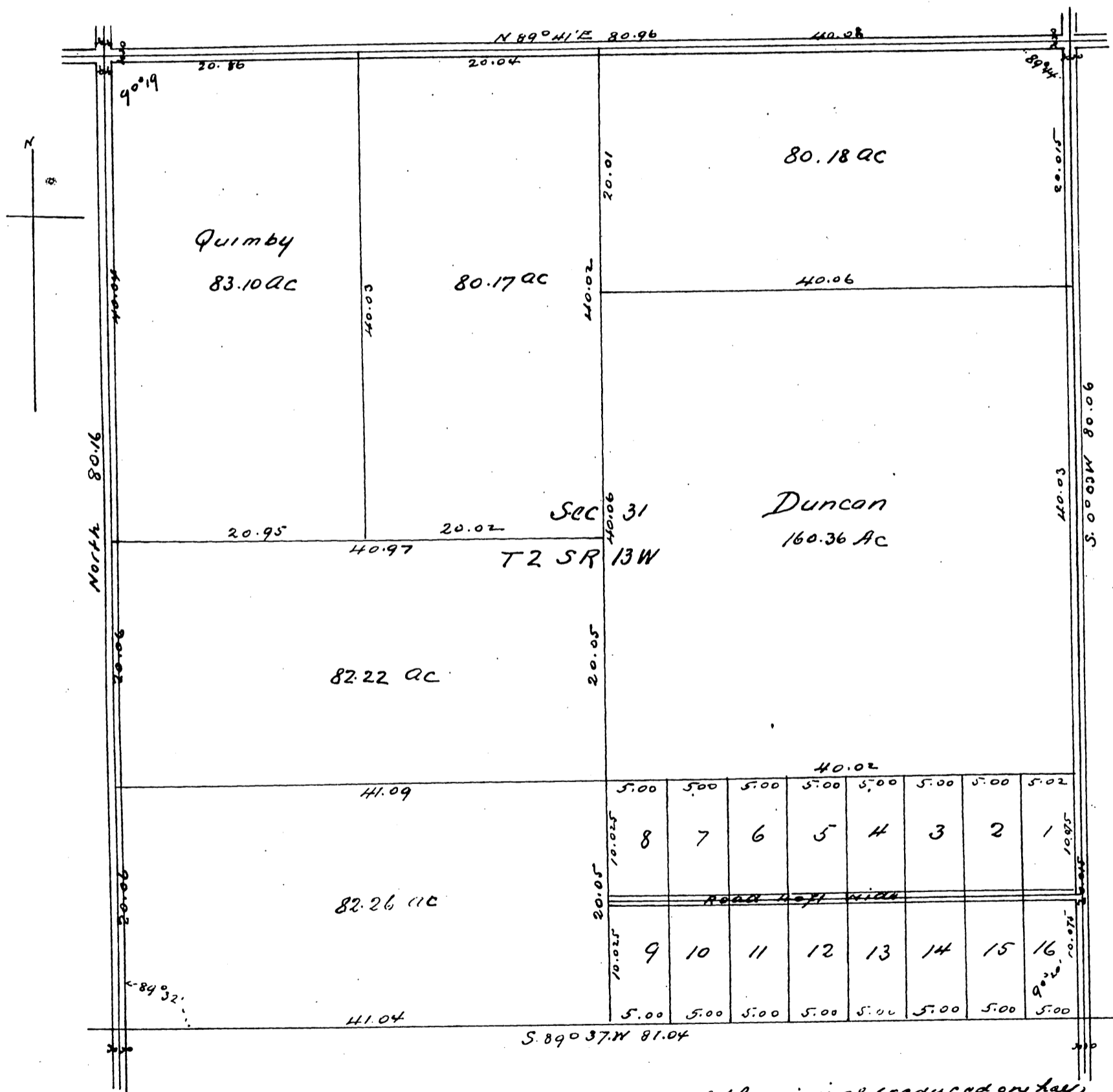


Map
 of the
Howland Subdivision
 of the
SE 1/2 of the SE 1/4 of Section 31 T2 SR 13W S.B.M.
Surveyed at request of W. J. Howland
Jan 26th 1888
by John Goldworthy County Surveyor
Scale 50 ft = 1 inch
True Courses Magnetic Variation 14° 30' E



a full true and correct copy of the original (reduced on half)
recorded February 6th 1888 at 11²⁴ A M at request of W. J. Howland
Frank A. Gibson Co Recorder
By Wm. E. Johnston Deputy