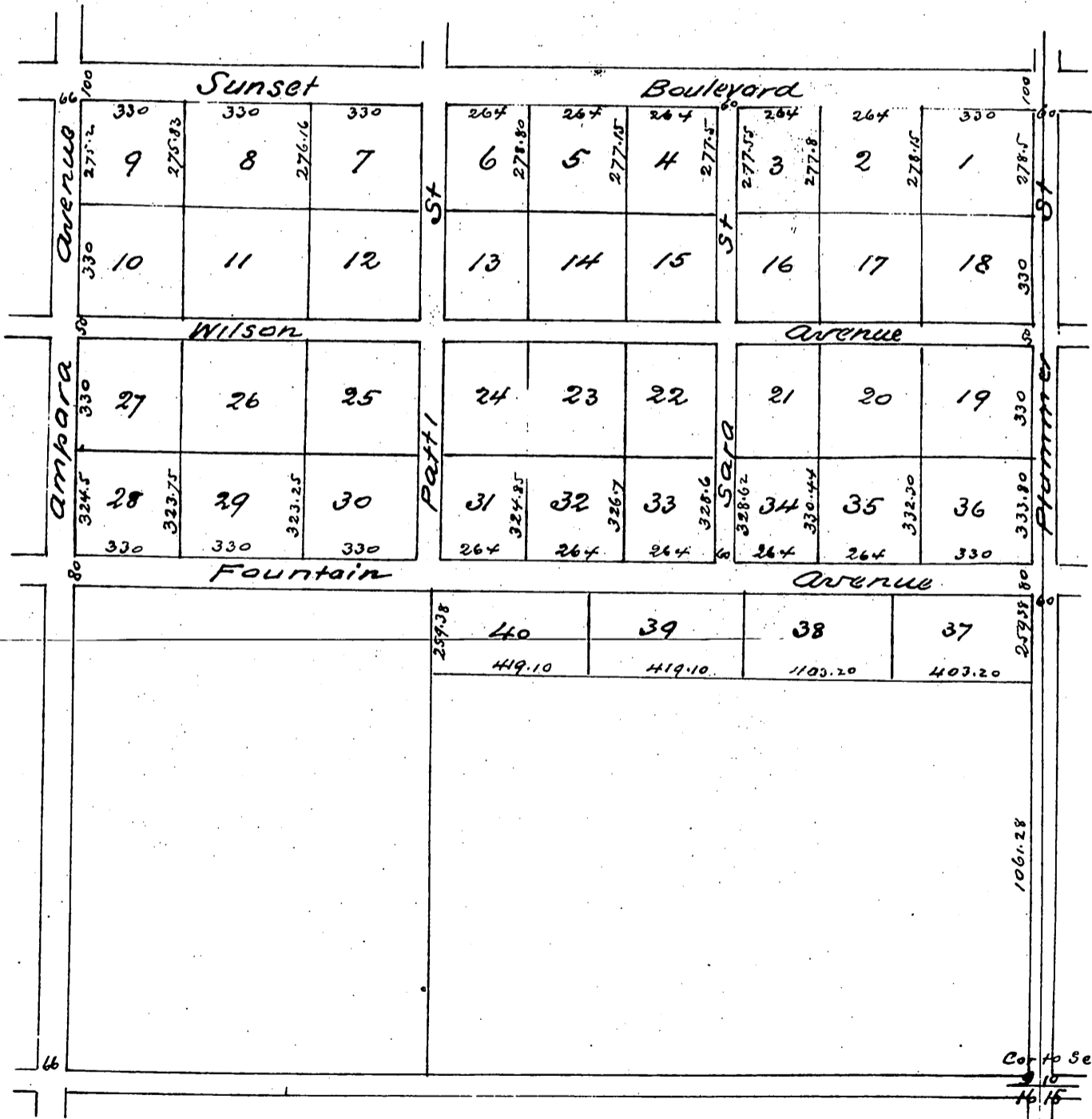


Map  
 of  
 Plummer's Subdivision  
 Being the  $n\frac{1}{2}$  of S.E.  $\frac{1}{4}$  of Sec 9 T1 S.R. 14 W.S. B. m.  
 Los Angeles County Cal.  
 Surveyed Feb 1888 by Flack & Jay  
 Scale 200 to 1 inch



A full true and correct copy of the original (reduced one  
 half) recorded Feb 6<sup>th</sup> 1888 at 12<sup>o</sup> P.M. at request of John L. Plummer  
 Frank A. Gibson Co Recorder  
 by Wm E. Johnston Deputy