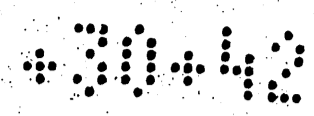


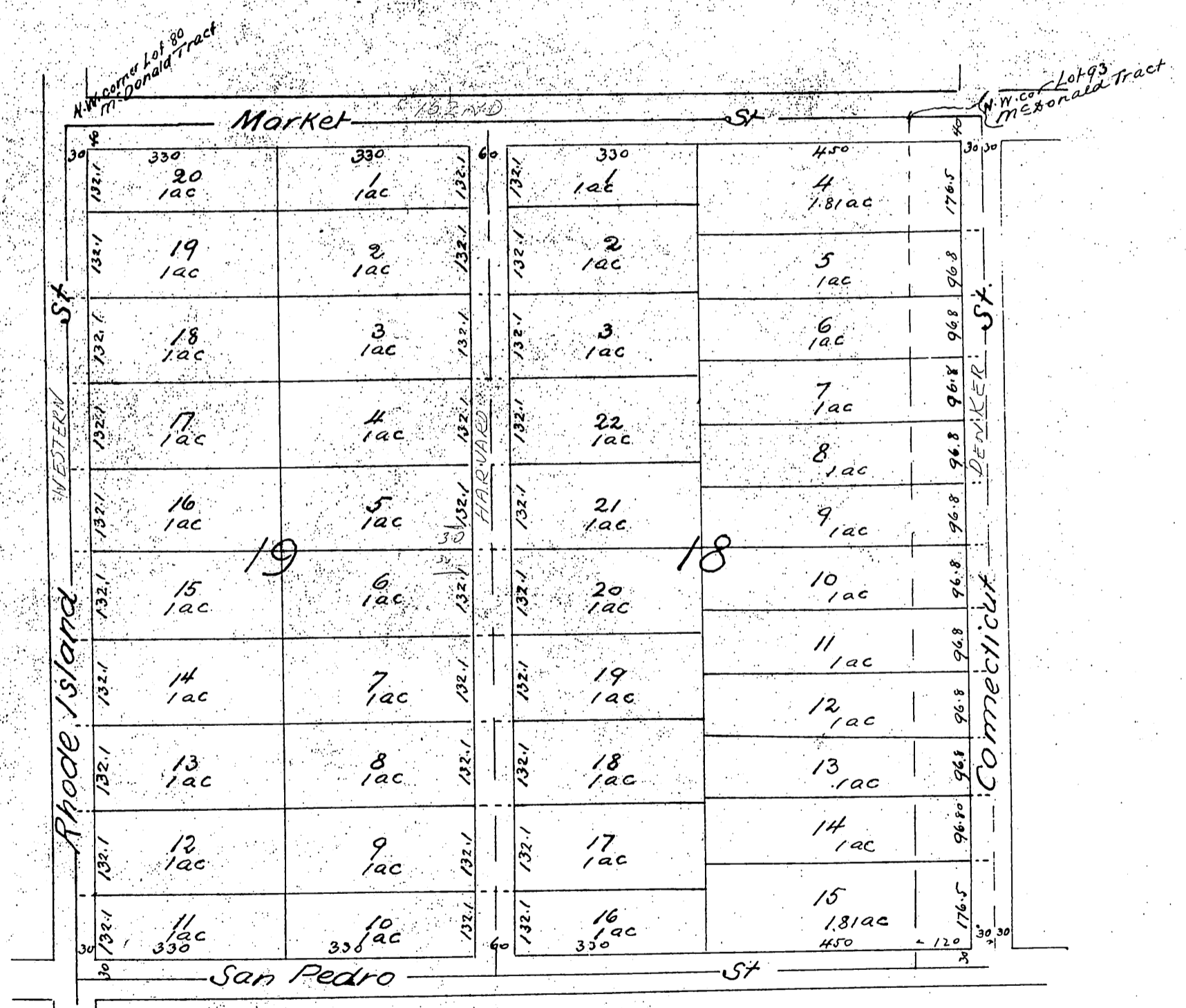
Map of Blocks 18 and 19 of Broadacres



Being a re-division of Block 18 according to original map of Broadacres recorded in Vol 17 page 49 of Miscellaneous Records of Los Angeles Co Cal said original Block 18 being a Subdivision of Lot 80 and a portion of Lot 93 of the Mc Donald Tract as per map recorded in Vol 15 pages 21 and 22 of Misc Records of Los Angeles Co Cal Surveyed in May 1887 by U.J. Rowan Surveyor

Distances and areas go to center of Streets

Scale 200 feet to one inch



a full true and correct copy of the original recorded
Feb. 21st 1888 at 7 min past 4 P.M. at request of A. T. I. Co
Frank A. Gibson Co Recorder
by Geo. Bugbee Deputy