

# Map

of a re-subdivision of  
a portion of

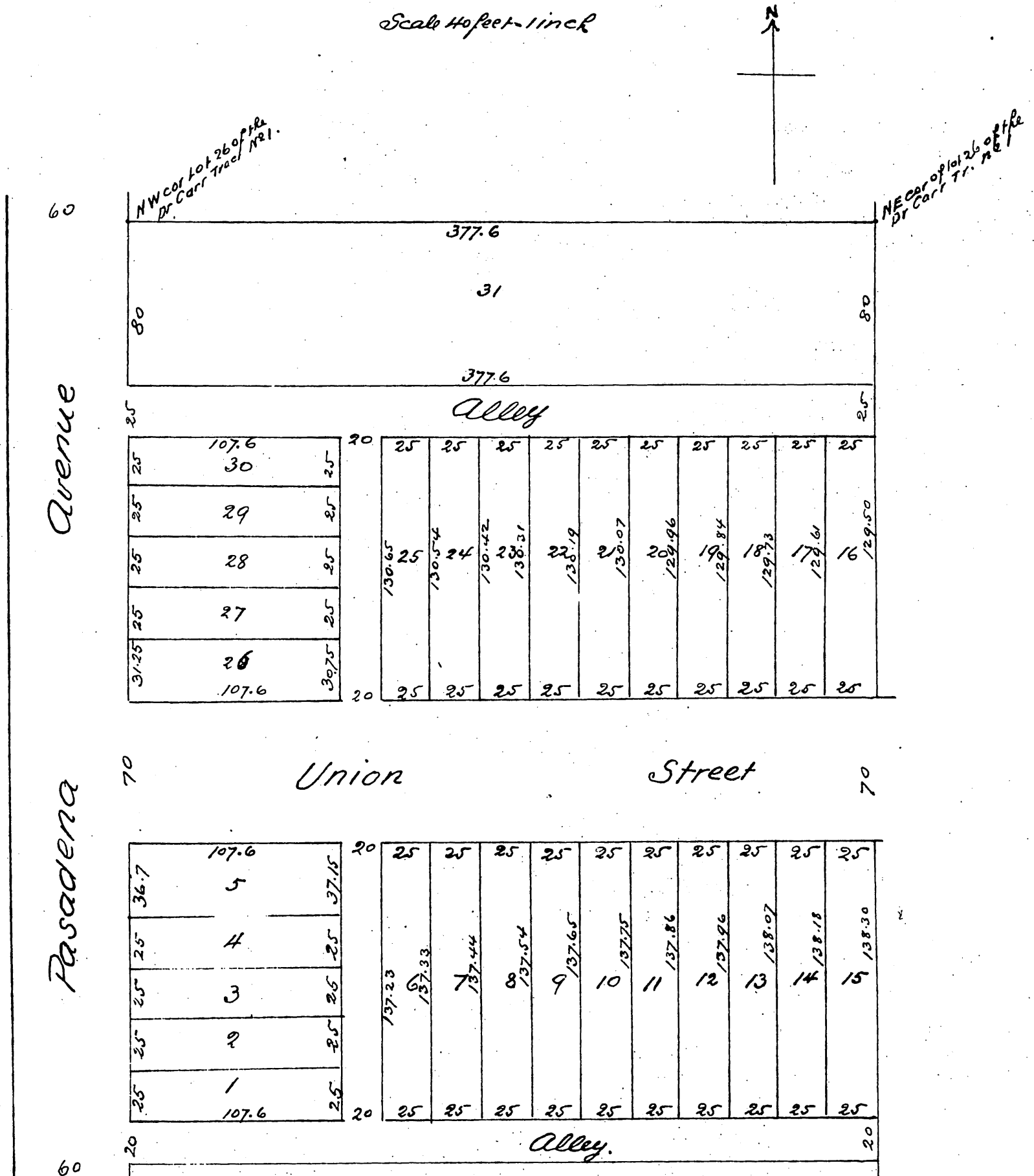
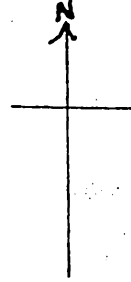
## The Dr Carr Tract No 1

as recorded in Book 11 page 37 Records of Los Angeles County

Pasadena Cal

Surveyed by Willard & Miller Feb 1888

Scale 40 feet = 1 inch



a full true and correct copy of the original  
 reduced to 60 ft to one inch: recorded Feb 23<sup>rd</sup> 1888  
 at 9<sup>29</sup> a.m at request of Mrs Jeanne C. Carr  
 Frank A. Gibson Co Recorder  
 by Geo Bugbee Deputy