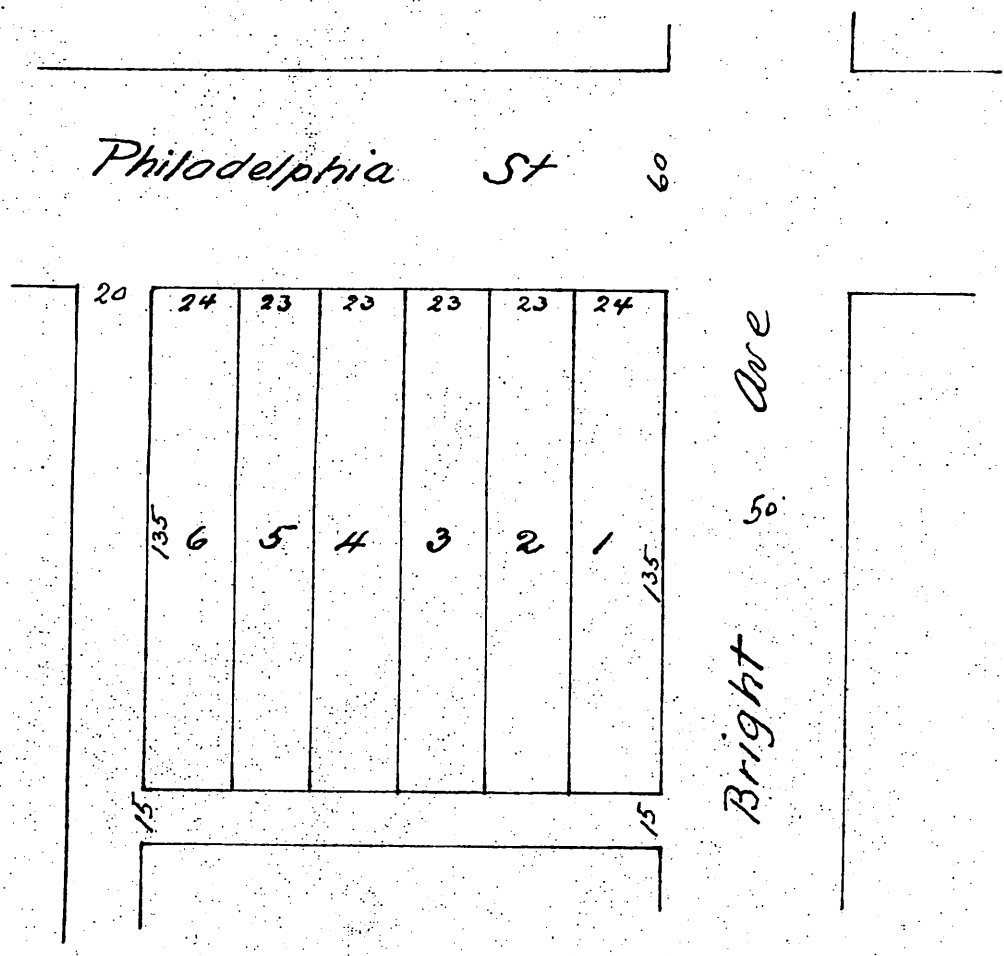


# Pickering's Subdivision Whittier

Being a replat of Lots 1, 2 & 3 Block 20  
of the Pickering Land and Water Company's Subdivision  
of the

John M Thomas Ranch  
Los Angeles County Cal

Surveyed Jan 1888 by Jessup, Reece, Clappitt  
Scale 50 feet to inch



A full true and correct copy of the Original recorded  
Feb 23. 1888 at 12:30 M at request of A. H. Pickering  
Frank A Gibson County Recorder  
by George Bugbee Deputy