

Plat

showing part of the 320 acres of land
allotted to Francisca Abila wife of Theo Pimpau
in the partition of the

Rancho La Cienega

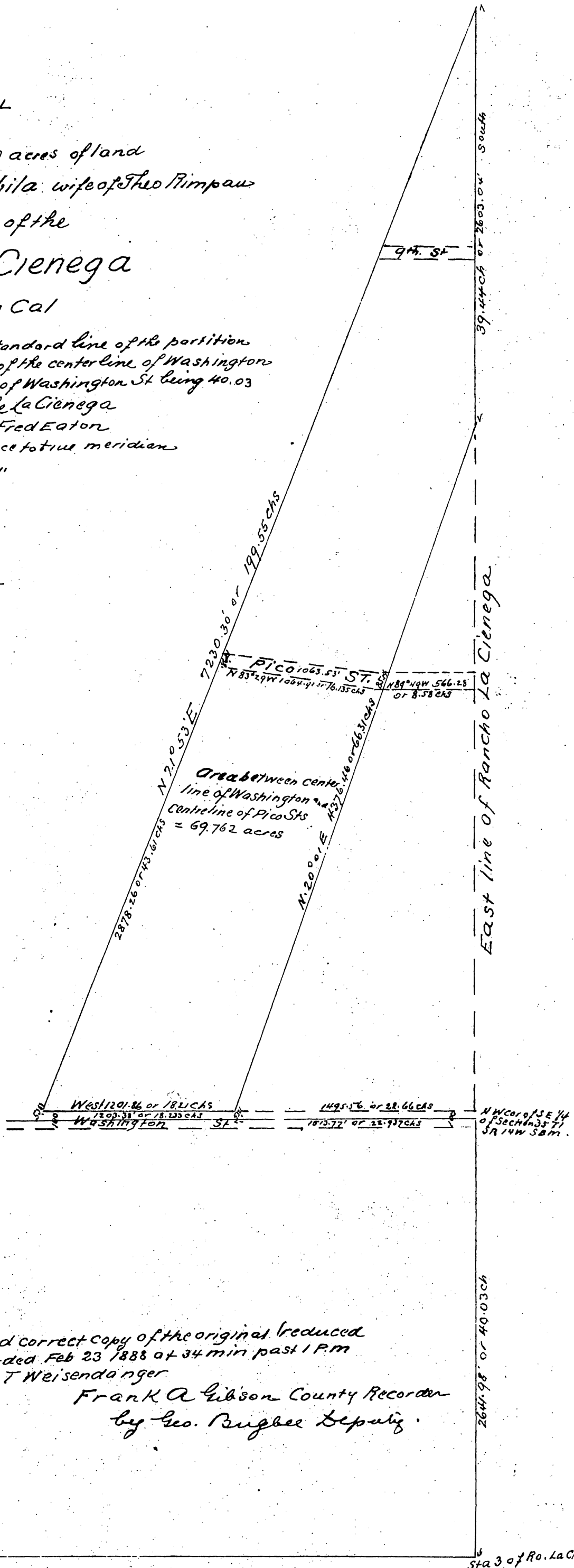
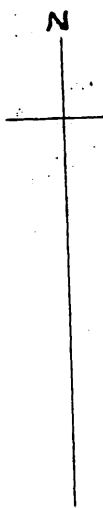
Los Angeles Co Cal

The land shown lies north of the Standard line of the partition
of said Rancho Total area North of the center line of Washington
St = 137.339 acs Said center line of Washington St being 40.03
chains North of Station (3) of Rancho La Cienega

Surveyed in Jan 1887 by Fred Eator

Note The courses are with reference to true meridian

Scale 300' = 1"



A full true and correct copy of the original (reduced
one half) recorded Feb 23 1888 at 34 min past 1 P.M
at request of T Weisendanger

Frank A Gibson County Recorder
by Geo. Bugbee Deputy