



Map of Central Arlington Heights

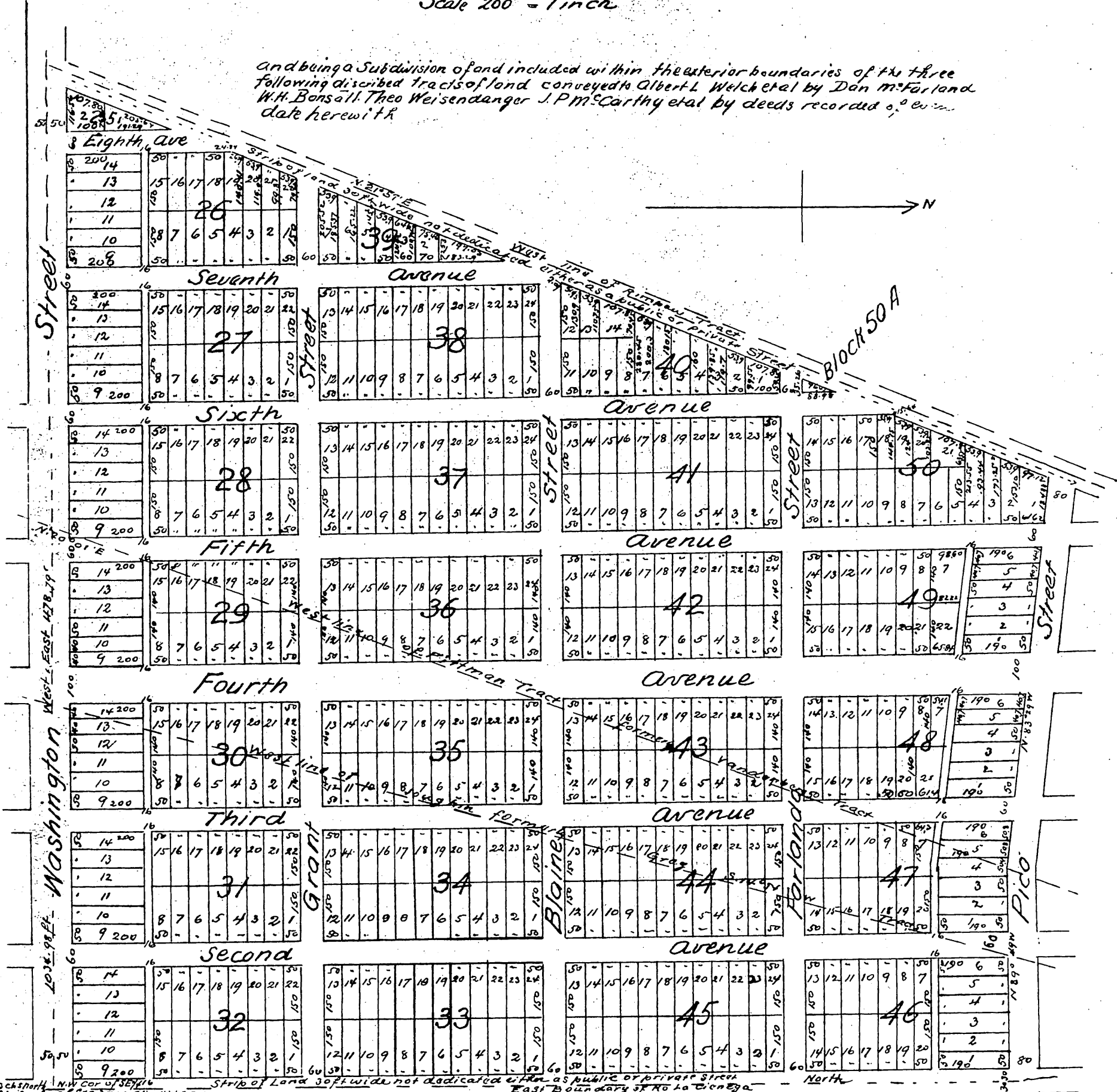
Being a Subdivision of parts of three tracts formerly known as the Joughin Pittman and Rimpau Tracts

All were formerly of the R^o La Cienega

Subdivided at request of J. G. Ogilvie et al. by M. Glueck Peros in Jan 1888

Scale 200' = 1 inch

And being a Subdivision of land included within the exterior boundaries of the three following described tracts of land conveyed to Albert L. Welch et al by Dan M. Farland, W. H. Bonsall, Theo Weisendanger, J. P. McCarthy et al by deeds recorded on the date herewith.



A full true and correct copy of the original (reduced to 300 feet to one inch) recorded Feb 23rd 1888 at 1:44 P.M. at request of J. G. Ogilvie Frank A. Gibson Co. Recorder by Geo. Bugbee Deputy