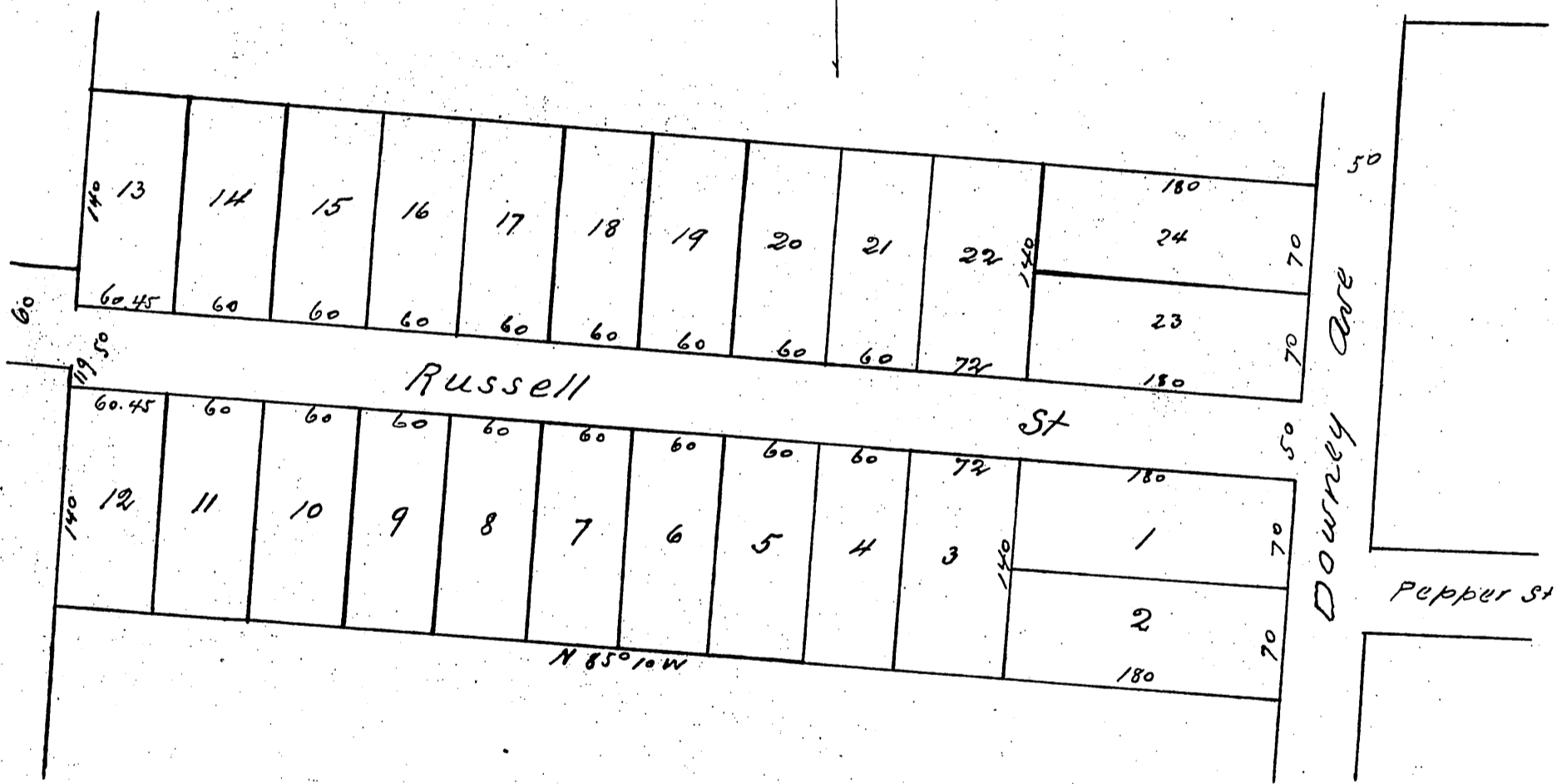
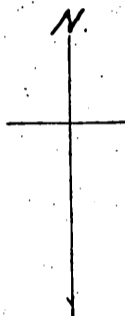


James Townsend's Subdivision
 Being the S 1/2 of Lot 19 Blk A San Pasqual Tract
 of the Lake Vineyard Land & Water Association Lands
 Pasadena Cal

Surveyed Dec 1887 by Jessup Reeces & Clappitt Surveyors
 Scale 70 feet to 1 inch



A full true and correct copy of the original
 (reduced to 100 feet to one inch) recorded Feb 24.
 1888 at 11:30 A.M. at request of Jas Townsend
 Frank A Gibson Co Recorder
 by Geo. Bugbee deputy