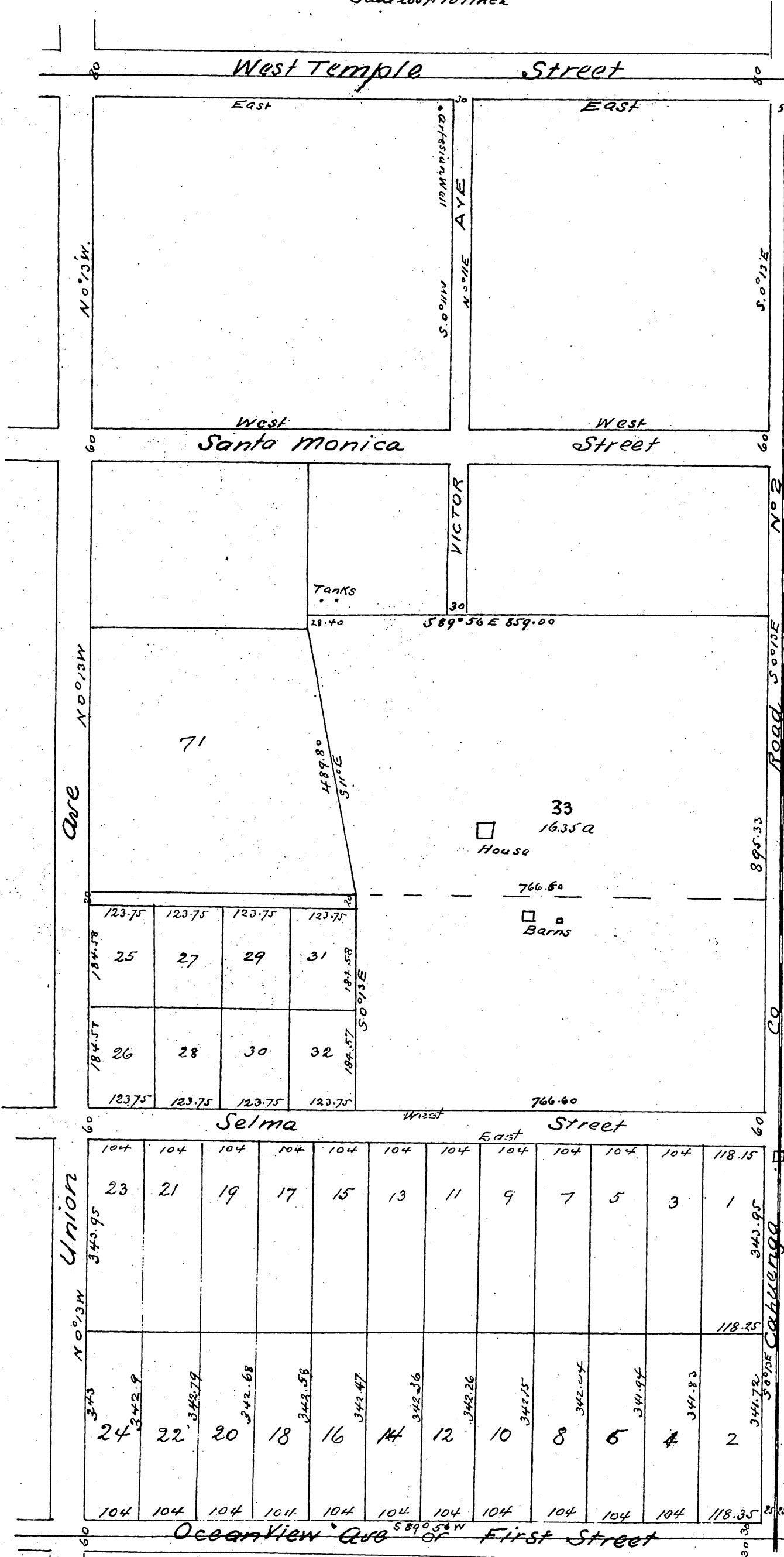


Map of I. A. Weid's Subdivision No 2

of a part of the
SE 1/4 Sec 14 T1. R14W S. B.M.
Being lots 41 to 50 & 71 to 76 inclusive as shown on map recorded in Book 113 page 39
Misc Records Los Angeles Co Cal
Surveyed Feb 1888 by Wright & Nicholson
Scale 200 ft to 1 inch



A full true and correct copy of this original recorded Feb 25th 1888 at 11 Min. past 12 M at request of I. A. Weid
Frank R. Gibson Co Recorder
by Geo. Bugbee Deputy.

Weid Station

S.E. cor. Sec 14