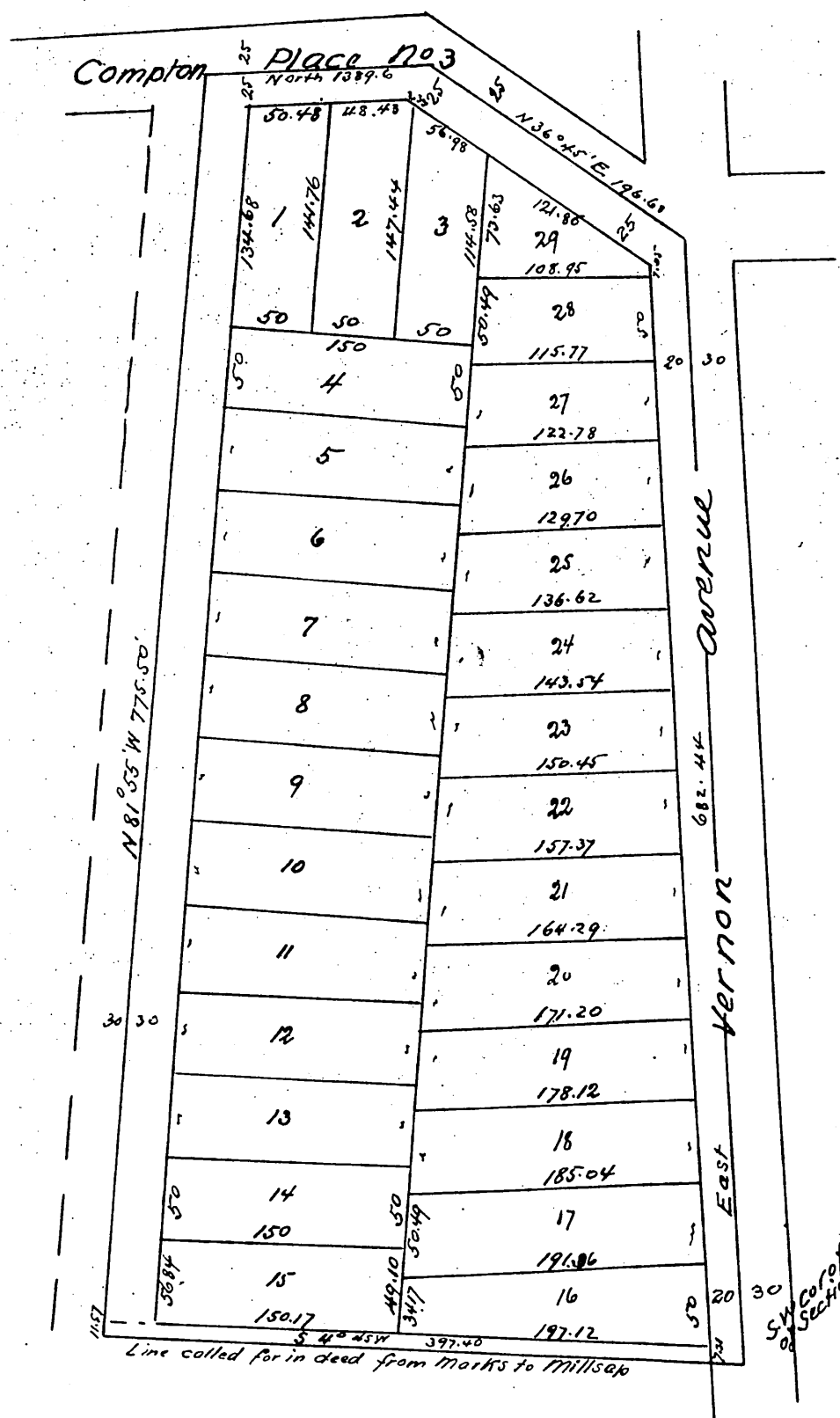


Map of Millsap's Addition to Vernondale

Being a Subdivision of 6 acres in the SE 1/4 of the SE 1/4
of the SW 1/4 of Section 9, T2 S, R. 13 W S. B.B. M
Subdivided at the request of Thomas Millsap
Sept 1887
by McClure Bros
Scale 100 ft to 1 in



a full true and correct copy of the original recorded
Feb. 27, 1888 at 1 P. M. at request of Thos. Millsap
Frank A. Gibson Co Recorder
by Wm E. Johnston Deputy