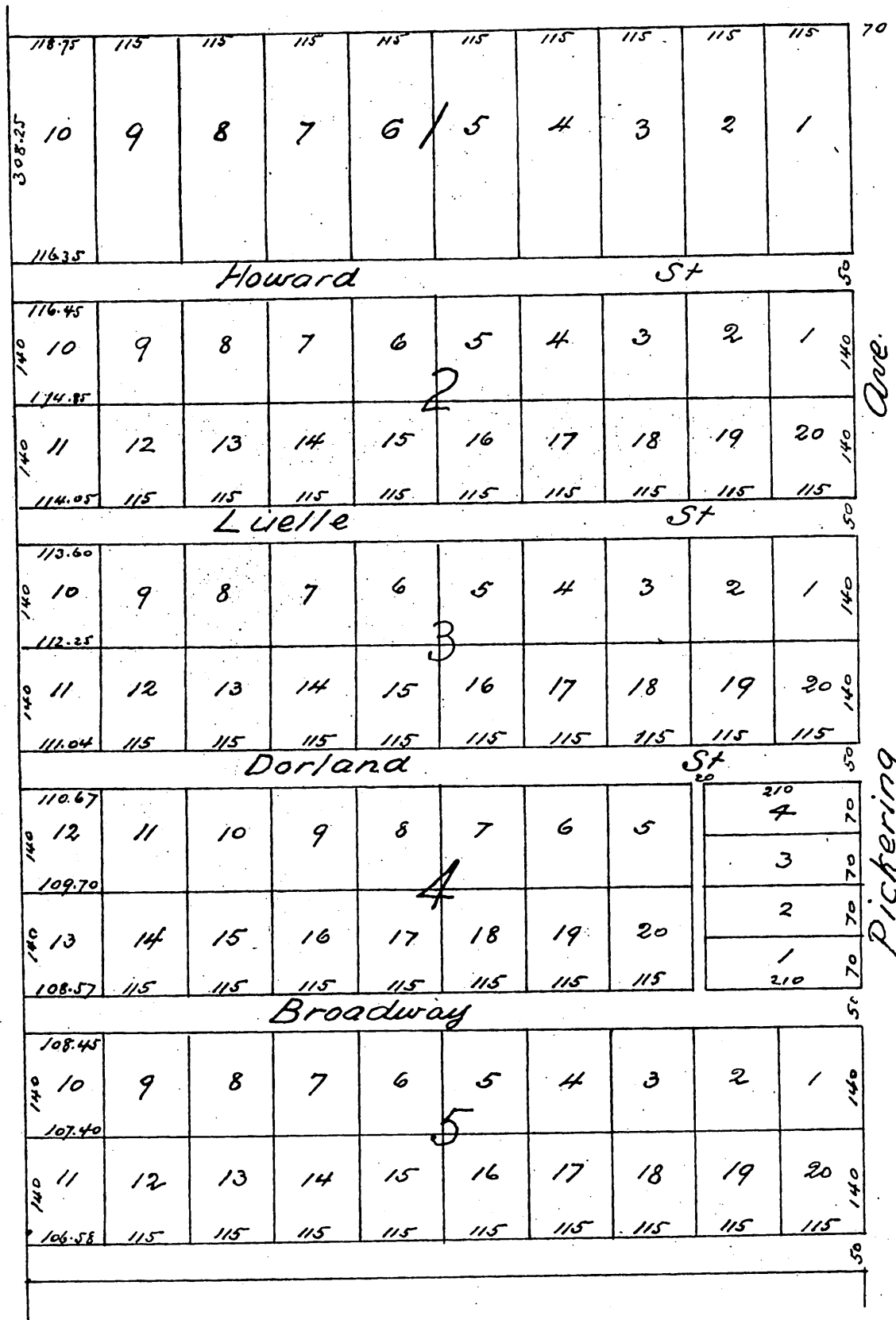
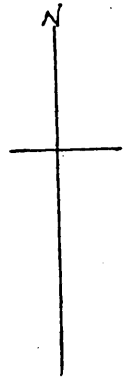


Dorland's Addition to Whittier

Being a Subdivision of lots 1, 2, 3, 4 & 5 Block D
of the Pickering Land & Water Company's Subdivision of the

John M. Thomas Ranch
Los Angeles County Cal

Surveyed Oct 1887 by Jessup Reece Sur.
Scale 100 feet to 1 inch



A full true and correct copy of the original
reduced to 200 feet to one inch, recorded Feb 27, 1888
at 3:20 P.M. at request of A. Pickering
Frank A. Gibson Co Recorder
by George Bugbee Deputy