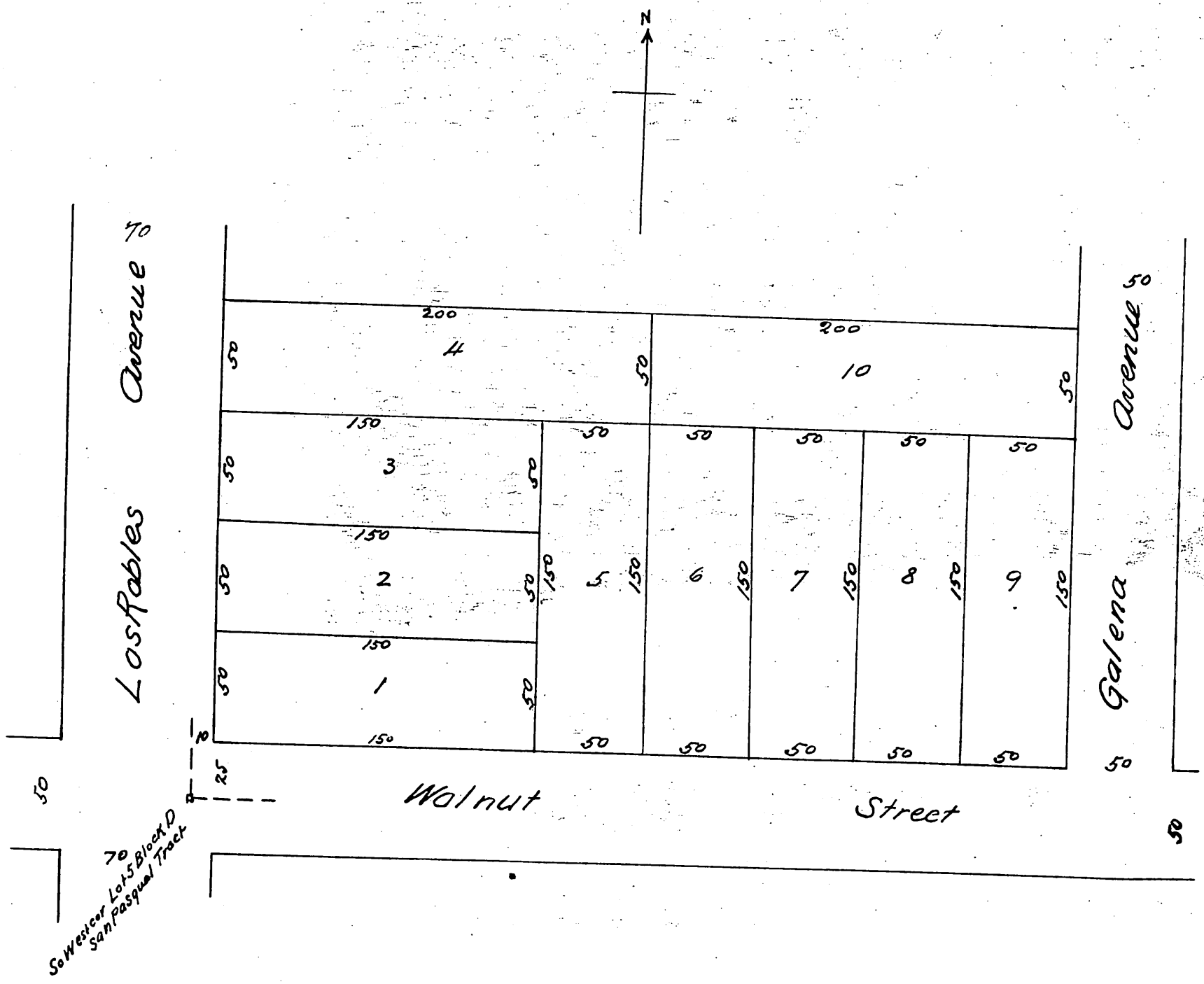


Map
 of the
 Wallace Bros
 Los Robles and Walnut Subdivision
 of a part of
 White's Subdivision of Lot 5 Block D San Pasqual Tract
 Pasadena Cal

as per map of said White's Subdivision recorded in Book 16 page 67
 Misc Records of Los Angeles County Cal

Surveyed by Willard & Miller Feb 1888

Scale 40 feet 1 inch



A full true and correct copy of the original (reduced to 60 feet to one
 inch) recorded Feb 28th 1888 at 11:39 A.M. at request of
 Wallace Bros

Frank A. Gibson Co Recorder
 by Geo. Bugbee Deputy