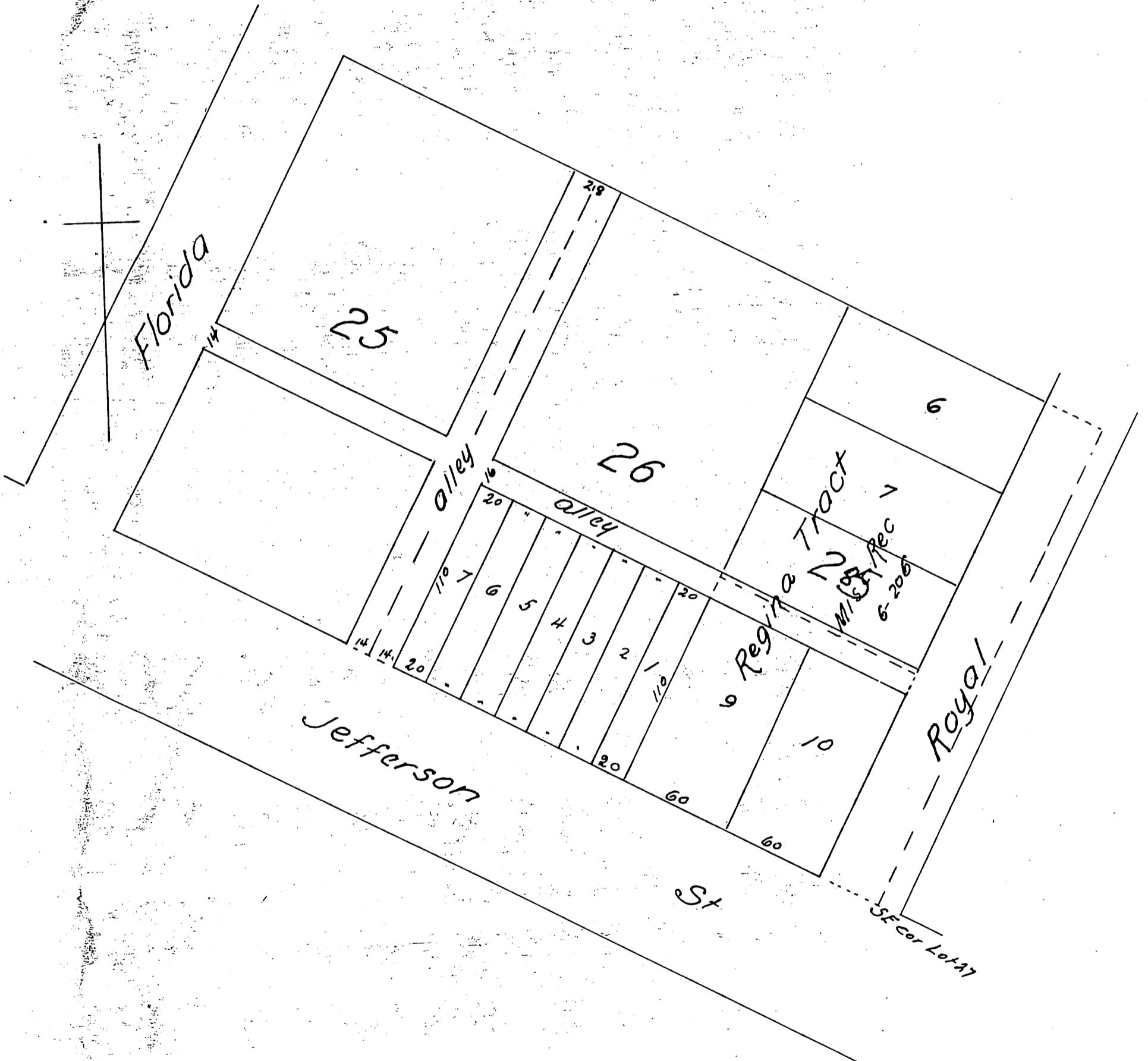


A Subdivision  
of  
Lots 25, 26 of the Dana Tract  
Recorded in Misc 5-324  
Also Lots 8, 9 & 10 Regina Tract  
Recorded in Misc Book 6 206  
Scale of 60'-1"  
L.A.A.C.O.



A full true and correct copy of the original recorded Feb 28 1888  
at 11<sup>53</sup> a m at request of E. Bennett  
Frank A Gibson Co. Recorder  
by George Bugbee Deputy.