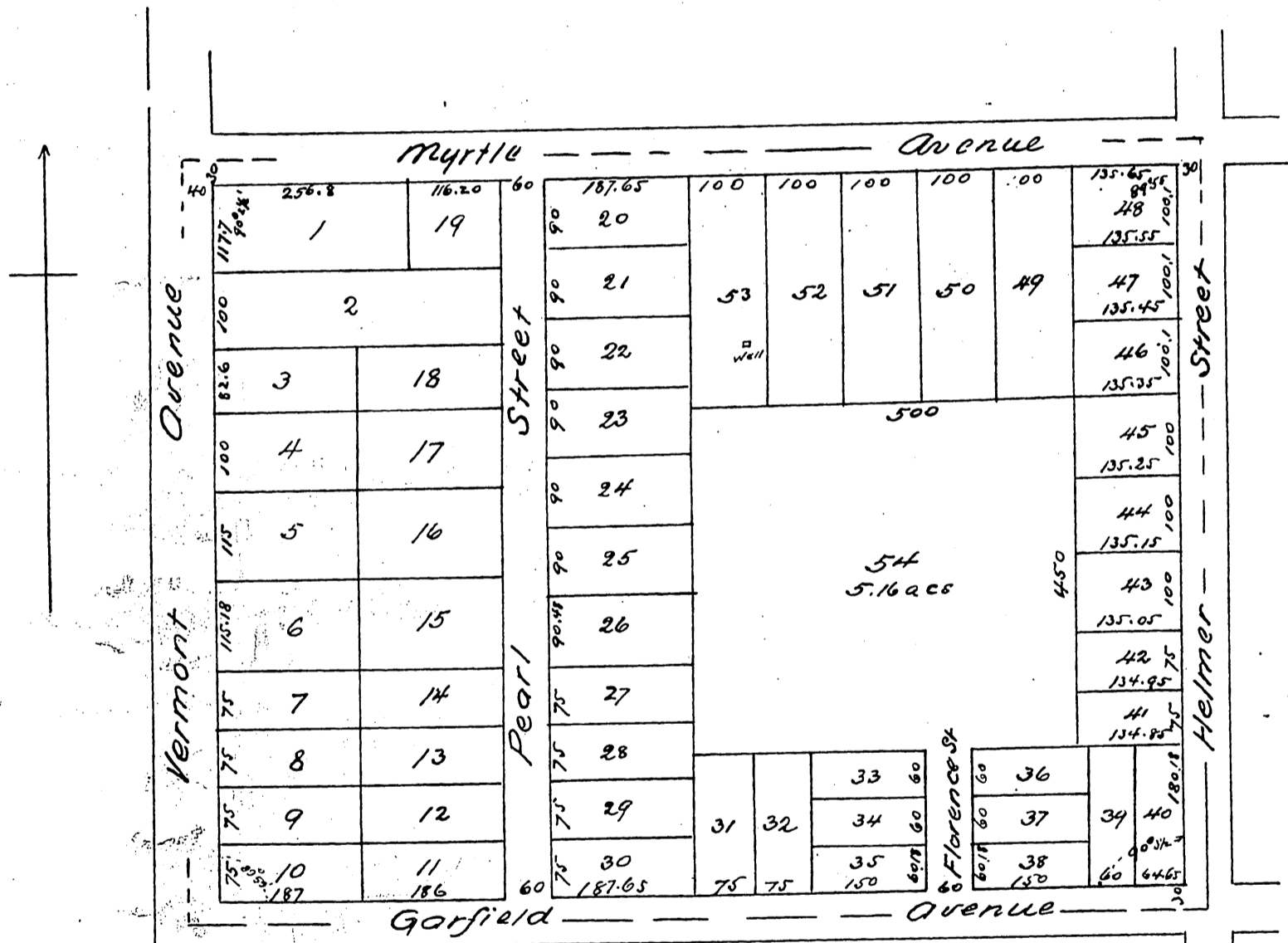


Pratt and Gregory's Subdivision
of Lot 8 and South 10 acres Lot 3 West Subdivision
of the
LICK TRACT
Los Angeles County California
Surveyed and platted January 1888 by
Stephens & Miller
Scale 100 ft = 1 inch



a full true and correct copy of the original (reduced to 200 ft to one inch) recorded Feb. 29 1888 at 11:40 a.m. at request of Pratt and Gregory.

*Frank A. Gibson Co. Recorder
by Geo. Bugbee, Deputy*