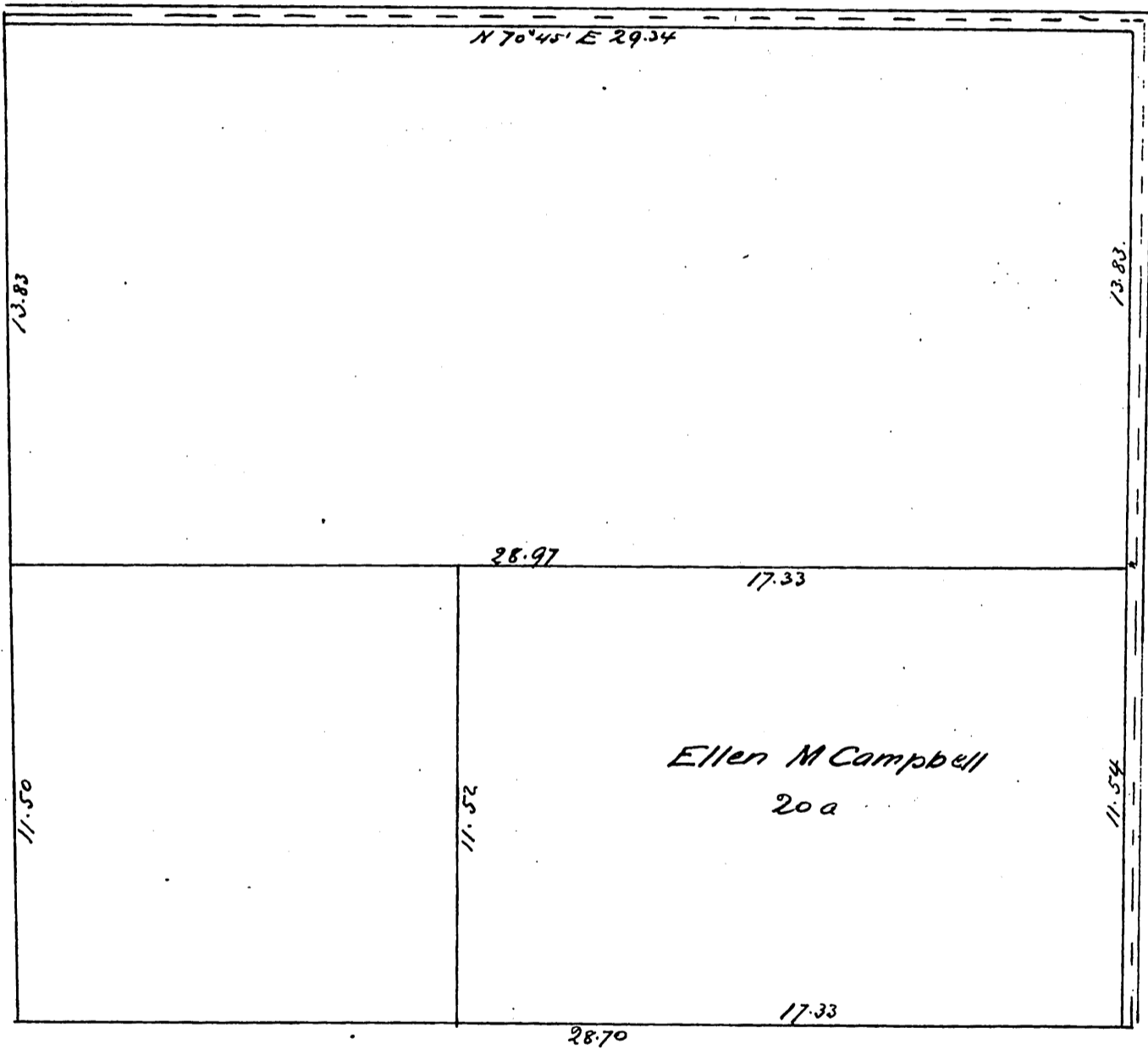
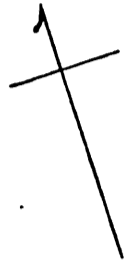


Map
 Showing the division
 of Lot 1 of the Slauson Tract
 Los Angeles Co California
 Scale 40 chs. = 1"



A full true and correct copy of the original recorded March 1, 1888
 at 2:40 PM at request of Jas Campbell
 Frank A. Gibson Co Recorder
 by Wm E. Johnston Deputy