

Map of Blocks 1.2.7.8.9.10.12 & 13 of the Diamond St Tract

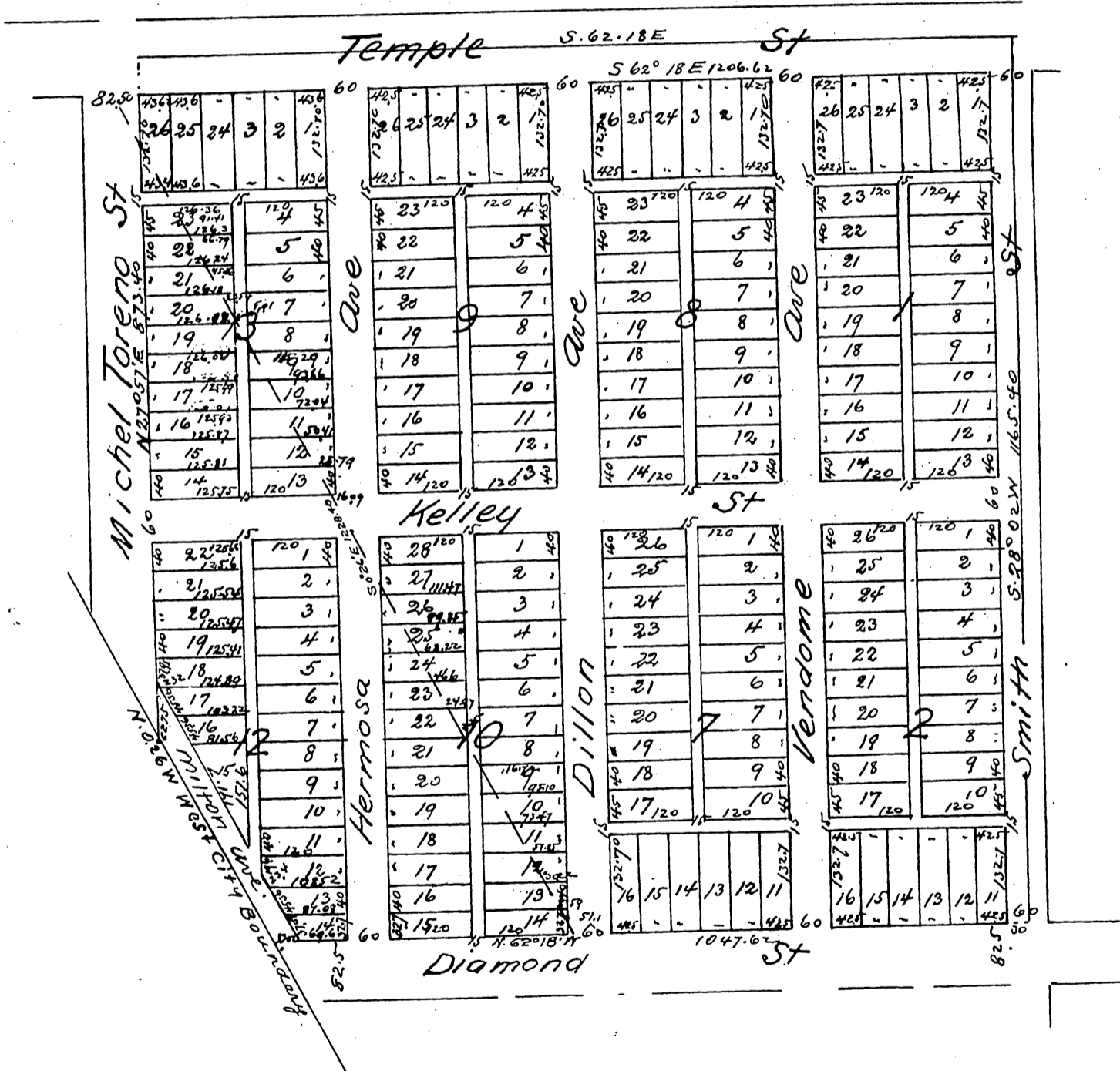
Being a Subdivision of lot 5 BIK 27 Hancock's Survey

City of Los Angeles Cal

Surveyed Sept 1887 by Pillsbury & Cleveland

Scale 100 ft to inch

Note Blocks 1.2.7.8.9 and 13 are resubdivisions of said Blocks of the Diamond St Tract recorded Sept 28 1887 in Book 23 page 100 of Miscellaneous Records Los Angeles Co Cal.



A full true and correct copy of the original (reduced one half) recorded
March 3rd 1888 at 2⁵⁴ P.M. at request of Morford & Son
Frank A. Gibson Co Recorder
by Wm E. Johnston Deputy