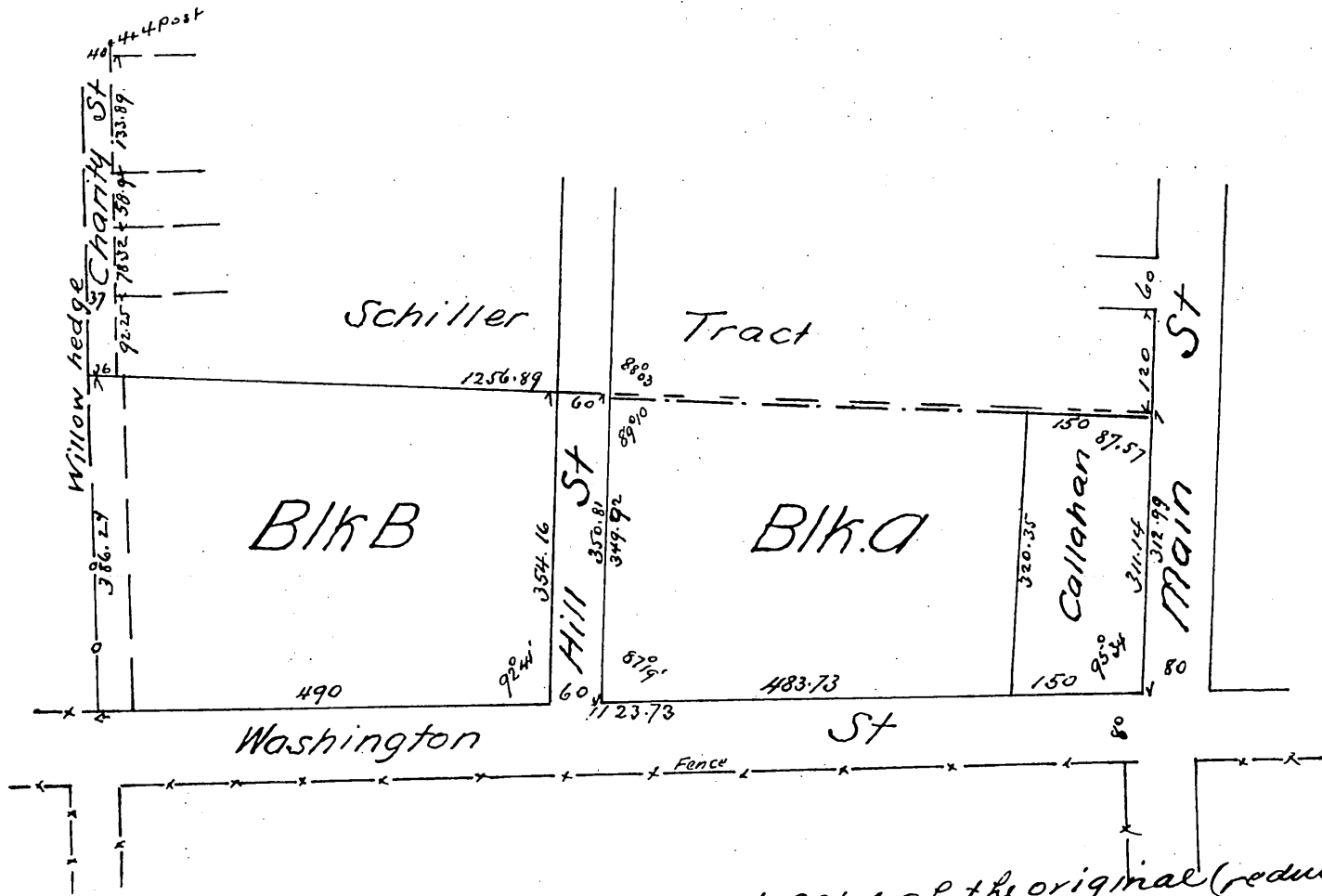


Plat
of
Prager Tract
in the City of Los Angeles
resubdivided
at the request of Charles Prager
in February 1888 by George C. Knox C.E.
Scale 100ft to one inch

Note There is a strip of land in the North of this Tract fronting 185 feet on the West side of Main Street and fronting 0.89 feet on the East side of Hill St at the intersection of the North boundary of the Prager Tract and not included in this subdivision belonging to Chas Prager



A full true and correct copy of the original (reduced one half) recorded March 3 1888 at 39 min past 4 P.M. at request of Chas Prager

Frank A. Gibson Co Recorder
by Wm E. Johnston Deputy