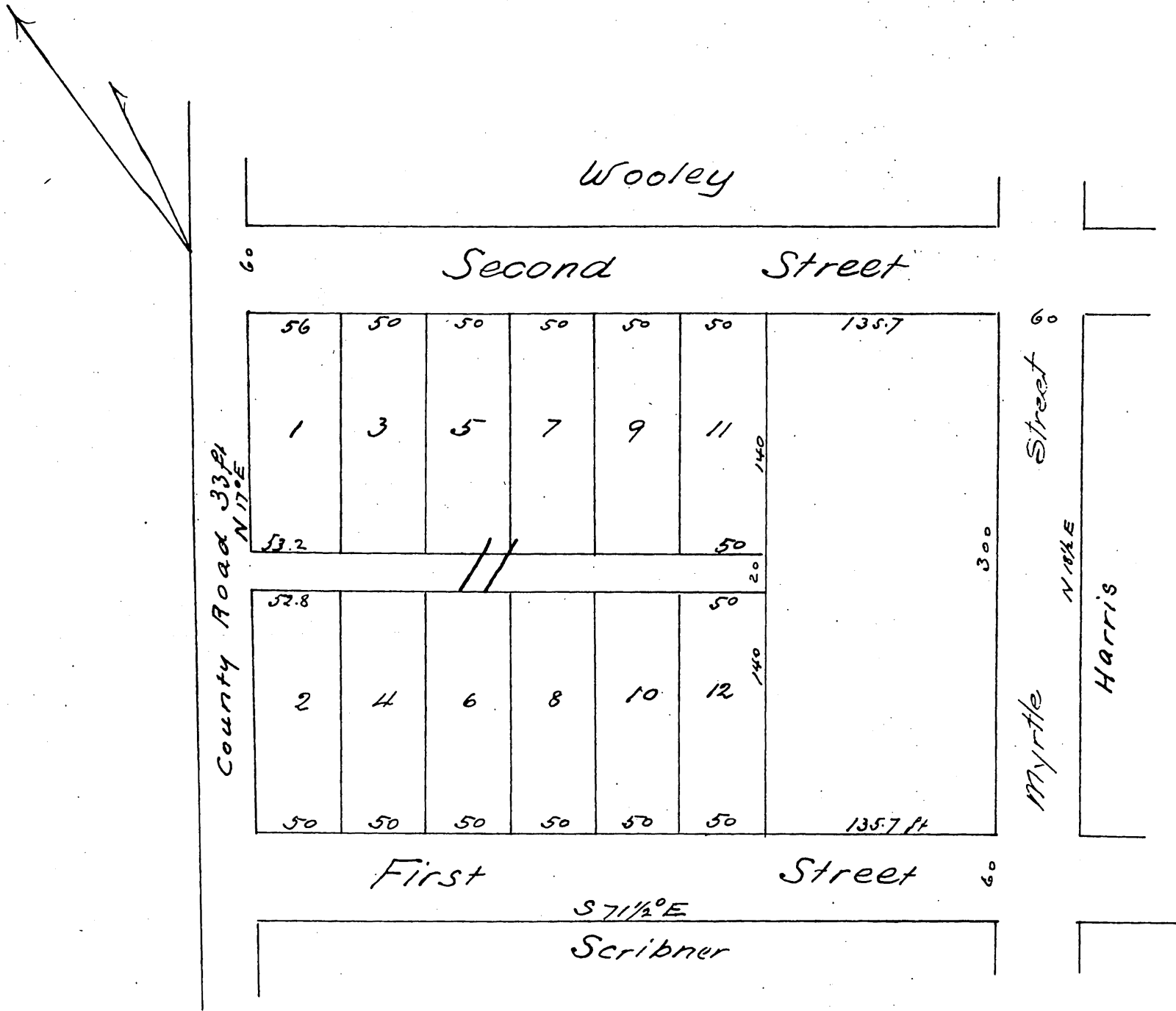




Greening's Subdivision
 Block II
 Downey City
 Los Angeles County California
 Surveyed Aug 8th 1887
 Scale 40ft per inch Var 14°55'E
 W. B French Surveyor



A full true and correct copy of the original recorded March 6th 1888
 at 8⁴⁰ a.m. at request of E.G. Greening (Reduced one half)
 Frank A. Gibson Co Recorder
 by W. E. Johnston Deputy