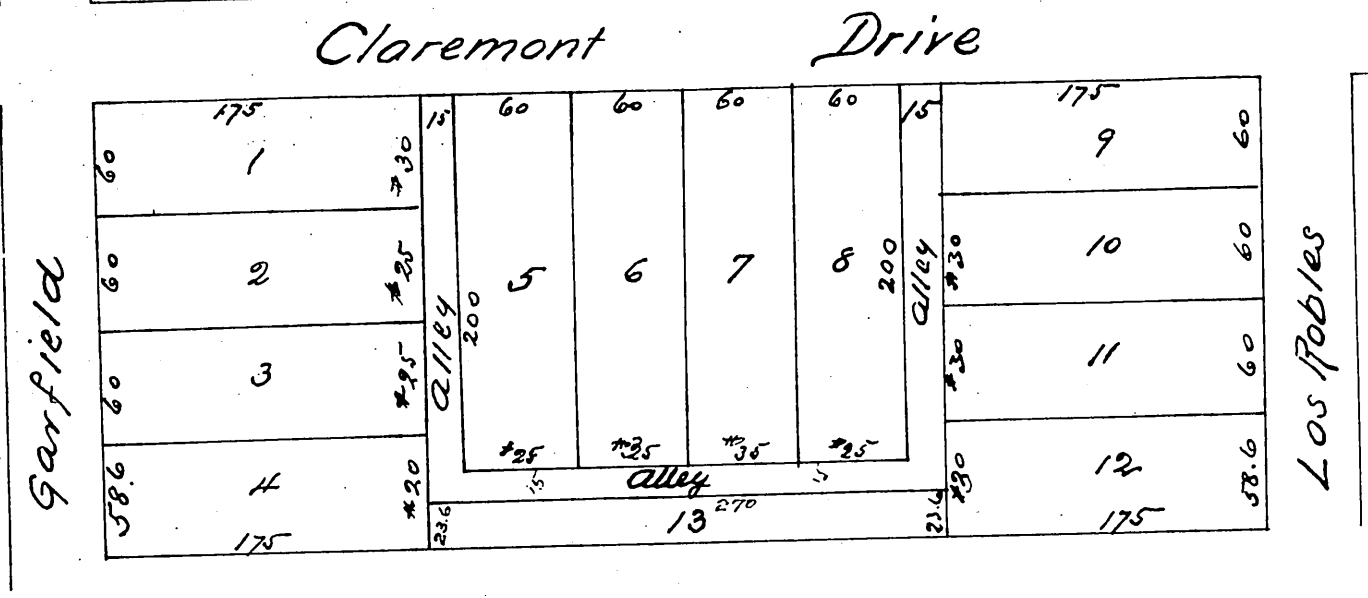
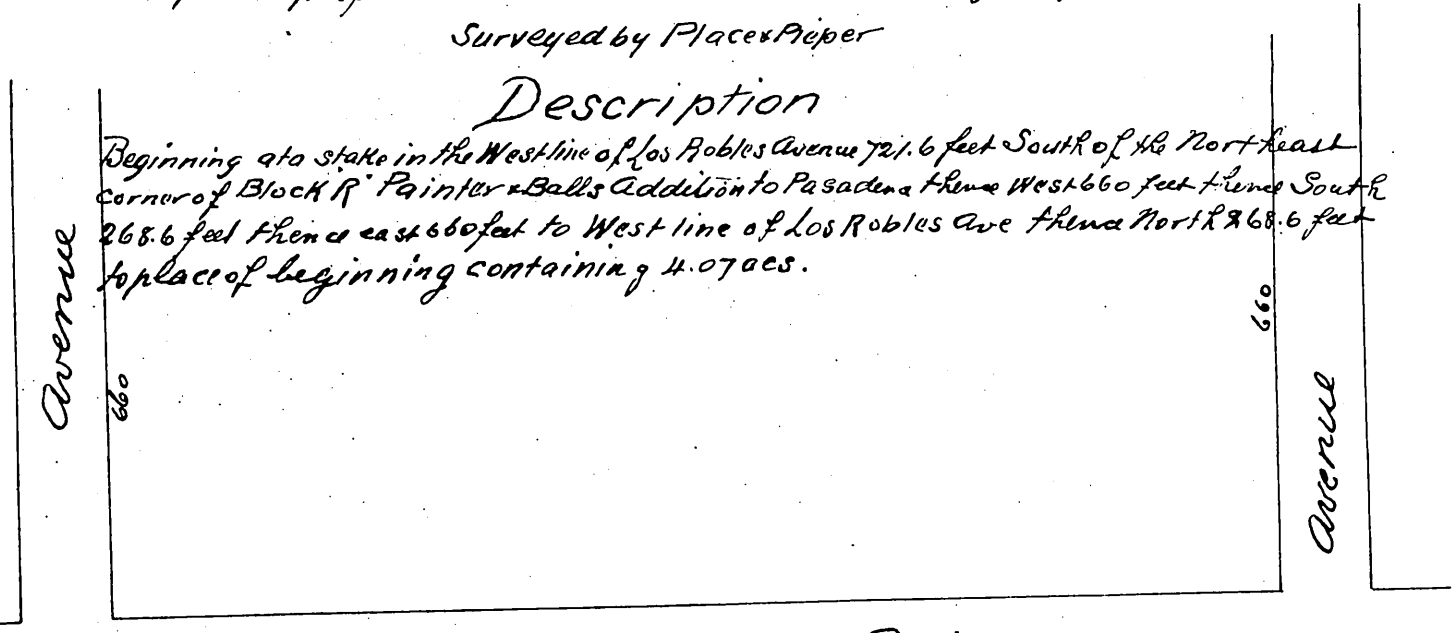


Lewis J. Cowgills Map

of the Resubdivision of a portion of Block R Painter & Balls Addition to Pasadena

as per map of said Addition recorded in Book 4 page 549 Miscellaneous Records
Surveyed by Place & Pieper



A full true and correct copy of the original recorded March 6th 1888 at 1:43 P.M. at request of L. J. Cowgill
 Frank A. Gibson Co Recorder
 by Wm E. Johnston Deputy