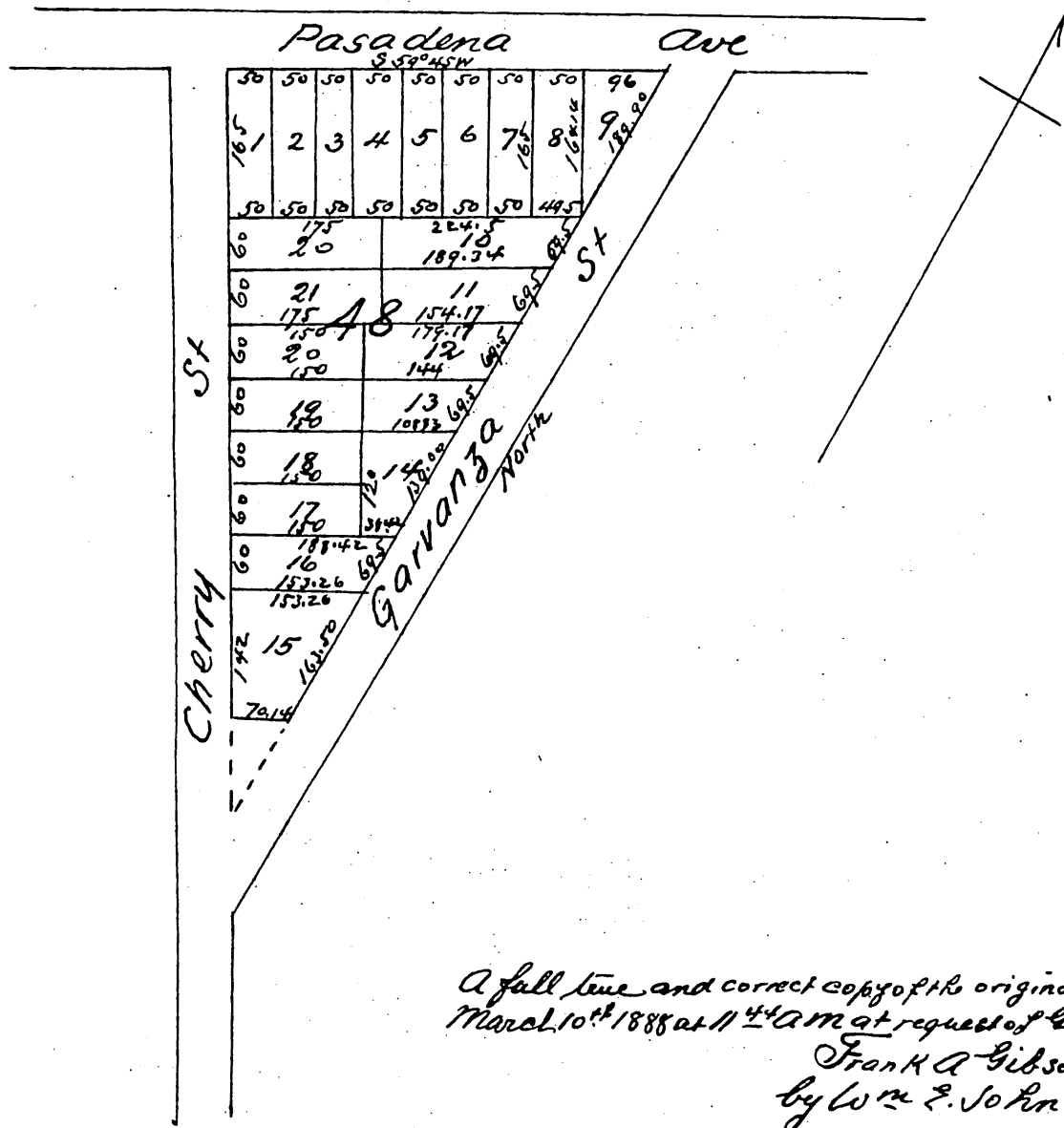


G.W. Morgans
 Map
 of Park
 Block 48 Highland Tract
 made under directions of Ralph Rogers
 in 1886
 Los Angeles County Cal
 Scale 200 feet to one inch



A full true and correct copy of the original recorded
 March 10th 1888 at 11⁴⁴ AM at request of G.W. Morgan
 Frank A. Gibson County Recorder
 by Wm E. Johnston Deputy