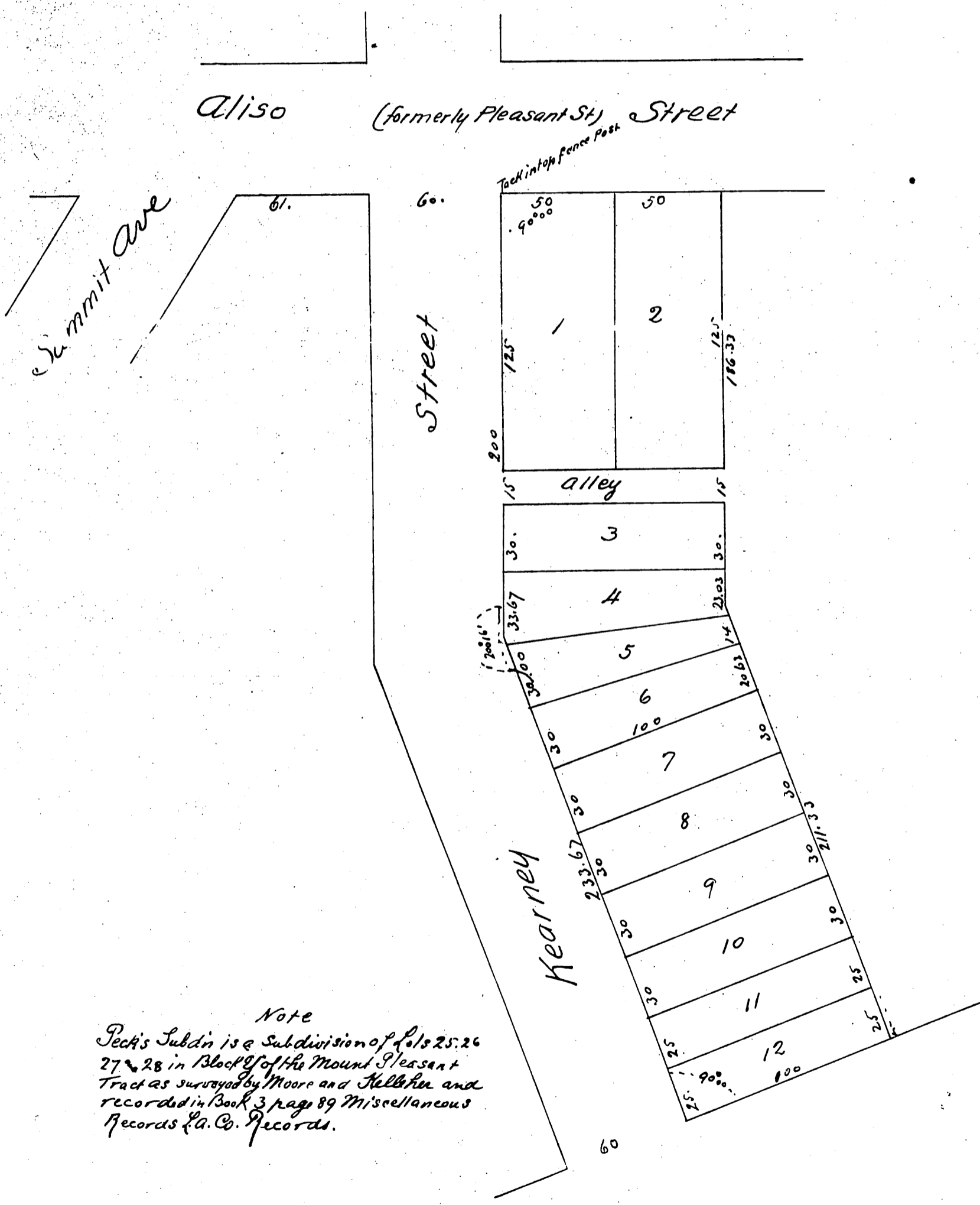


Plat  
of  
Peck's Subdivision  
of Lots 25, 26, 27 and 28 in Blk U Mount Pleasant Tract  
Los Angeles City California  
Surveyed in March 1888 by Geo B. King C.E.  
Scale 50 feet to one inch



Note  
Peck's Subdn is a Subdivision of Lots 25, 26, 27 & 28 in Block U of the Mount Pleasant Tract as surveyed by Moore and Kelleher and recorded in Book 3 page 89 Miscellaneous Records L.A. Co. Records.

a full true and correct copy of the original recorded March 13<sup>th</sup> 1888 at 10:50 AM at request of J. S. Peck  
Frank A. Gibson Co. Recorder  
by Wm E. Johnston Deputy