

White's Subdivision

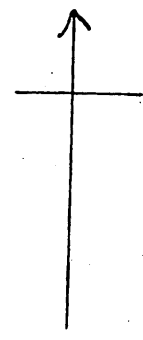
of Lot C Bk 10

Monrovia

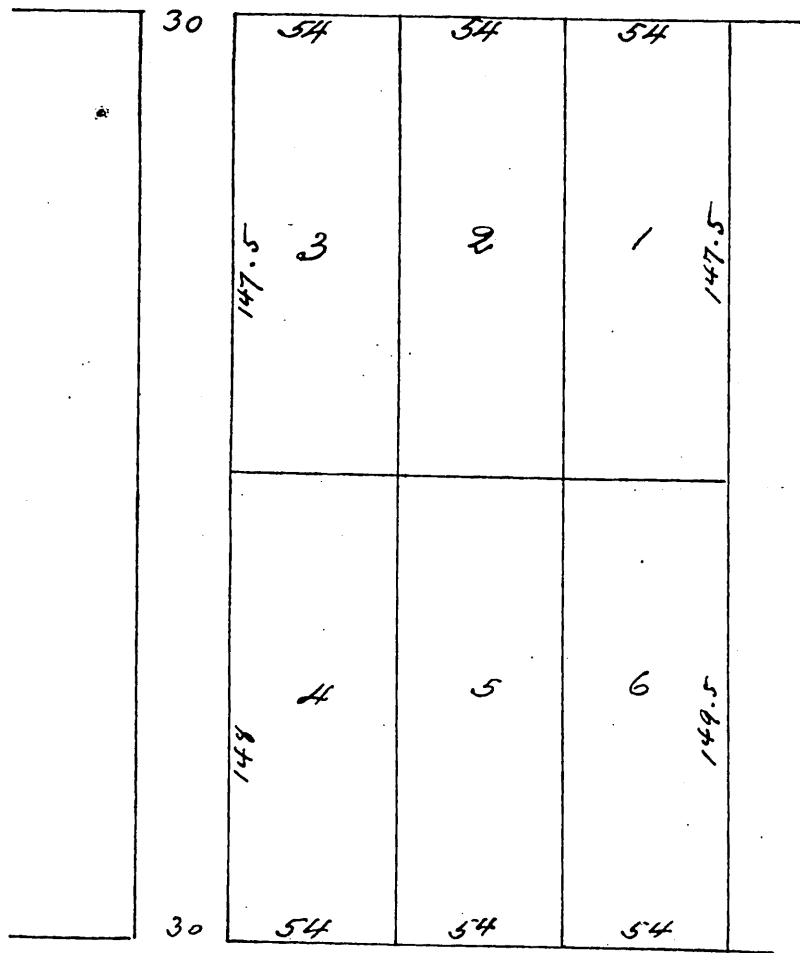
L.A. Co Cal

Surveyed by Charles W. McDonald Monrovia

Scale 40ft = 1 inch



60 Falling Leaf Ave 60



30 Cypress Ave 30

A full true and correct copy of the original recorded
 March 14th 1888 at 42 min past 12 P.M. at request
 of J. J. White & Co (Reduced to 60 feet to one inch)
 Frank A. Gibson Co Recorder
 by Wm. E. Johnston Deputy.