

# Glorietta Heights

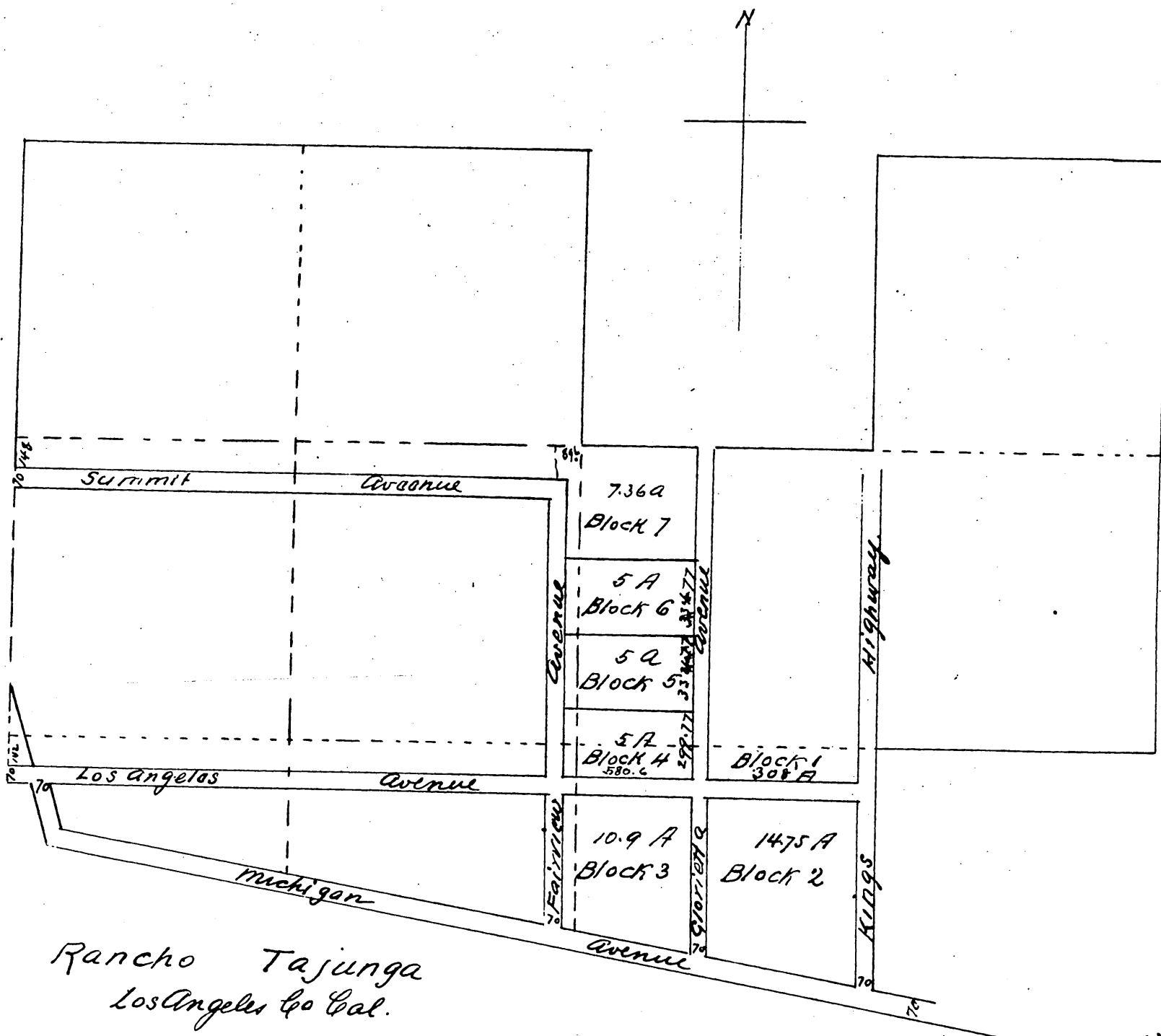
Part of fractional Section 18

T. 2. NR 13W S. 17M

Surveyed Dec 1887

S. A. Langworthy Civil Engineer

Scale 300 feet = 1 inch



Rancho Tajunga  
Los Angeles Co Cal.

A full, true and correct copy of the original (reduced to one third size)  
recorded March 14 1888 at 4:25 P.M. at request of Dexter Gilbert  
and King

Frank A. Gibson Co. Recorder  
by Wm E. Johnston Deputy