

Map of

Victor Berris Subdivision

of Lots 8 and 9 each containing $1\frac{25}{100}$ acre which were a subdivision of Lot 7 containing $33\frac{23}{100}$ acres both of which latter are a part of Griffin's Arroyo Seco Tract as surveyed in years 1883 and 1884 by Charles F. Healey and John E. Jackson a map of which is recorded in Book 22 Miscellaneous Records of Los Angeles County pages 45 and 46 Surveyed January 6th 1888 by John E. Jackson

Scale 50 feet to one inch
 True courses Var $14^{\circ}45'E$
 Distances in feet and inches.

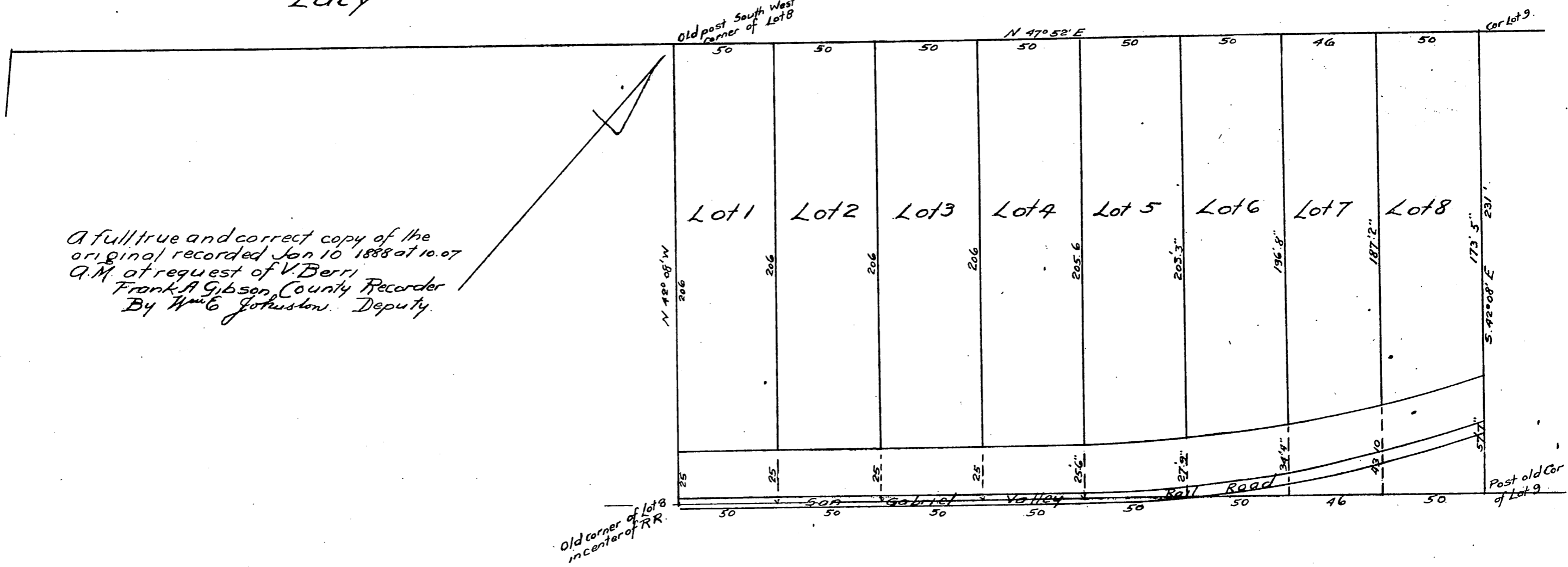
John E. Jackson

Street

Lacy

Avenue

Well



A full true and correct copy of the original recorded Jan 10 1888 at 10.07 A.M. at request of V. Berris
 Frank A. Gibson County Recorder
 By Wm E. Johnston Deputy.

