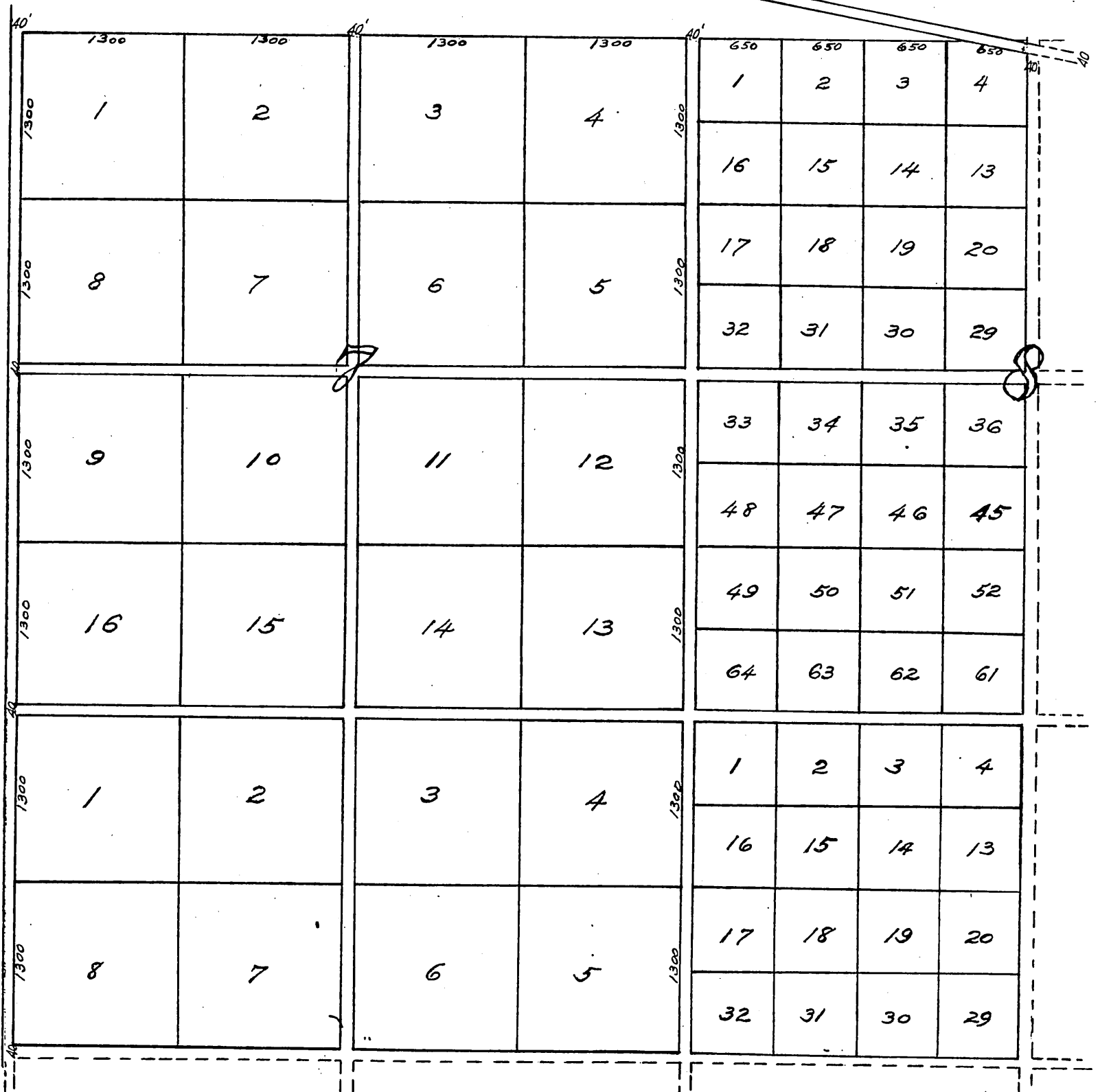
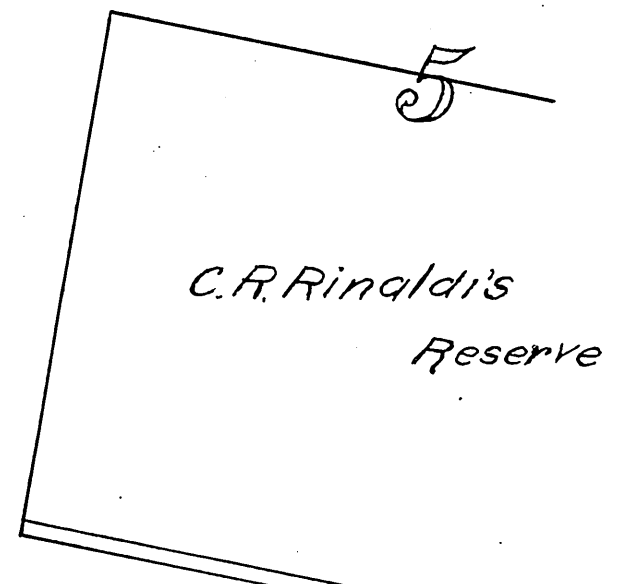


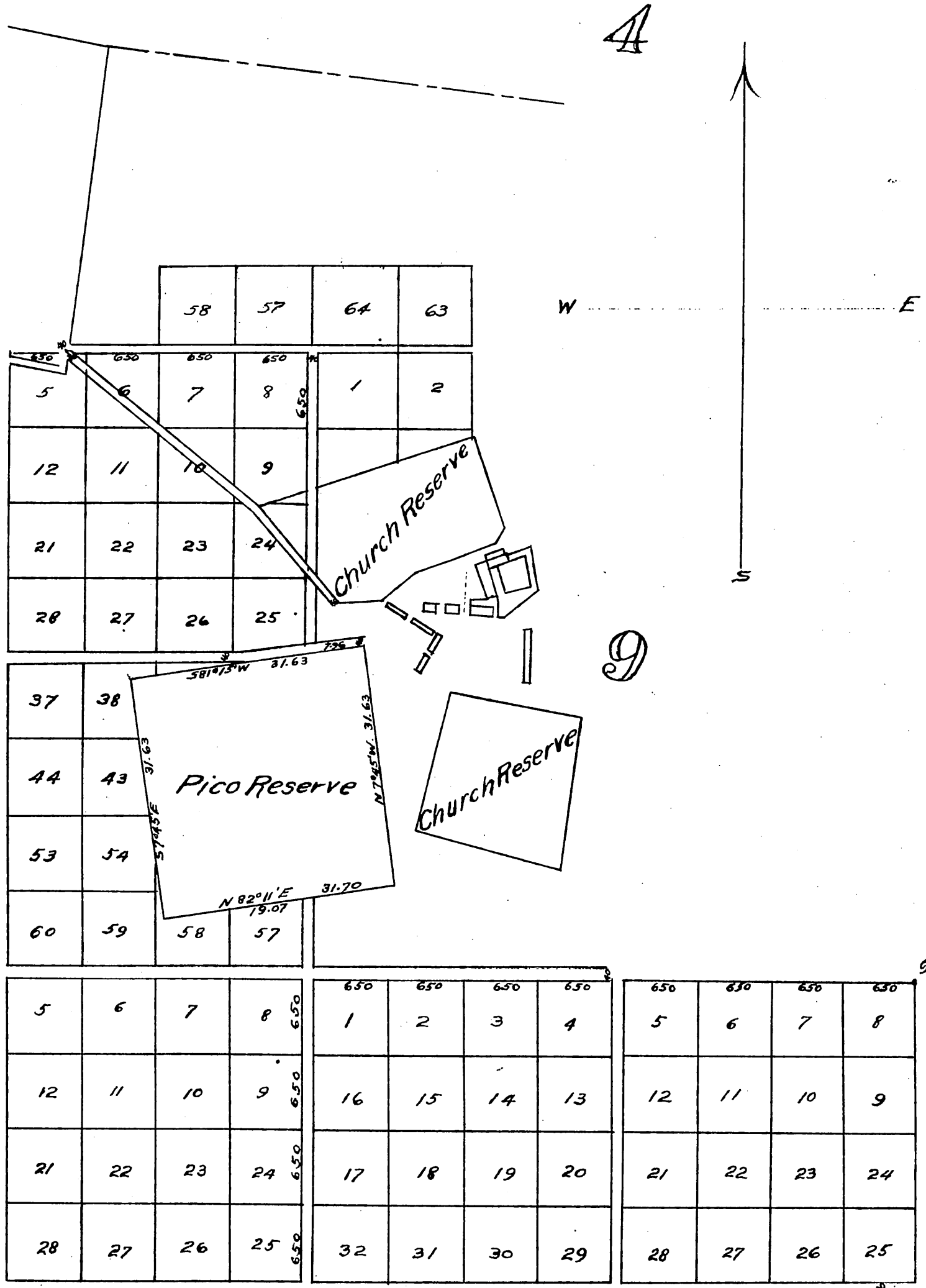


Map
of
Subdivision No. 1
of the property of the
Porter Land & Water Company
Being part of the Rancho
Ex MISSION DE SAN FERNANDO

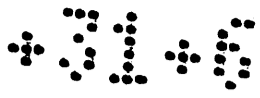
Scale: 1 inch = 600 feet.

Note The "Porter Land and Water Company hereby expressly reserves for itself or assigns the right to go upon said land and to do all acts expedient for the purpose of carrying into effect any system that it or its assigns may devise for the supplying of the Town of San Fernando or the Rancho Ex Mission of San Fernando with water for any purposes whatever; and also reserves all necessary rights of way for flumes, pipes & ditches over and through said land with the right to make all necessary excavations for the purposes aforesaid, doing no unnecessary injury to the land sold but replacing the same as nearly as practicable in the same condition as before such excavations are made or acts are done.





18				17					
1300	9	10	11	12	1300	33	34	35	36
						48	47	46	45
1300	16	15	14	13	1300	49	50	51	52
1300						64	63	62	61
						650	650	650	650
19				20					
1300	1	2	3	4	1300	1	2	T. 24M	
						16	15	14	13
1300	8	7	6	5	1300	17	18	19	20
						32	31	30	29
1300	9	10	11	12	1300	33	34	35	36
						48	47	46	45
1300	16	15	14	13	1300	49	50	51	52
						64	63	62	61
1300	1	2	3	4	1300	1	2	3	4
						16	15	14	13
1300	8	7	6	5	1300	17	18	19	20
						32	31	30	29
21				22					
1300	9	10	11	12	1300	33	34	35	36
						48	47	46	45
1300	16	15	14	13	1300	49	50	51	52
						64	63	62	61
1300						650	650	650	650



37	38	39	40	650	33	34	35	36	37	38	39	396
44	43	42	41	650	48	47	46	45	44	43	442.2	
53	54	55	56	650	49	50	51	52	53	54	157.8	
60	59	58	57	650	64	63	62	61	60	59	198	
650	650	650	650		650	650	650	650	650	650	15.8	
R. 15 W. 7				8	650	1	2	3	4	5	6	
12	11	10	9	650	16	15	14	13	12	11	57.48	
21	22	23	24	650	17	18	19	20	21		244	
28	27	26	25	650	32	31	30	29	28		594	
37	38	39	40	650	33	34	35	36	37		54.78	
44	43	42	41	650	48	47	46	45	44		54.12	
53	54	55	56	650	49	50	51	52	53		495	
60	59	58	57	650	64	63	62	61	60		44.88	
650	650	650	650		650	650	650	650	650		310.2	
5	6	7	8	650	1	2	3	4			646.8	
12	11	10	9	650	16	15	14				349.8	
21	22	23	24	650	17	18	19				343.2	
28	27	26	25	650	32	31	30				330	
37	38	39	40	650	33	34	35				272.8	
44	43	42	41	650	48	47	46				310.2	
53	54	55	56	650	49	50	51				194.8	
60	59	58	57	650	64	63	62				184.8	
650	650	650	650		650	650	650				247	

16

21

28

A full, true and correct copy of the original (reduced to 2/3 size) recorded Jan. 10 1888 at 11.10 AM at request of John B. Baskin.
 Frank A. Gibson, County Recorder
 By Wm. E. Johnston, Deputy.