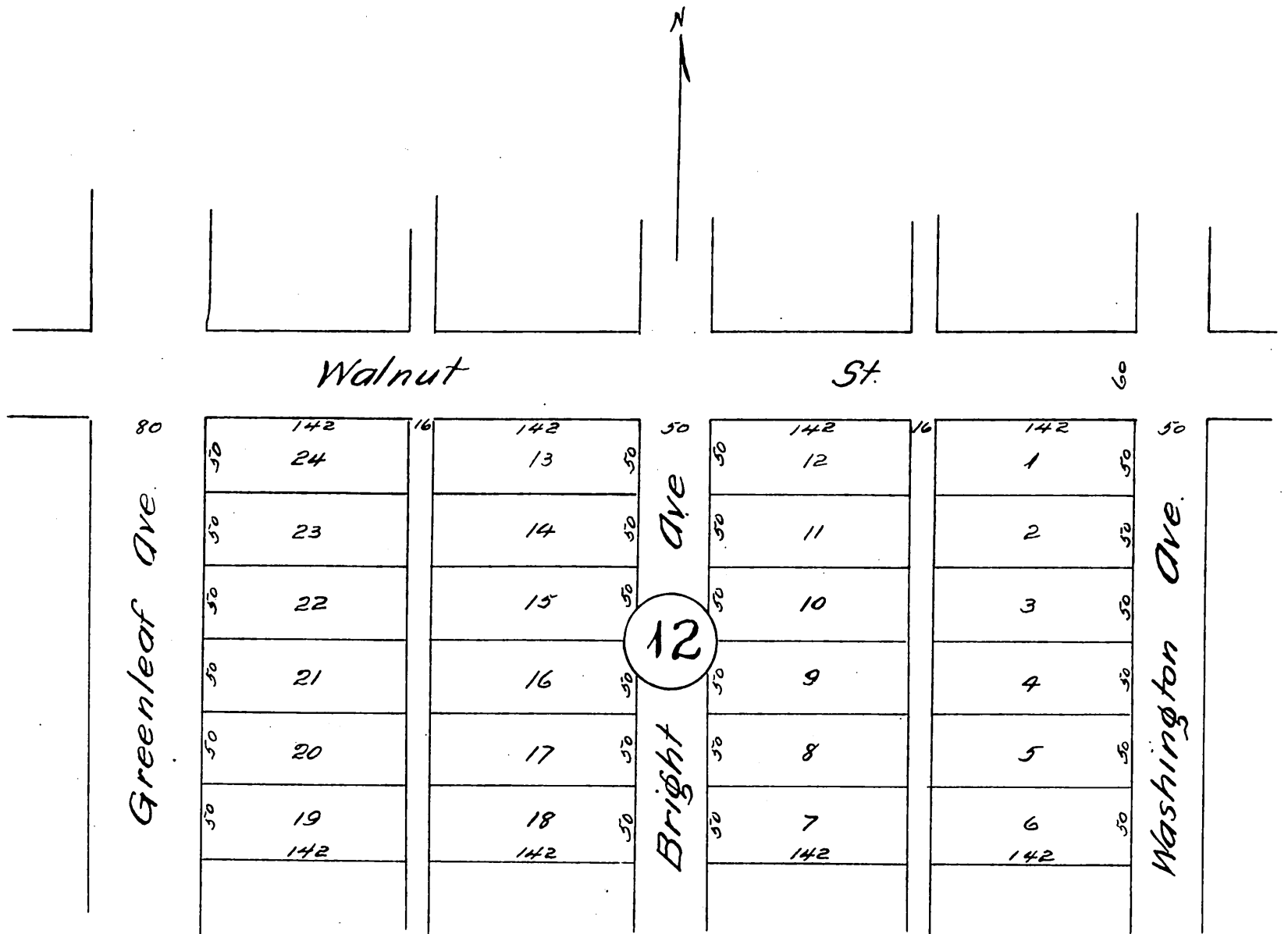


*J. W. Hollingsworth's Addition*  
 to  
**WHITTIER.**

*Being a subdivision of Lot 12 Block J,  
 of the Pickering Land and Water Company's Subdivision  
 of the  
 John M. Thomas Ranch.  
 Los Angeles County Cal.*

*Surveyed Dec 1887 by Jessup Pece & Clappitt, Surveyors.*

*Scale 70 feet to 1 inch.*



*A full true and correct copy of the original  
 (reduced to 100 feet to the inch) recorded  
 Jan 10, 1888 at 2.32 P.M. at request of J. W.  
 Hollingsworth.  
 Frank J. Gibson County Recorder.  
 By W. C. Johnston, Deputy.*