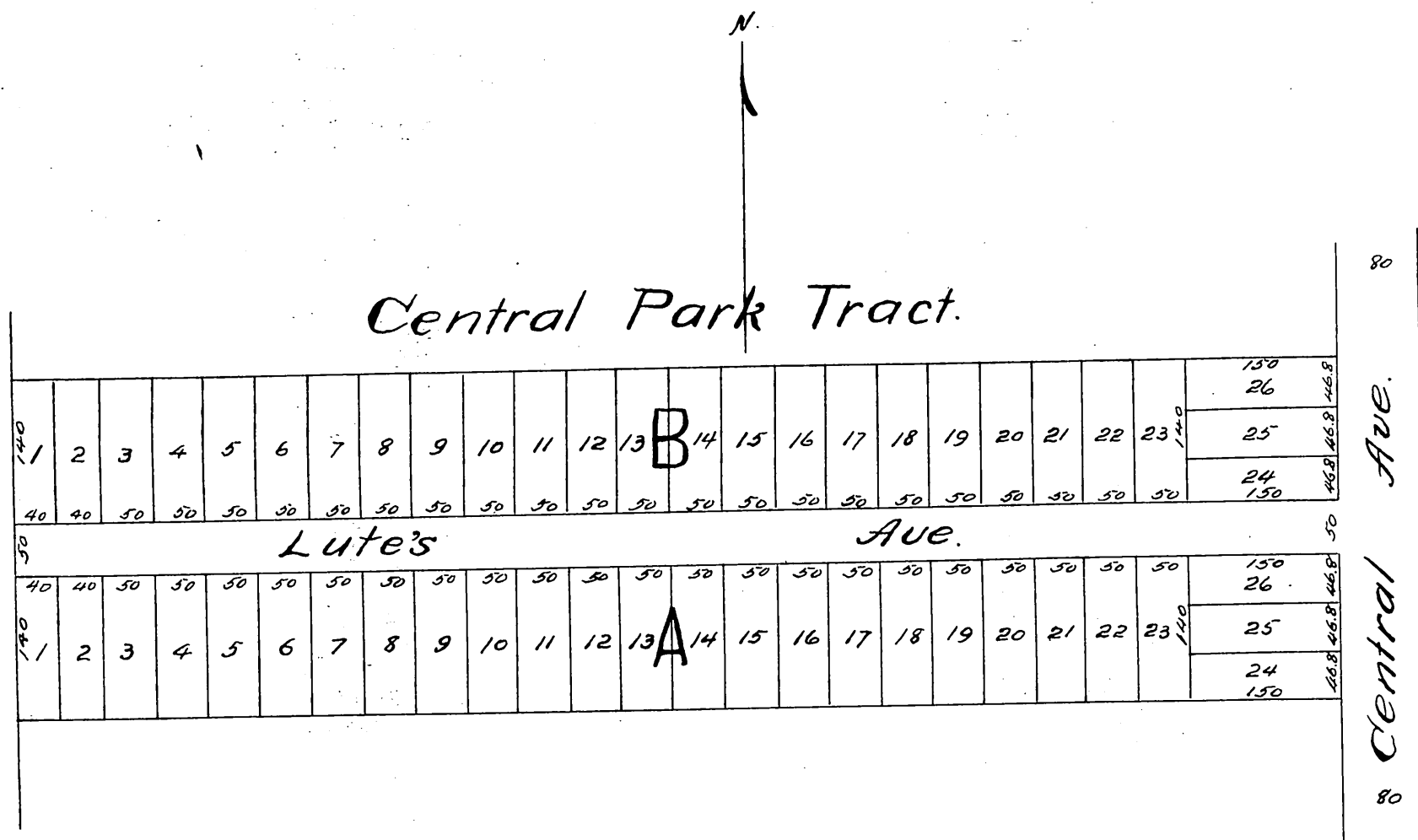


Map
of
C. Lute's Subdivision
of the North 10 acres of the North 1/2 of the
SE 1/4 of the SE 1/4 of Sec. 17, T2 S.R. 13W, S.B.M.
Los Angeles Co.

Scale 100 ft to the inch.



A full, true and correct copy of the original
(reduced to 150 feet to the inch) recorded
Jan 12 1888 at 10.02 AM at request of E
K. Alexander.
Frank A. Gibson, County Recorder.
By W. E. Johnston, Deputy.