

PERHAM'S SUBDIVISION

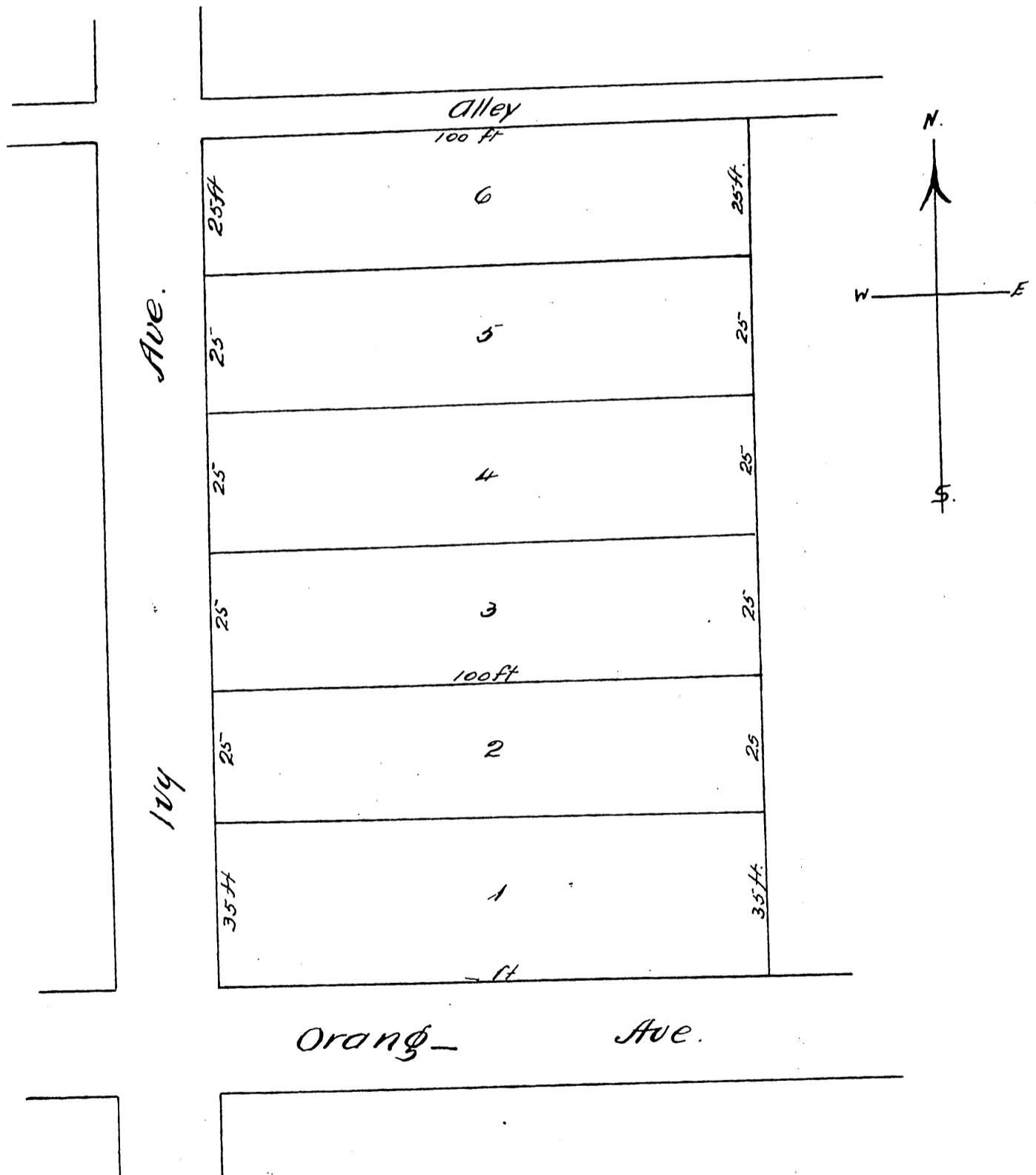
of Lots 13 & 14 Blk. J

MONROVIA

Los Angeles Co. Cal.

Surveyed by J. S. McDonald C.E.

Scale 1 inch = 25 ft.



A full true, and correct copy of the original, recorded Jan 13 1888 at 12:27 PM at request of F. E. Perham.
 Frank O. Gibson County Recorder.
 By Wm C. Johnston Deputy.