

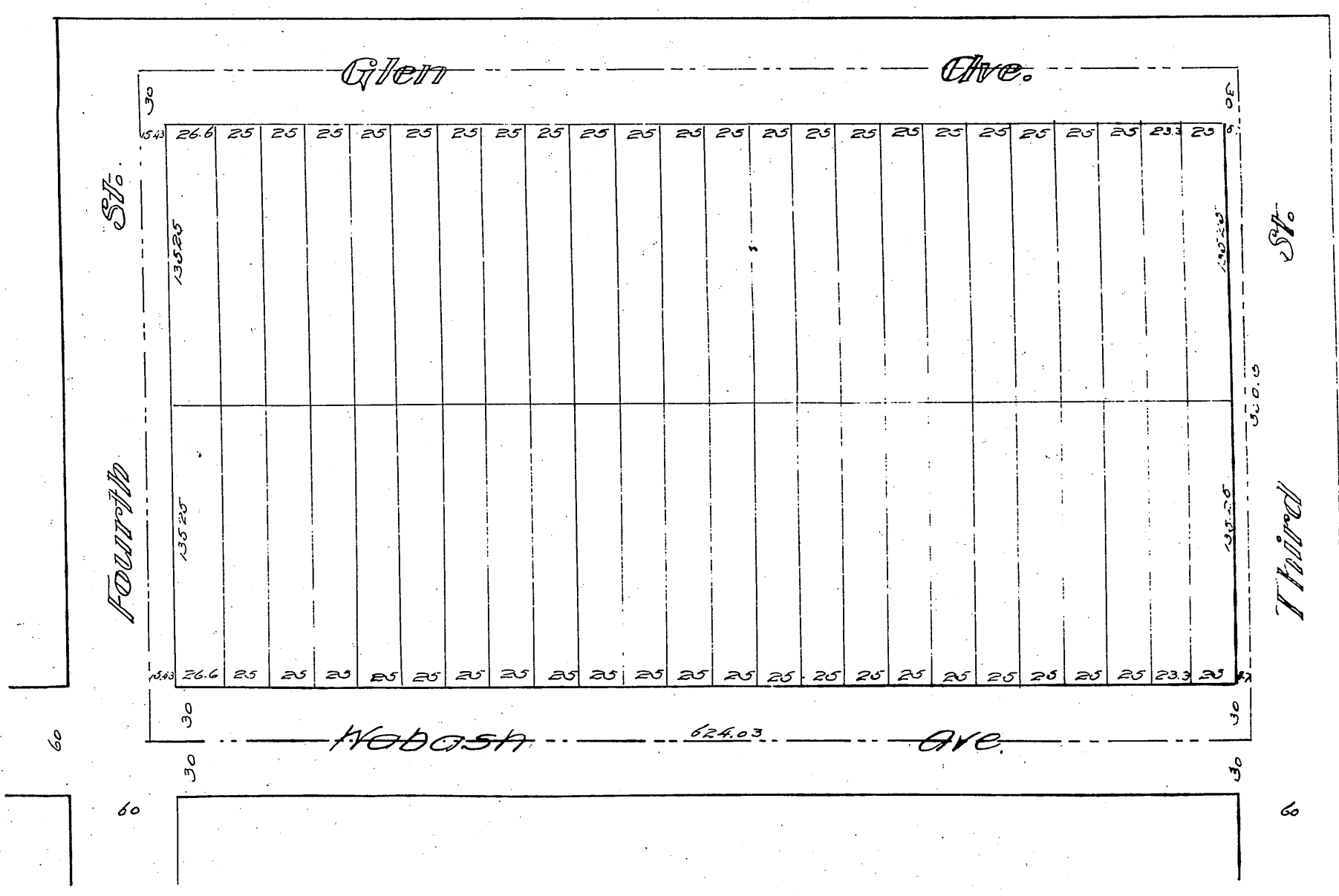
14
MR 31

McCarthy's Subdivision

of Lot 5 of Farm Lot 55 of the Olinda Tract.

— CARLTON, CAL —
IN ORANGE COUNTY
Surveyed Jan. 1888 by Mount & Drummond.

Scale 60 ft = 1 inch.



Recorded at the request of James M. McCarthy
(Reduced to 60 feet per inch) Jan 14, 1888.

14
Carpenter
1888