

MAP of the Francesca Tract

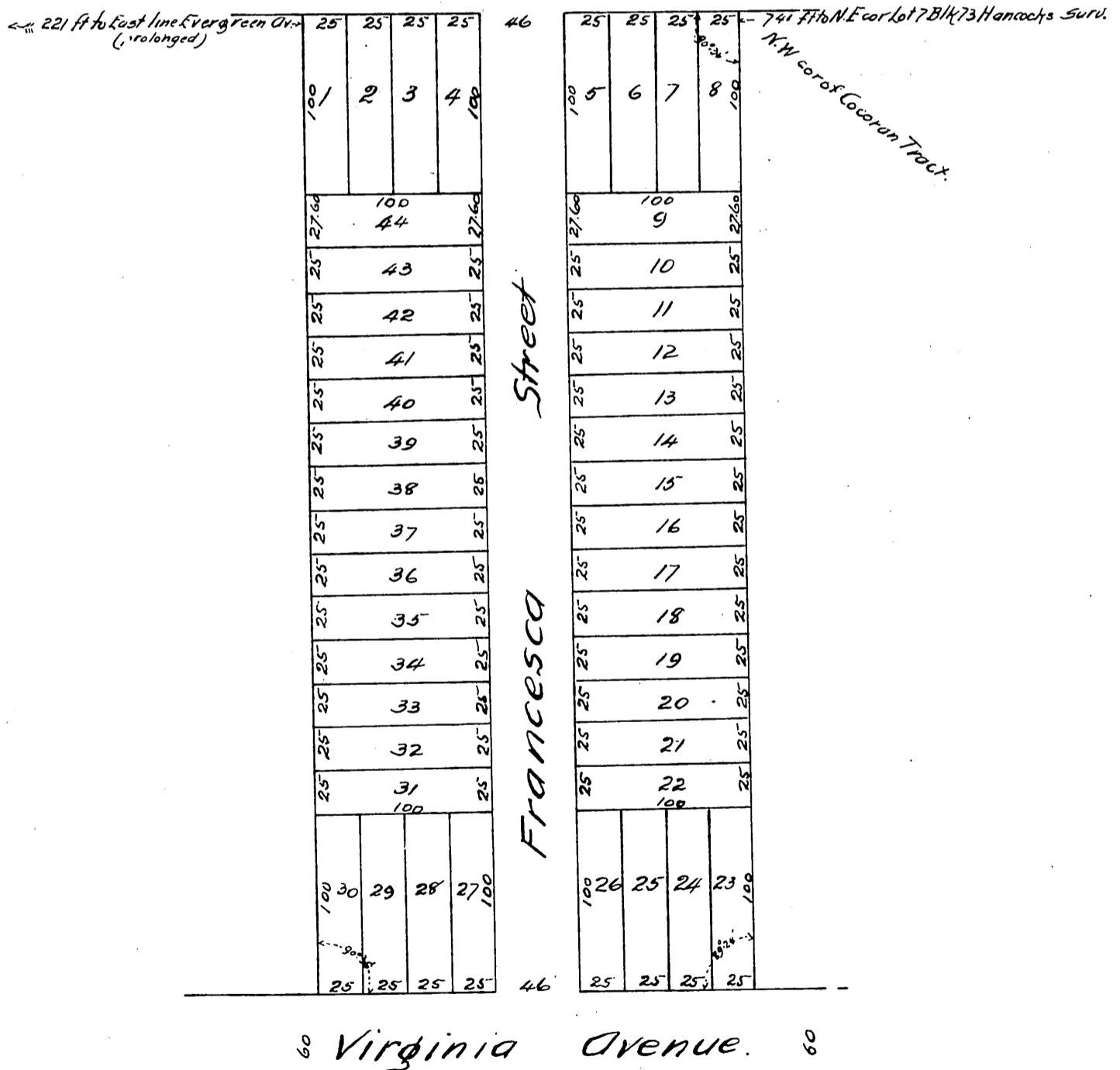
Los Angeles City Cal.

Surveyed at the request of John P. Peck Esq in Dec. 1887

by King & Winston.

Scale 60ft to one inch.

Aliso Ave. Extension.



A full true and correct copy of the original (reduced to 80 feet per inch) recorded Jan 16, 1888 at 12.06 M. at request of J. P. Peck.

Frank T. Gibson County Recorder.
By J. M. Johnston Deputy.