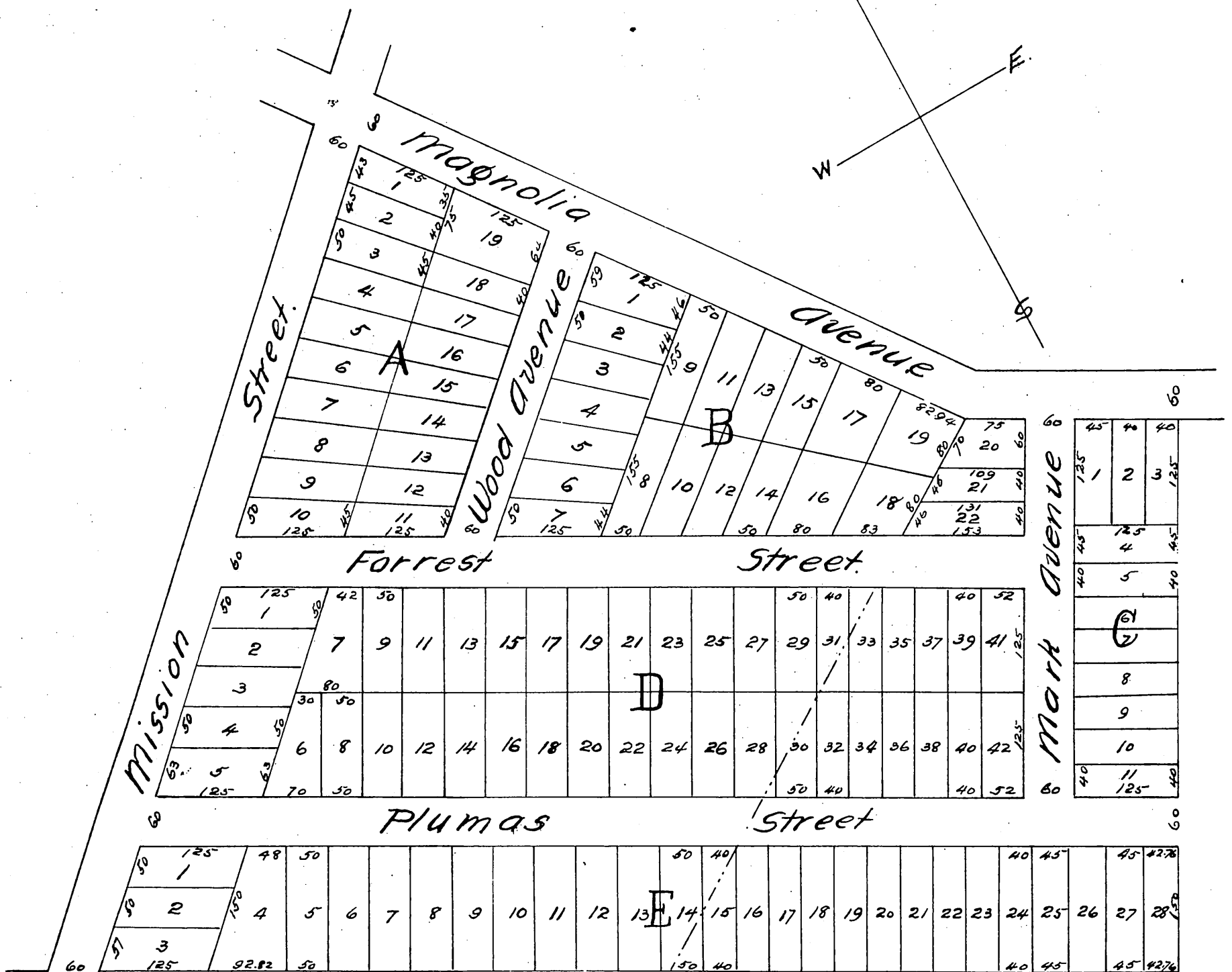


THE GOSS TRACT

Subdivision of Lots 1st & 2nd
of
LACY'S ORANGE SLOPE TRACT.
Los Angeles, California.

S. P. Langworthy, Civil Engineer
Surveyed Nov. 1887
Scale: 60 feet = 1 inch.



A full true and correct copy of the original, reduced to 150 feet per inch, recorded Jan. 27 1888 at 11.08 A.M. at request of L. N. Breed.

Frank A. Gibson County Recorder.
By Wm. E. Johnston, Deputy.