

IN ORANGE COUNTY  
*THE WEST TRACT*

near

SANTA ANA,  
 Los Angeles County, Cal.

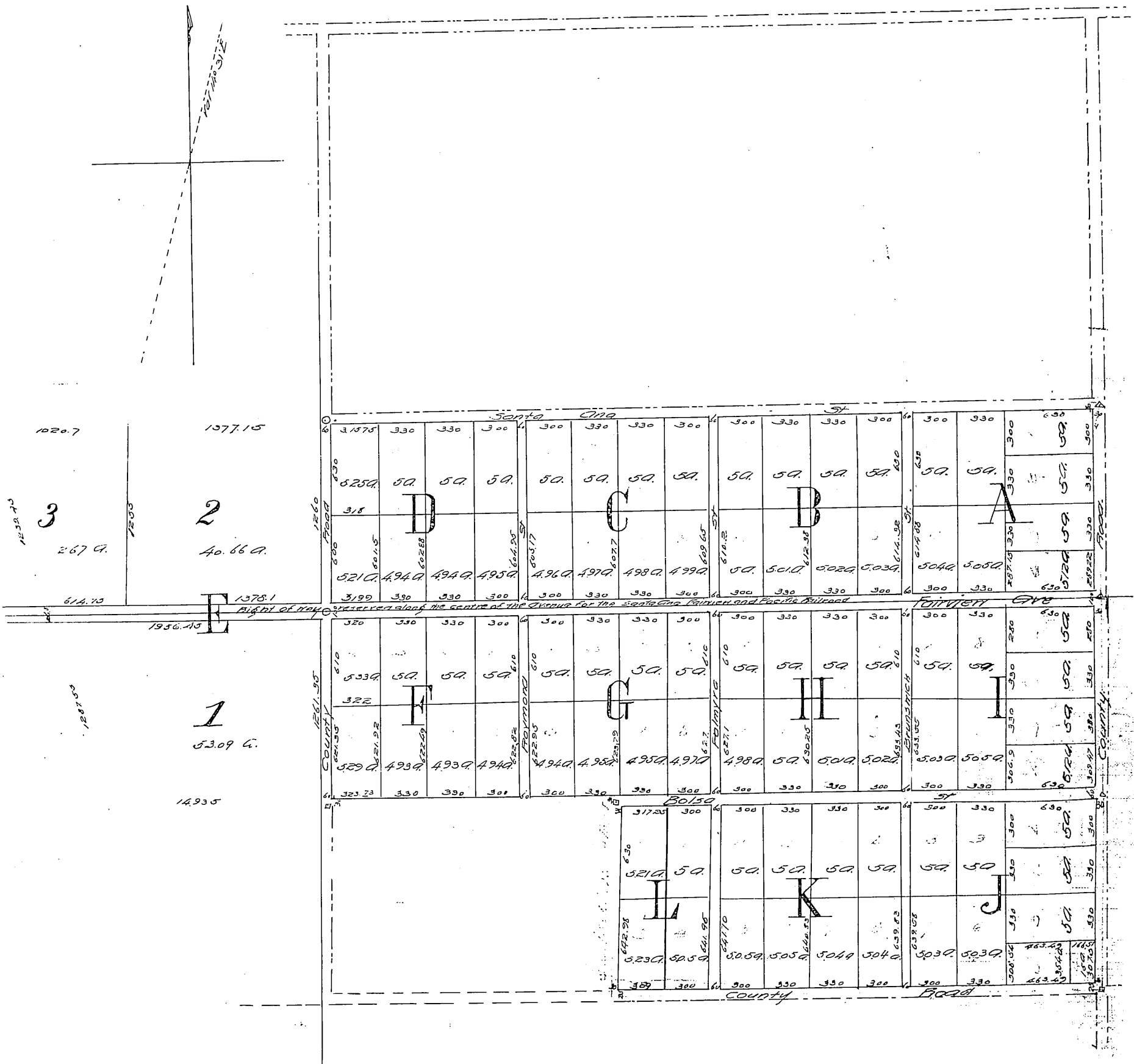
Surveyed and platted October 1887 by E. E. Keech, C. E.

Scale 200 ft. to 1 inch

Description

of that portion of the Rio Santiago de Santa Ana set apart to Ascension S. De Mott by decree of partition in the suit Stearns et al. vs. Cota et al, Case No 1192 in the District Court of the 17th Judicial District entered in Liber B of Judgments pages 410-433. all that tract described as Lots 3, 4, 5 on a map recorded in Liber 31 of Deeds page 193 except that portion of Lot 5 conveyed by J. S. Conner to J. H. Fruit and C. H. Brown by deed recorded in Liber 52 of Deeds page 231 and that portion of said lot conveyed by said J. S. Conner to Jonathan Harman by deed recorded in Liber 58 of Deeds page 620

- = Stone corners
- △ = Iron "
- = Wood "



Recorded at request of Gardner T. May Jr  
 Jan 27, 1888. (Reduced to 1/4 size)