

Plat

showing the subdivision of Block B

OF

THE PALMS

situated in the

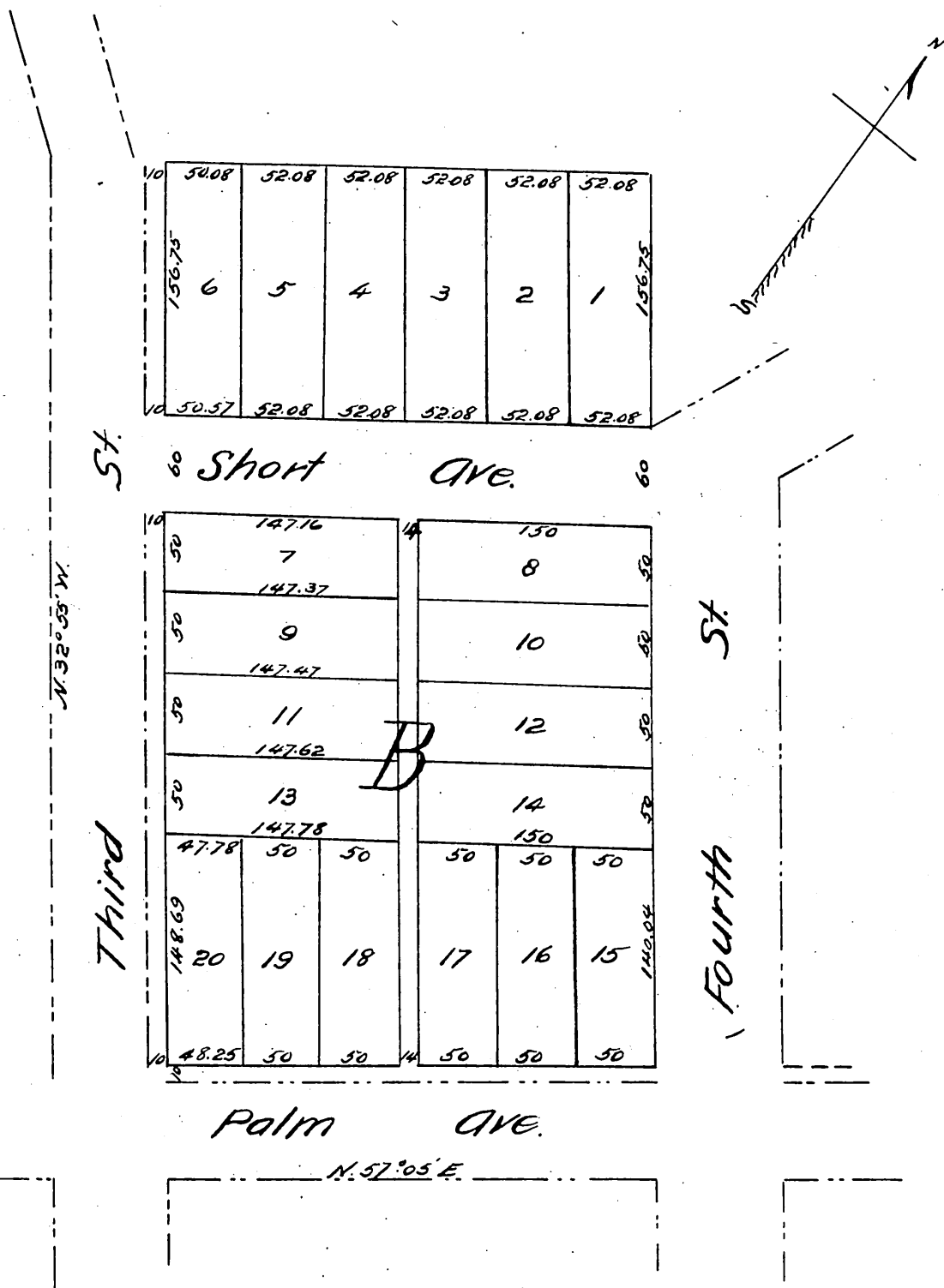
Rancho La Bazona,

in the County of Los Angeles & State of California.

Surveyed by John T. Halsted, Civil Engr.

Jan. 1888.

Scale one inch = 100 feet.



A full, true and correct copy of the original recorded Feb. 2. 1888 at 9.30 A.M. at request of Geo. H. Beach.
 Frank A. Gibson, County Recorder.
 By W. E. Coluston, Deputy.