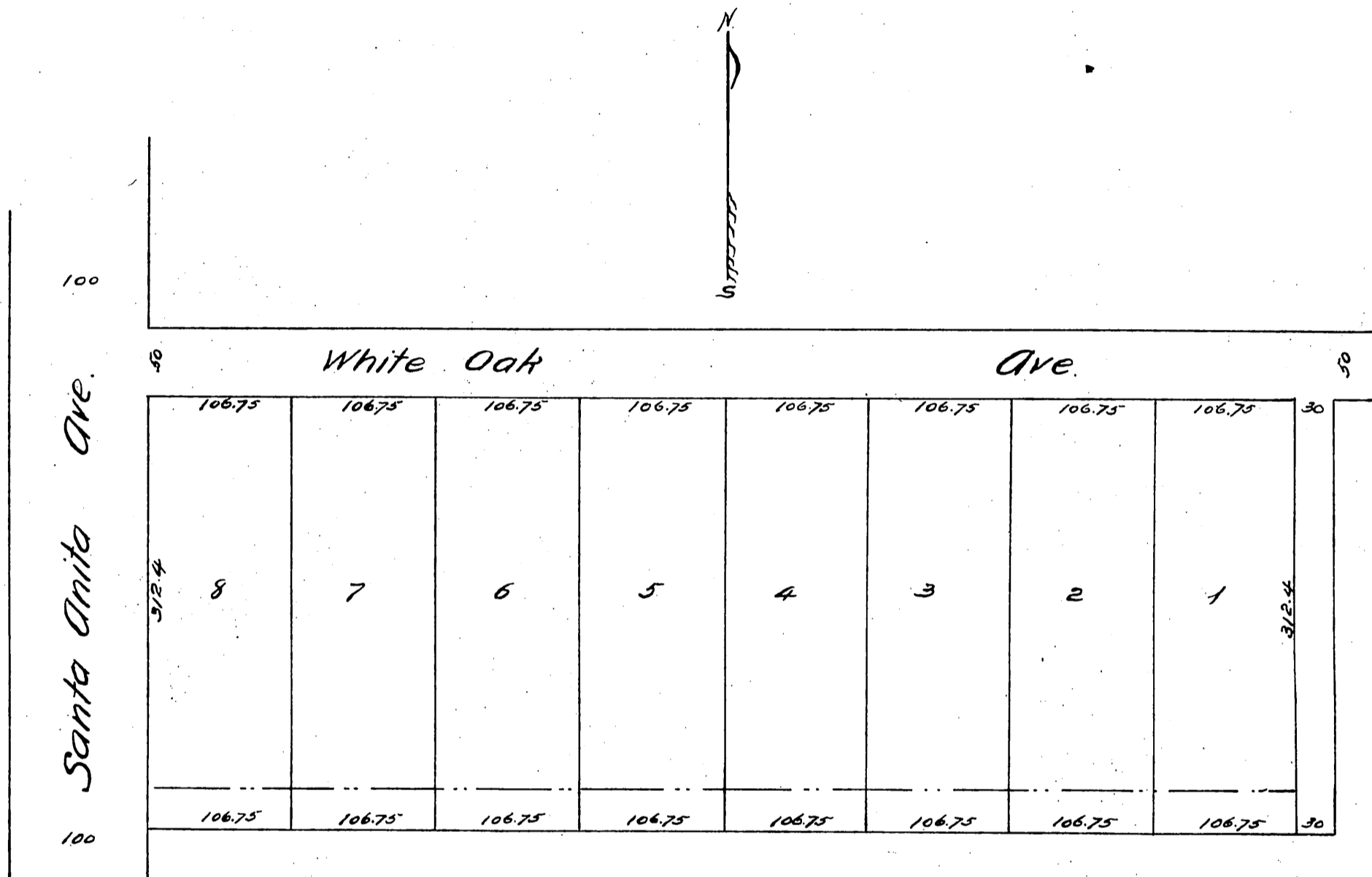


C. B. Clapp's Subdivision
 of Lot 14 Blk 89 Tp 1 N. R 11 W.
 Santa Anita Rancho,
 Los Angeles County Cal.

Surveyed by Charters I. McDonald, Morrovia.

Scale 100ft = 1 inch.



A full true and correct copy of the original, recorded Feb. 21 1888 at 11.580 AM.
 at request of C. B. Clapp.
 Frank A. Gibson, County Recorder.
 By Wm. E. Johnston Deputy.