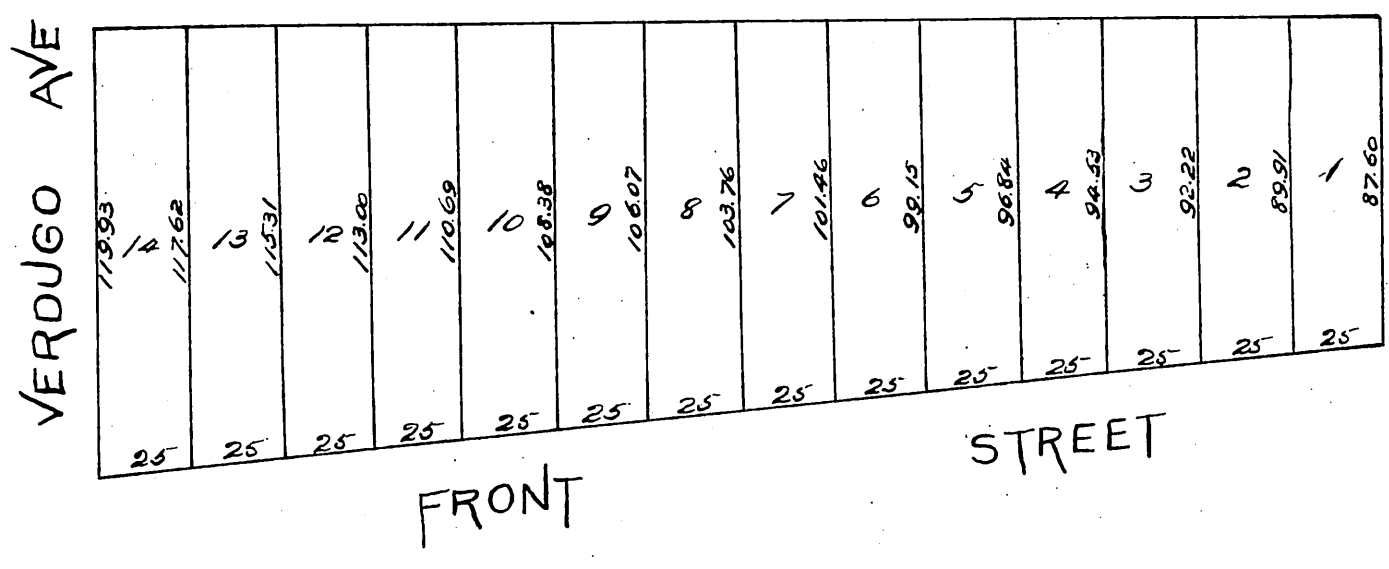


Albee & Pugh's Subdivision
 of Lot 18 Block 57.
 of the Town of
BURBANK
 Los Angeles Co. Cal.
 Scale 50 ft = 1 inch.



A full true and correct copy of
 the original, recorded Feb 2, 1888
 at 12.13 M. at request of Albee & Pugh.
 Francis A. Gibson, County Recorder.
 By Wm. E. Johnston, Deputy.