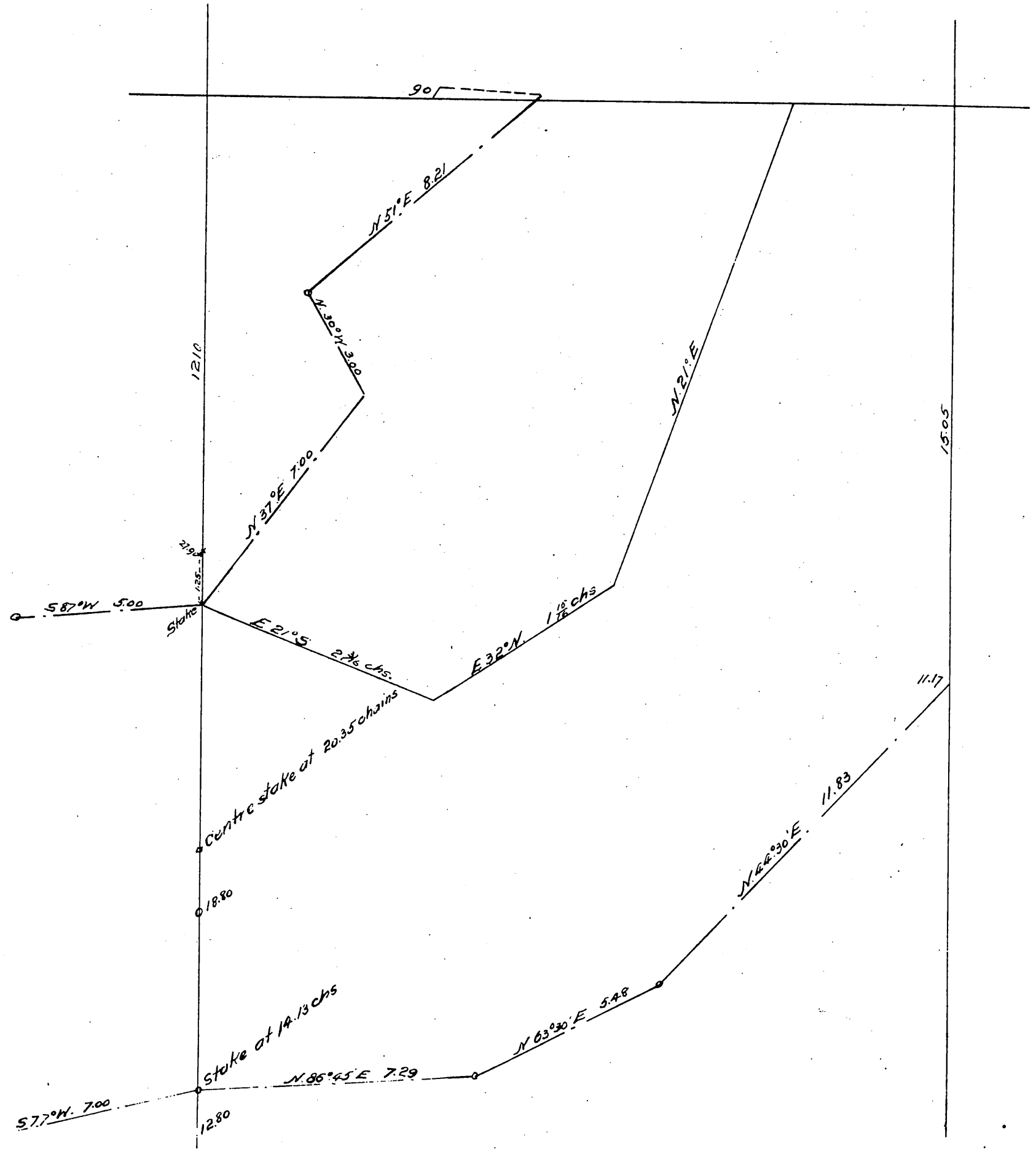


A correct copy from map  
 of  
 E 1/2 of SE 1/4 of Sec 33 T 2 N. R. 12 W. A.P. Street Sur.  
 Jan 11. 1888  
 Scale 3 chs. per inch.

J. W. Smith. 28 d. Aug. At Feb 2. 1888



A full true and correct copy of the  
 original, recorded Feb 2. 1888 at 4.03  
 PM at request of Henry Elms.  
 Frank A. Gibson County Recorder.  
 By Wm C. Johnston Deputy.