

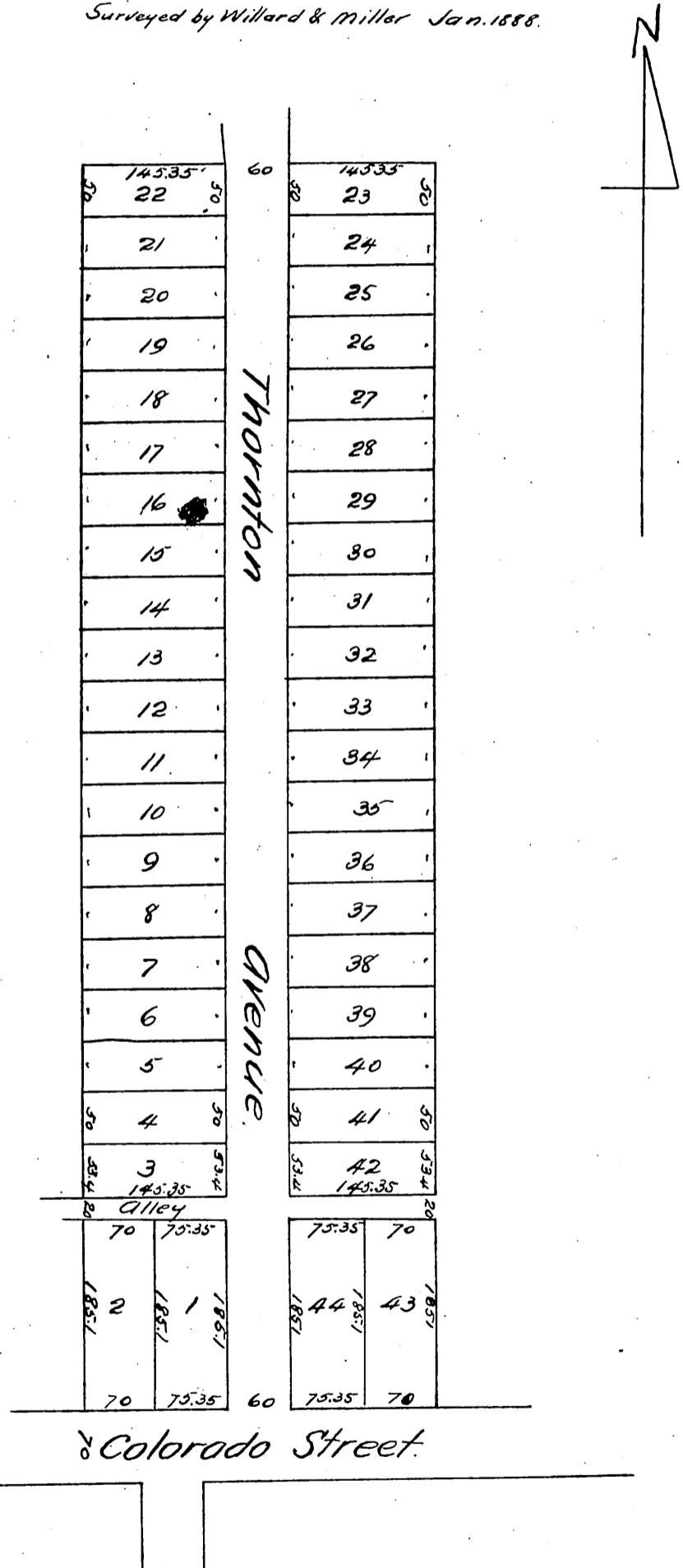
# Map of the Ferry Subdivision

Being a subdivision of a part of the Grogan Tract  
as recorded in Book 327, page 158 of Deeds of Los Angeles Co. Cal.

PASADENA, CAL.

Scale 80 feet = 1 inch.

Surveyed by Willard & Miller Jan. 1888.



A full true and correct copy of the original reduced to 150 feet to one inch, recorded February 2 1888 at 4<sup>23</sup> P.M. at request of J.W. Forsinger.

Frank A. Gibson, Co. Recorder.  
by Wm. E. Johnston, Deputy.