

# Map of the Soto Street Tract,

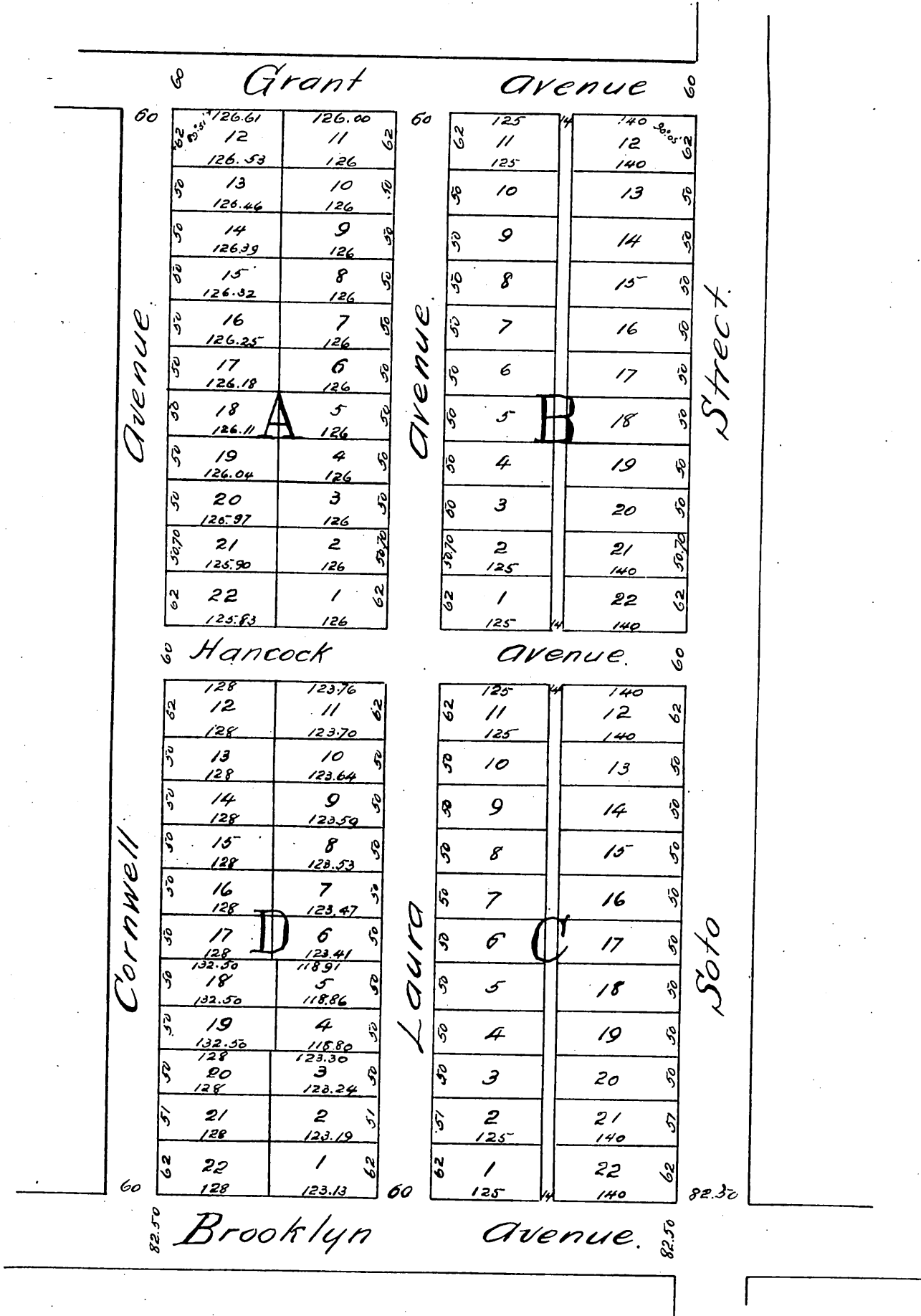
City of Los Angeles, Cal.

Subdivided at the request of Charles Charnock.

by G.B. King in

January 1888

Scale 100ft to one inch.



Note.  
The Soto St. Tract is Charles Charnock's subdivision of the East half of Lot 5 Block 61 Hancock's Survey in the City of Los Angeles.  
Chas. Charnock's first subd. is recorded in Book 9 page 18 Misc. Rec.

A full true and correct copy of the original (reduced to 150 feet to 1 inch) recorded Feb 4, 1888 at 11<sup>30</sup> AM.  
at request of Chas. Charnock  
Frank A. Gibson, Co Recorder  
by Wm. E. Johnston, Deputy