

MAP

of the Resubdivision of a portion of the Olinda Tract

Los Angeles Co, Cal.

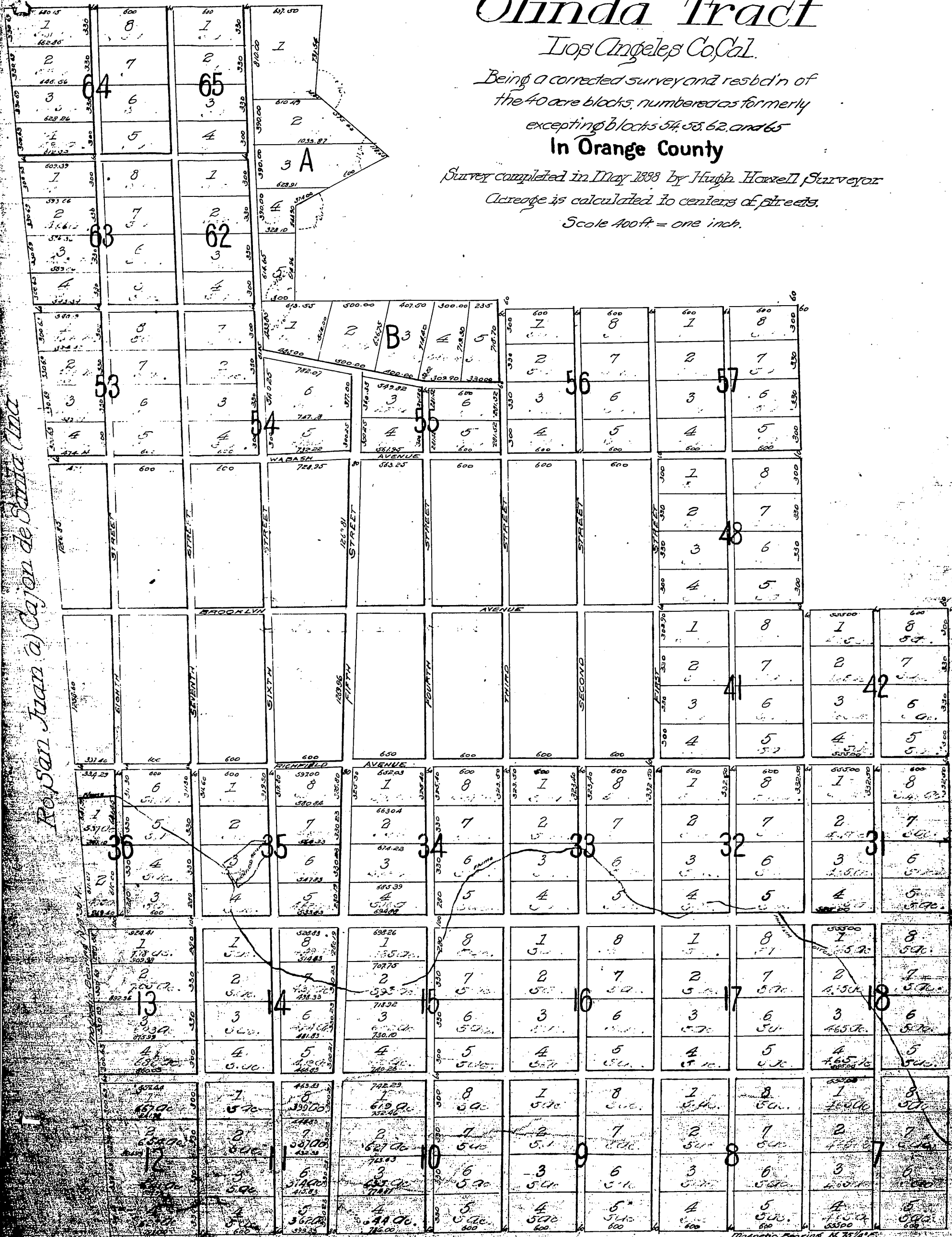
Being a corrected survey and resubd'n of
the 40 acre blocks, numbered as formerly
excepting blocks 54, 55, 62, and 65

In Orange County

Survey completed in May 1888 by Hugh Howell Surveyor

Acres are calculated to centers of streets.

Scale 400ft. = one inch.



Re San Juan (a) Cajon de Santa Ana

Magnetic Bearing N 75 1/4 E