



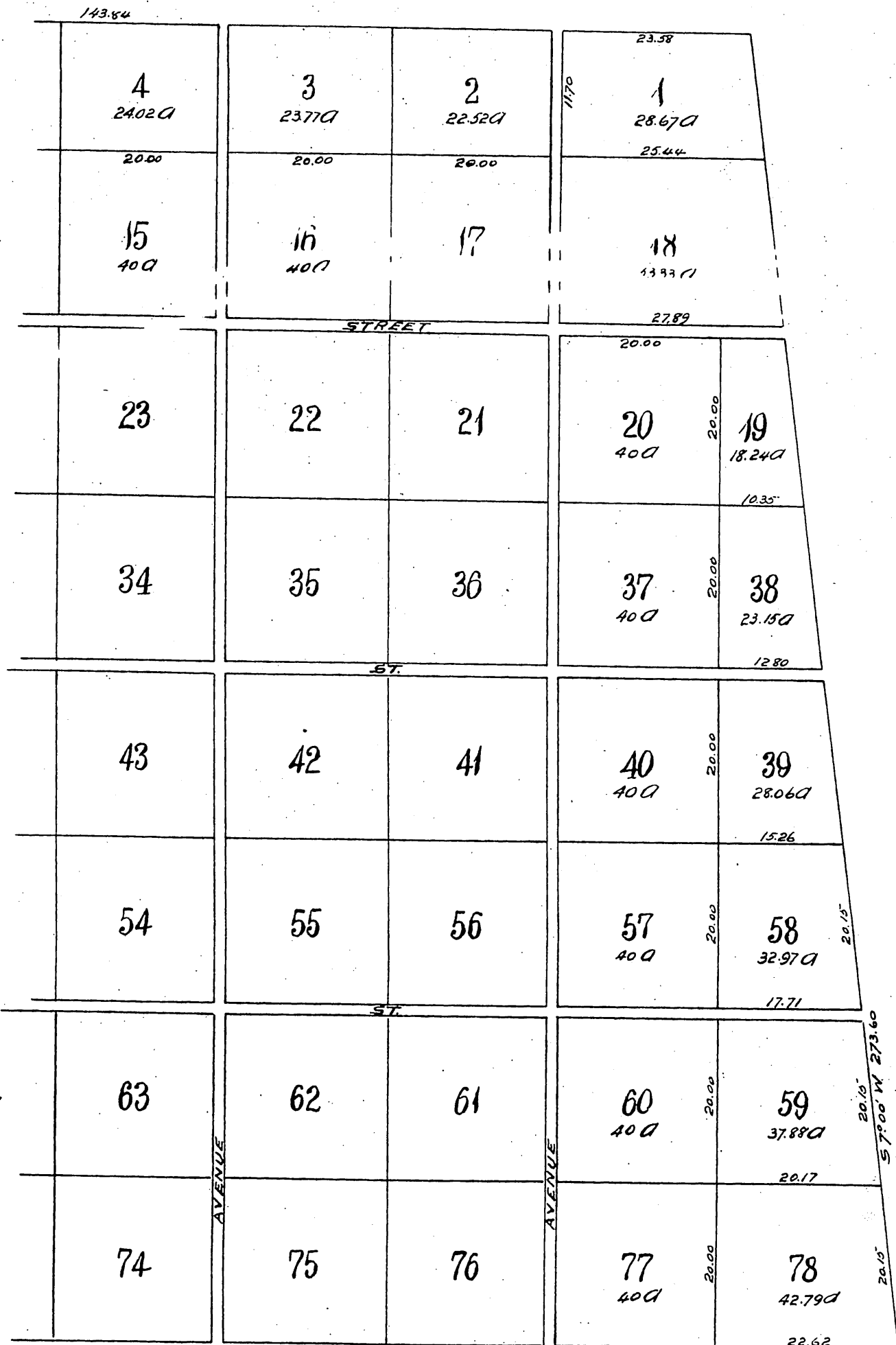
Property
of the
LANKERSHIM RANCH
Land & Water Co

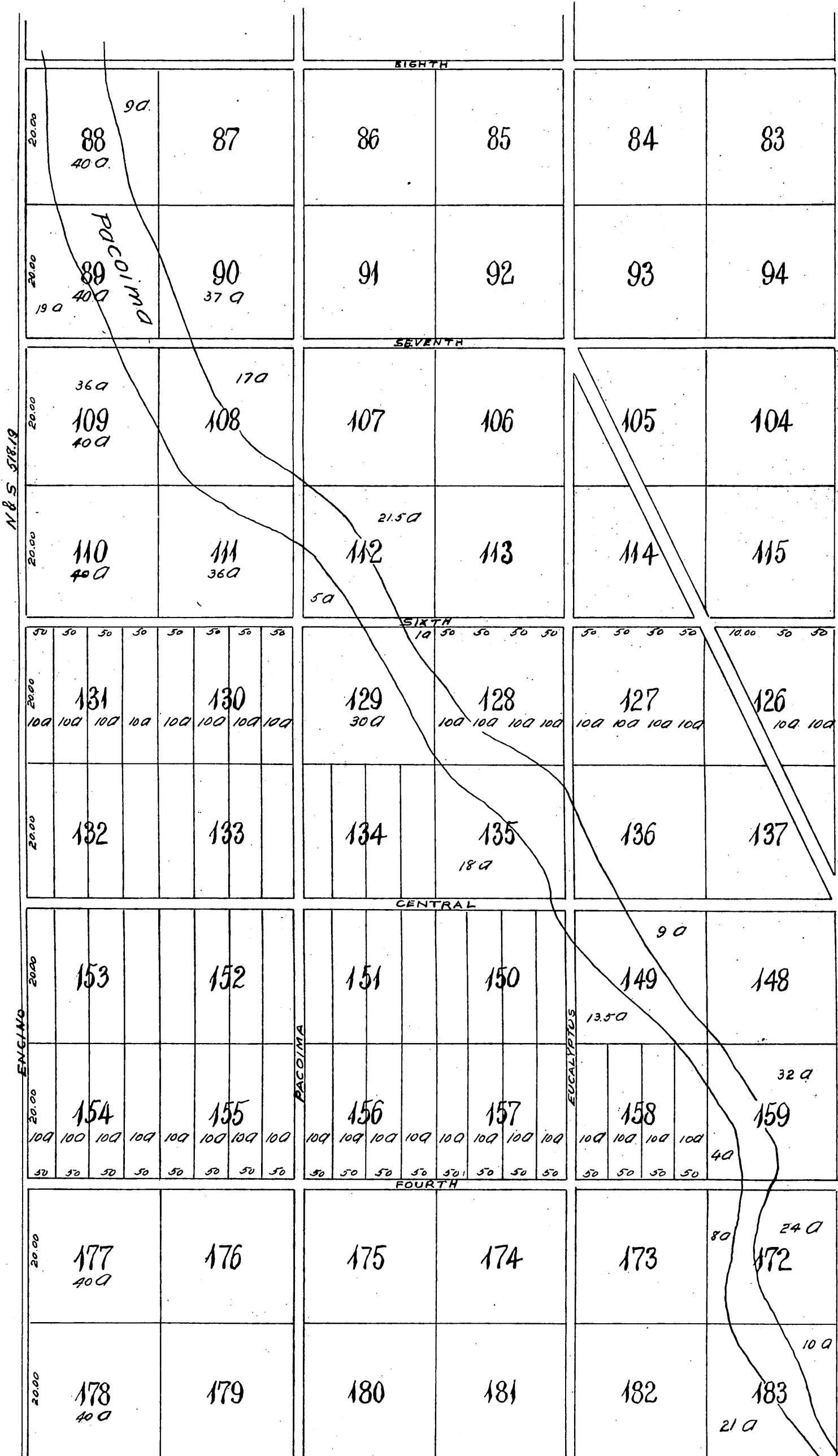
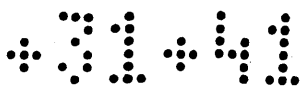
Being the East 12,000 acres of the South
half of the Rancho Ex Mission of San Fer-
nando, Los Angeles Co California.

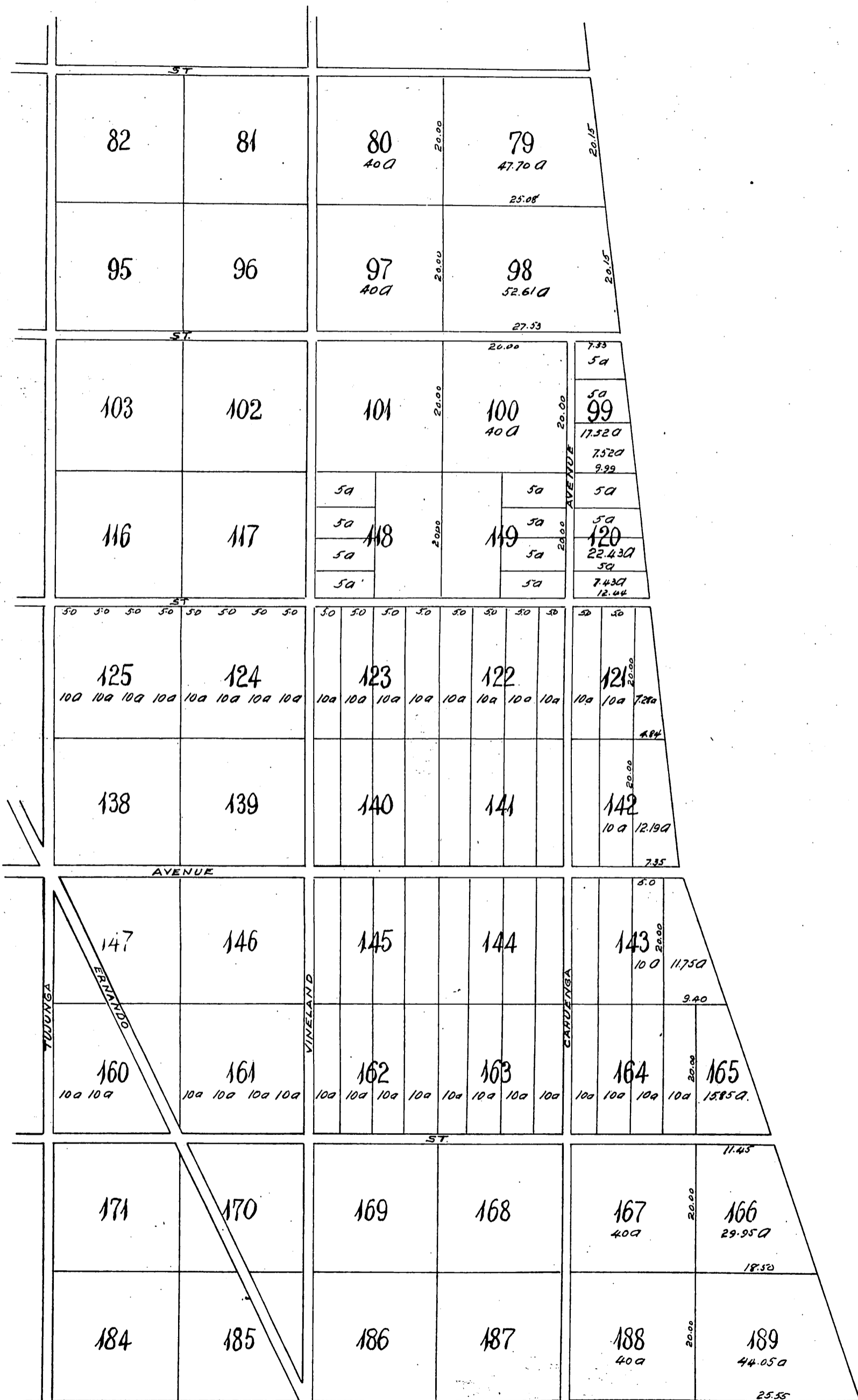
Surveyed Apr. 1888 by E.G. Jones.

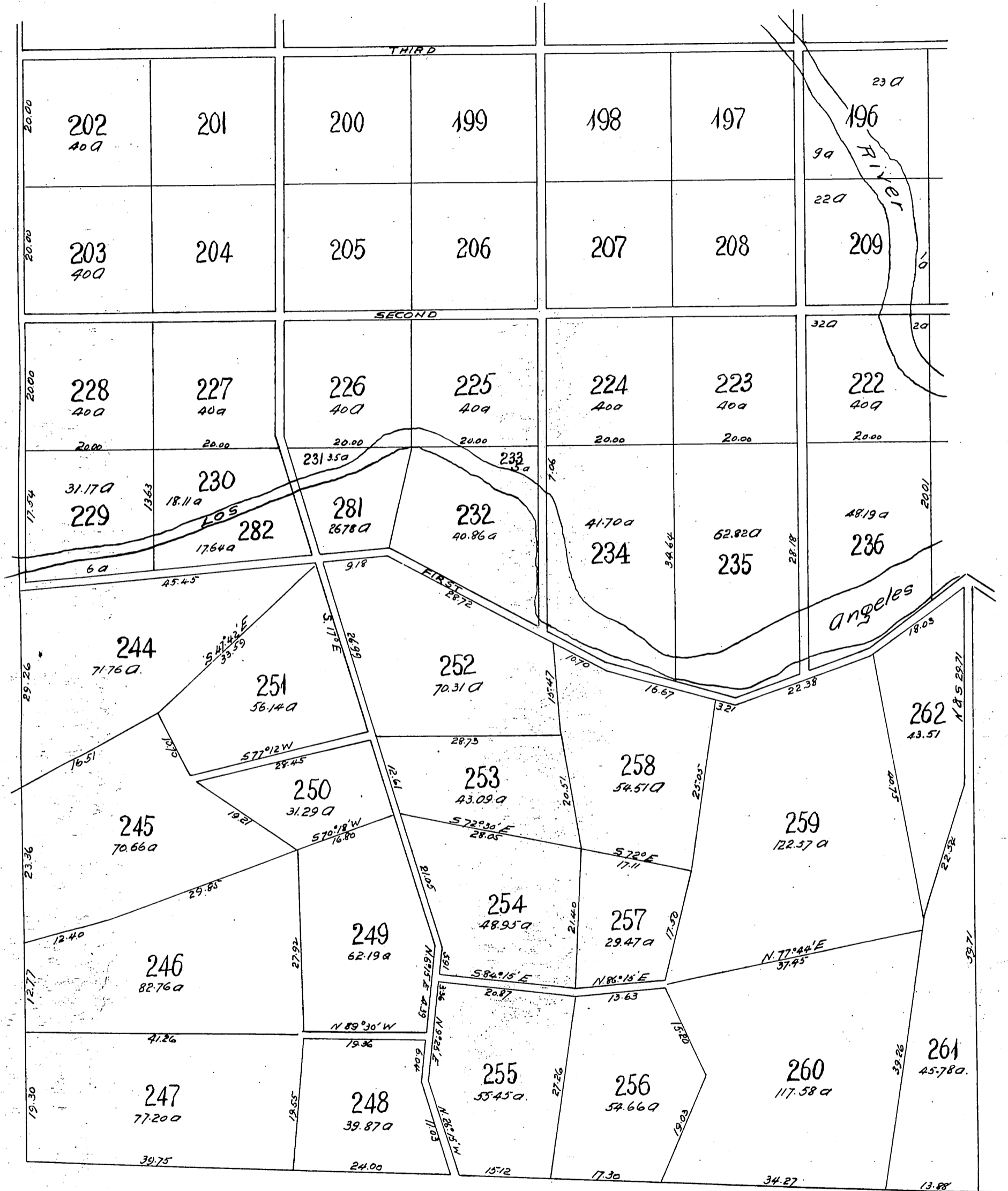
Scale 15 chains = 1 inch.

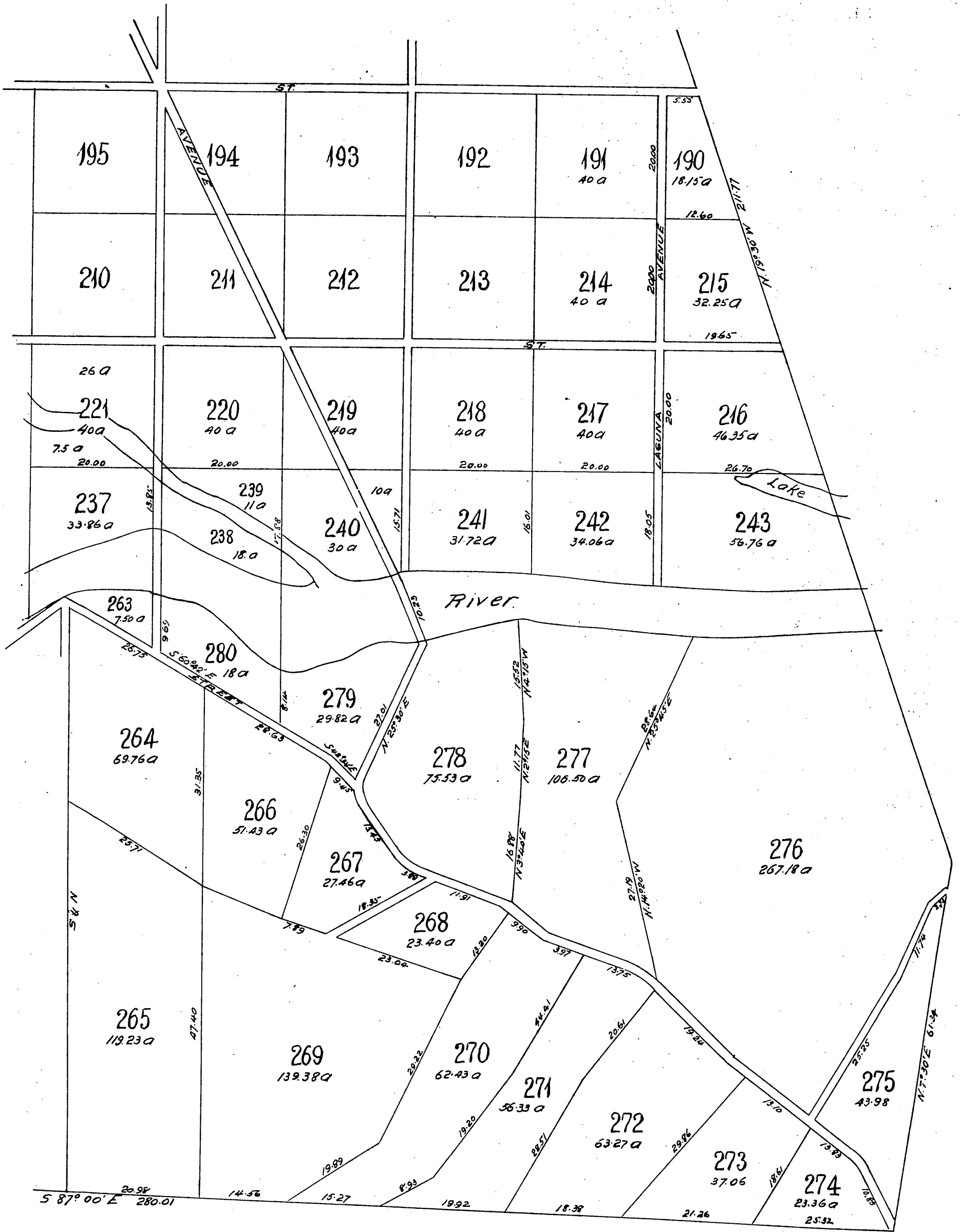
E & W 39.74				N. 89° 40' W	
12.44	9 24.880	8 24.880	7 24.700	6 24.520	5 24.290
	20.00	20.00	20.00	20.00	20.00
20.00	10 400	11 400	12 400	13 400	14 400
ELEVENTH					
20.00	28 400	27	26	25	24
				AVENUE	
20.00	29 400	30	31	32	33
TENTH					
20.00	48 400	47	46	45	44
20.00	49 400	50	51	52	53
NINTH					
20.00	68 400	67	66	65	64
20.00	69 400	70	71	72	73
AVENUE		AVENUE		SAN FERNANDO	











A full, true and correct copy of the original
 recorded May 25 1888 at 25 min. past 11 A.M.
 at request of Lankershim Land & Water Co
 Frank A. Gibson County Recorder.
 by George Kuyber, Deputy.