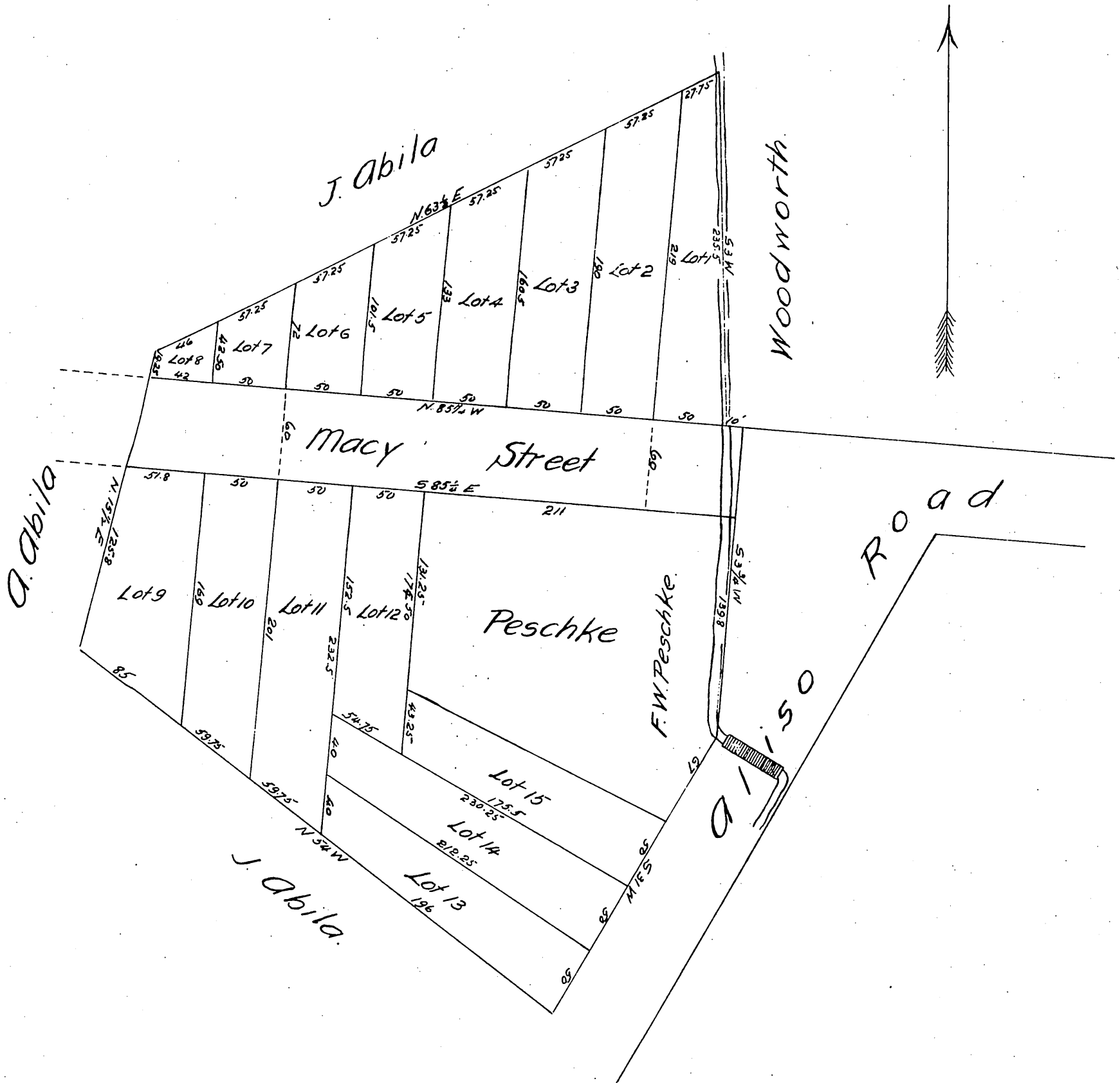


Map OF Peschke Tract

Subdivided in April 1875 by
L. Seebold and A Oldenburg

Scale 40 feet per inch. Magnetic Courses.
Var. 14° 45' East.



A full, true and correct copy of the original
(reduced to the scale of 80 feet to one inch)
recorded May 28, 1888 at 7 min. past 9 A.M.
at request of F.W. Peschke.

Frank A. Gibson. County Recorder.
by George Kuybee. Deputy.